

EXTERNAL EVALUATION REPORT
for Integrated Second Cycle Study Program Master of
Science in "Architecture" (5 years)
"Epoka University"

External Evaluation Team:

1. Dr. Gjergji Islami
2. PhD. Manuela Almeida



September/2018

Official

Nr.	Table of contents for the study program	
1	Applicant HEI:	EPOKA University
2	The faculty offering the study program	Faculty of Architecture and Engineering
3	License Order / DCM	DCM no. 281, dated 12.03.2008
4	Decision of Accreditation Council / First Accreditation Order	Order of the Minister of Education and Science no. 260, dated 07.06.2011, based on the Decision of the Accreditation Council no. 176, at 30.05.2011.
5	Decision of Accreditation Council / Order of MoES for re-organisation	Order of the Ministry of Education and Science, no. 517, dated 17.10.2011, based on the Decision of the Accreditation Council no. 250, at 16.09.2011
6	Title of study program:	Integrated Study Program Master of Science in "Architecture"
7	Cycle of study:	Second cycle (integrated)
8	Duration of the study program:	5 years
9	Total credits (ECTS):	300 ECTS
10	Form of study (full time / part time / distance education):	Full time
11	Language (Albanian / Other):	English
12	The program is provided by the institution	YES
13	The program is offered in cooperation with other institutions	NO
14	Joint / double degree	NO
15	Level in the National Qualifications Framework	7
16	Activating the study program	2008
17	Number of students	225

Note: The table will be fulfilled by the program officer of ASCAL

EXTERNAL EVALUATION REPORT
for Integrated Second Cycle Study Program Master of Science (ISPMSc) in
"Architecture"

Introduction

Epoka University began its activity during 2007-2008 Academic Year with the initial status of "Higher Education School" which was changed in 2012 in the status of "University.

The University is composed of three Faculties:

- Faculty of Architecture and Engineering
- Faculty of Economics and Administrative Science
- Faculty of Law and Social Sciences

The Faculty of Architecture and Engineering is composed of three departments:

- Department of Architecture
- Department of Civil Engineering
- Department of Computer Engineering

In 2017 the university has passed the institutional accredited from the Albanian Agency for Quality Assurance in Higher Education with validity from 20/10/2017 until 19/10/2021.

The programs in architecture were firstly offered in Epoka University in 2008 when a 4 years bachelor degree (240 ECTS) was approved and then opened. In 2011, in order to become compatible with the Bologna process, the program was reorganized in a 300 ECTS program with 5 years of integrated studies (PICD), concluding with a Master of Science degree.

Documents regarding the Master of Science (Integrated Second Cycle) study program in "Architecture":

First Licensing Document: DCM no. 281, dated 12.03.2008, as a Bachelor Program in "Architecture", with a duration of 4 years (Licenses for opening an academic activity, in accordance with the given license, according to UMAS No. 596, dated 23.12.2008)

Accreditation document of the Bachelor program in "Architecture" (4 years): is the Order of the Minister of Education and Science no. 260, dated 07.06.2011, based on the Decision of the Accreditation Council no. 176, dated 30.05.2011.

Reorganization document from the Bsc (4 year) program at the Integrated Msc: Order of the Ministry of Education and Science, no. 517, dated 17.10.2011, based on the Decision of the Accreditation Council no. 250, dated 16.09.2011.

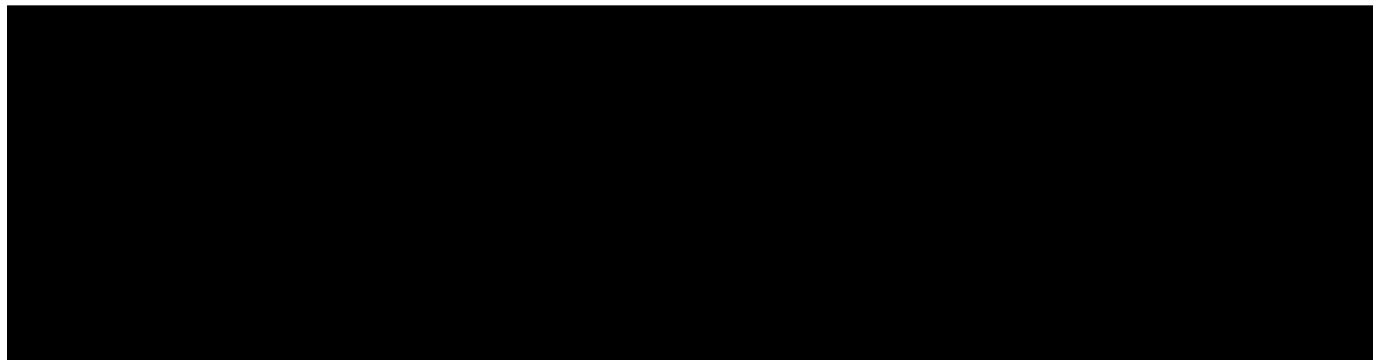
The 5-year study program is entering for the first time in the accreditation process.

In the last 10 years, the university in general and the Department of Architecture in particular have shown an overall progress by increasing the number of students and academic staff, establishing a campus with a qualitative infrastructure, and consolidating the academic reputation.

External Evaluation Team (EET)

Member of EET:

1. Dr. Gjergji Islami
2. PhD. Manuela Almeida



During the course of the procedure, EET was assisted by the ASCAL Technical Coordinator, Renata Qatipi.

On 28.08.2018, through the AMS system and with the official letter No. 91/37 Prot., dated 28.08.2018 with the subject "Notification of Submission of Draft External Evaluation Reports", EPOKA University, has been acquainted with the Draft Report on External Evaluation. On 04.09.2018, HEI transmitted through ASCAL AMS system comments regarding the Draft Report on External Evaluation, while they were officially sent by letter No. 261/28 Prot., dated 06.09.2018, "Submission of the comments on the Draft External Evaluation Reports".

The EEG after carefully reading the HEI's comments decided to take into consideration comment 1 and the final evaluation was changed from "Partially" to "Substantially", while comment 2 was not taken into consideration and the final evaluation does not change.

ANALYSIS OF FULFILLING THE RECOMMENDATIONS GIVEN BY THE ACCREDITATION COUNCIL IN THE DECISION OF THE FIRST ACCREDITATION (for BSc in Architecture-4 years)

I. Recommendations of the Accreditation Council:

- a) To better harmonize the implemented American system with the European one in the context of the Bologna Process
- b) To expand the Library with literature which is richer and has a greater number of copies
- c) To better encourage the individual work by students during the conduct of the teaching process by giving priority to specific hours of seminars, oral presentations, various essays, individual and team projects etc.
- d) To have a clearer specialization of academic personnel in certain areas in order to increase the level of teaching
- e) To better coordinate the duration of stay of visiting professors to not create teaching overload which creates difficulties for students

II. Analysis of fulfilling the recommendations:

- a) Recommendation is partially fulfilled. After the reorganization of the program, there have been changes resulting in improvement of the program activities to fit the Bologna process. Nevertheless, the university has to still review the ECTS system and the elective courses weight in the program structure.
- b) Recommendation is fulfilled. The Library collection has been enriched and constantly being updated.
- c) Recommendation is fulfilled. There is a noticeable effort encouraging the individual work of students, especially during studio hours that consists the base of the curricula of the program.
- d) Recommendation is partially fulfilled. There is a constant effort in raising the qualification of the academic staff and their specialisation. Still the problem of the academic staff teaching in many disciplines is a problem to be faced. At the same time, the reduction of workload for the full time academic staff could also influence this parameter.

- e) Recommendation is fulfilled. The university has eliminated the need for visiting professors by inviting local staff to contribute part time. This is an indirect way of resolving the recommendation, while the presence of visiting professors is considered as an important contribution to the program quality.

1. Mission/Goals of study program

Terms of reference: Goals and objectives of the study program, teaching and scientific research, short, mid- and long-term strategies, follow-up and adaptation of objectives and goals over the time, general data on the study program (history, status, number of employees over the years, number of students over the years, study programs for all cycles of study, position of the study program in the national and international context).

Description

Architectural education includes a complex and multidisciplinary formation where research and professional ability are inseparable. The Department of Architecture is offering a formation respecting the basic principles of architectural training in full compatibility with its mission and its development strategy.

See also introduction page for more info on the programs in architecture.

Evaluation according to Standards

Standards/Criterions	Evaluation according to standards
Standard I. 1 - Institution offers study programs in accordance with its mission and purpose.	
<p>Criterion 3 Study programs are designed in accordance with Institution purposes and mission;</p> <p>Criterion 4 Study programs are designed in accordance with labor market needs;</p> <p>Criterion 5 Study programs are designed in accordance with economic development of the country.</p> <p>Criterion 6 Study programs reflect the will of Institution to maintain nation values.</p>	<p>Architectural education is strongly related to the labour market needs as the construction industry and urban development are sectors that are in rapid development in Albania. The education of qualified professionals both in the theoretical and professional formation is an important contribution to the society and matching the mission of higher education institutions in general and Epoka University in particular.</p> <p>The program is designed to give a complex formation both relying on theoretical and professional aspects, integrating research to the applied architectural science.</p> <p>Architectural education in general is strongly related to the understanding, preserving and promoting the cultural context. Cities, urban and cultural environments, buildings, landscapes and all the forms of tangible or intangible heritage are subject of the education of architects who are culturally trained to identify and to preserve them.</p>
Standard I.2 - Study programs are consistent with institution's development strategy.	
<p>Criterion 1 Study programs are geared to institution's development strategy;</p>	<p>The institutional and department development strategies both promote the development of the quality</p>

	of teaching and research in the architectural field and the related programs.
Standard I.3 - Study programs are offered in accordance with laws and bylaws in force.	
<p>Criterion 1 The content of study programs is in accordance with criteria defined by laws and regulations in force;</p> <p>Criterion 2 Study program naming is consistent with qualifications level achieved and determined by Albanian Qualification Framework.</p>	<p>The program respects in its formal content the legal framework in force. Naming of the program is conform the qualification level referring to the Albanian Qualification Framework.</p> <p>New adaptations of the program are necessary referring to the latest legislative acts introduced during the last year.</p>
Standard I.11 - Institution drafts a development plan for study programs, teaching and learning results.	
<p>Criterion 1 Institution prepares a strategic plan in Institution level for the development and improvement of study programs;</p> <p>Criterion 2 Institution prepares a strategic plan in Institution level to improve teaching and learning results.</p>	<p>The university has drafted a strategic development plan for the period 2018-2020 following the approved plan for the period 2013-2017. The strategic plan is concerned both in improving the overall teaching and learning results and at the same time to strengthen and further develop the programs offered.</p> <p>The strategic plan of the Department of Architecture (2017-2022) is a specific document focusing on the development of architectural education and the Department itself as the base unit that offers the program.</p>
Conclusions of the evaluation:	
<p>The program is well-structured and in accordance with the mission and the development strategy of the institution and contributes to provide highly qualified professionals meeting the labour market demand and the overall national economic development.</p> <p>The standards: are fully met</p>	

2. Academic structure of the Faculty / Department (responsible for the study program)

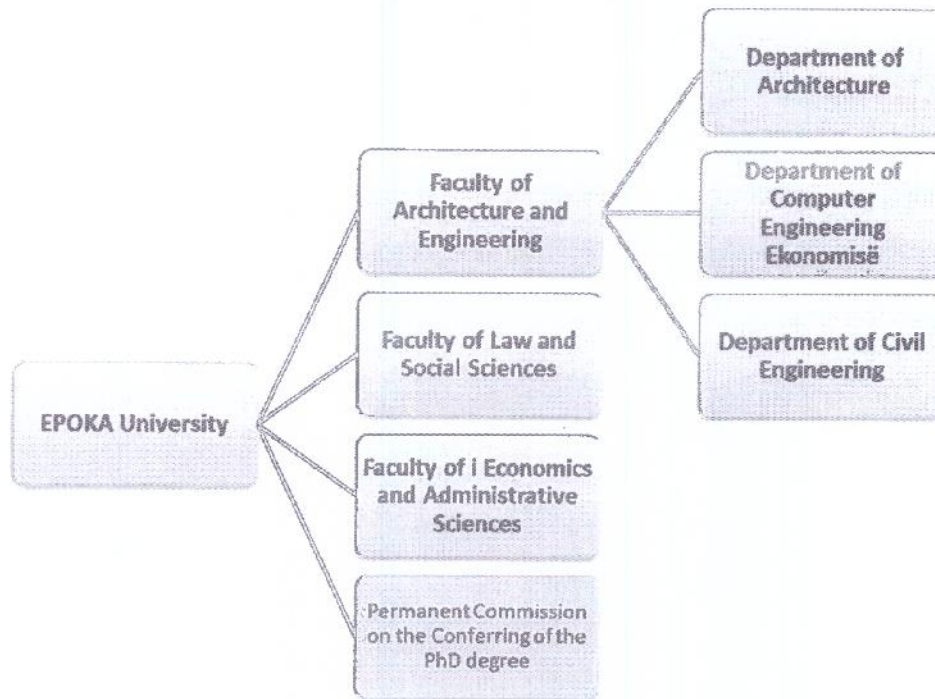
Description

Terms of Reference: *The Faculty's academic structure, division into departments, data for academic staff allocation in these core units, its division into Effective Academic Staff (EAS) (full time), Academic Staff with Contracts (ASC) (part time), Administrative Staff (AS), Coordinating teaching with other units.*

The Faculty of Architecture and Engineering is divided into three departments: Department of Architecture, Department of Civil Engineering, and Department of Computer Engineering. The total academic staff of the faculty is 23 full time personnel and 22 part time contributors (see detailed data below). There is also administrative staff composed of 4 members.

Measurable indicators:

- Academic structure of the University and Faculty of Architecture and Engineering (organogram)



The structure of the Faculty is organized in accordance to the Law 80/2015.

- The academic staff for each base unit: EAS, ASC, AS, Titles/degree qualifications (Table 1)

The Faculty is composed of 23 full time members of the academic staff. 16/23 members have a PhD or belong to the category Professor. In the Faculty of Architecture and Engineering there are also 22 part time contributors in the academic processes of which 12 have an academic Title or Scientific Degree.

- List of Effective Academic Staff (EAS) and Academic Staff with Contracts (ASC) in the Departments (fill in Tables 2)

The Department of Architecture has 9 full time members of which 4 have an academic Title or Scientific Degree.

The Dean of the Faculty belongs to the category Professor (Associated Professor).

The Head of the Department of Architecture has a Doctoral degree.

Two other full time staff members have a doctoral degree and belong to the category Lecturer.

All other members hold the position of Assistant Lecturer and they have a MSc degree.

The part time staff of the Department of Architecture is composed out of 8 members, 2 having a Doctoral degree.

- Scientific Council for Study Program / Coordinators of study program (Table 3)

The scientific committee of the program is headed by the Dean of the faculty and composed from 3 department members (one of them is automatically the head of the Department of Architecture). All members of the scientific committee have minimum a PhD.

Zygfryd Kuch

Relevant documentations (Tables of current staff at the moment of visit)

Evaluation according to Standards:

Standards/Criterions	Evaluation according to standards
Standard II.2 - Institution is organized in accordance with laws and bylaws in force, to accomplish its mission.	
<p>Criterion 1 Institution is organized in order to fulfill its mission;</p> <p>Criterion 2 Institution has at least two Faculties;</p> <p>Criterion 3 Faculty is organized in basic units. Each college has at least three basic units, from which two are departments;</p> <p>Criterion 4 Faculty or Institute of Research and Development consists of 3 basic units at least with well-defined objectives and mission;</p> <p>Criterion 5 Department should be composed of 7 effective members at least as academic staff, 3 of whom at least should have the scientific degree "Doctor."</p>	<p>Epoka University is organized in three Faculties composed of nine Departments (basic units) which cover the study programs and research activity in accordance with its mission.</p> <p>The Departments have a well-defined field of competence and offer study programs in accordance with their mission.</p> <p>The Faculty of Architecture and Engineering has three departments with respectively 9, 7 and 7 members of academic staff each (23 in total).</p> <p>In each department there are respectively 4, 5, 7 members of the academic staff that possess at least a PhD (16 in total).</p> <p>Referring to the information provided for the academic staff during the last 6 years, the Department of Architecture results to have a stable staff which has increased in qualification during the last years. From the actual full time staff, 5/9 are employed in the last six years with a full time contract and 2/9 have contributed for five years during the same period.</p> <p>The part time staff is more flexible but it still has a good stability and continuity.</p> <p>There is an effort to increase the number of qualified academic staff having an Academic Title or Degree.</p> <p>Still more efforts are needed to increase the presence of highly qualified staff.</p>
Standard II.3 - Institution units are engaged directly and devotedly for study programs implementation.	
<p>Criterion 1 Basic and main units are aware of responsibilities they have to realize the study programs;</p> <p>Criterion 2 Basic and main units are involved in necessary academic staff recruitment and evaluation process.</p>	<p>The programs offered in the Faculty of Architecture and Engineering is managed in the specific Departments and they are fully aware of the responsibilities they have.</p> <p>The staff recruitment starts from the Department which specifies the need for vacancies and then continues with an evaluation committee in the level of Faculty. After the evaluation, the procedure passes to the Rector office and to the Administrative Board.</p>

[Signature]

Conclusions of the evaluation:

The hierarchic structure of the university is in accordance with Law 80/2015. The structure of the Faculty of Architecture and Engineering has the needed number of academic staff with appropriate qualifications to operate and to manage the offered study programs.

The standards: are fully met

3. Academic staff and support staff, for the study program

Description

Terms of reference: Data for the qualification of academic staff, ratio of EAS / ASC; ratio of academic staff / administrative staff / student; needs for academic / administrative staff, distribution of workload for academic staff; relationships with other structures outside the time of employment; recruitment criteria of academic staff, etc.

The ISP (PICD) MSc in Architecture (5 years) is composed of 15 full time academic staff and 9 members of part time staff. The administrative personnel serving the program is composed of 4 members. The total number of students is 225, and the ratio between full time academic staff and students is 1/15.

The above data show a relatively good ratio between students and academic staff engaged in the program.

The recruitment policy aims in attracting highly qualified academicians with the objective of improving the overall quality of the staff. The teaching workload is considered as high with an average 14-17 hours/week.

Referring to the information provided for the academic staff of the program during the last 6 years, it results that the full time staff shows stability and an increase in qualification during the last years. The part time staff is more flexible but it still has a good stability and continuity.

There is an effort to increase the number of qualified academic staff having an Academic Title or Degree. Still more efforts are needed to increase the presence of highly qualified staff.

Measurable indicators:

- Data for the qualification of academic staff for the study program (Tables 4)

From Table 4 results:

Academic year 2012 -2013 the Rate EAS/ASC 3/0 (2 PhD/1 Msc)

Academic year 2013 -2014 the Rate EAS/ASC 3/0 (1 Prof.As/2 PhD)

Academic year 2014 -2015 the Rate EAS/ASC 7/3 (1 Prof.As/3 PhD/3 Msc)/(3 Msc)

Academic year 2015 -2016 the Rate EAS/ASC 5/3 (1 Prof.As/1 PhD/3 Msc)/(1 PhD/2 Msc)

Academic year 2016 -2017 the Rate EAS/ASC 6/5 (1 Prof.As/2 PhD/3 Msc)/(2 PhD/3 Msc)

Academic year 2017 -2018 the Rate EAS/ASC 15/9 (1 Prof.As/8 PhD/6 Msc)/(2 PhD/7 Msc)

There is an increase of the academic staff during the last 6 years that goes parallel with the increase of the number of students. On the other hand, the number of qualified academic staff holding an academic Degree or Title results to be constant (38-46%).

The academic staff related to the program, at the moment of evaluation consists of 15 full time members and 9 part time. 9/15 members of the full time academic staff have a PhD or a Professorship. 2/9 members of the part time academic staff have a PhD.

S. Dervishi

Summary of Staff Qualification and ratios among them (Table 5)

From Table 5 results that the qualified staff is:

Academic year 2012 -2013: Total 3	Category Professor	0	PhD	2 (66%)
Academic year 2013 -2014: Total 3	Category Professor	1	PhD	2 (66%)
Academic year 2014 -2015: Total 10	Category Professor	1	PhD	3 (33%)
Academic year 2015 -2016: Total 8	Category Professor	1	PhD	2 (25%)
Academic year 2016 -2017: Total 11	Category Professor	1	PhD	4 (36%)
Academic year 2017 -2018: Total 24	Category Professor	1	PhD	10 (42%)

As shown from the data above, the number of PhD has been increasing parallel to the number of the staff, while the number of professor remains constant.

More efforts must be made to increase the number of Professors within the program.

Actually, 6/15 members of the full time academic staff and 1/9 of the part time staff are in the process of completing their PhD. There is one member of the full time academic staff that belongs to the category professor (S. Dervishi – Assoc. Professor).

Data by age (Tables 6)

The full time staff consists of young academics under the age of 45 which guarantees a positive trend in the coming years according to expected qualifications.

Contracts of work, duties and rights

The full time contract duration is one year, while the part time one is one semester. Longer contracts for full time staff members would be recommended in order to guarantee consolidated staff which is devoted to the institutional development.

The duties and rights of the academic staff are specified in the contract and are in accordance with the legislative framework.

Evaluation according to Standards:

Standards/Criterions	Evaluation according to standards
Standard II.1 - Academic, assisting teaching-scientific and administrative staff are engaged to fulfil study programs objectives.	
<p>Criterion 1 The academic, assisting teaching-scientific and administrative staff are engaged to fulfil objectives of study programs and to achieve them;</p> <p>Criterion 2 Academic, assisting teaching-scientific and administrative staff of Institution are engaged in accordance with institution development strategy.</p>	<p>From the site visit, through contacts with staff and students can be noticed that the members of the academic and administrative staff are engaged in accordance with the needs of the program. They have well defined duties and make good efforts in contributing to the program.</p> <p>The university development strategy refers to staff engagement as one of the key elements for the future development of the institution.</p>
Standard II.4 - Academic staff is engaged in designing and implementing institution	

[Signature]

development policies.	
<p>Criterion 1 Academic staff plays a key role in curriculum drafting and institutional decisions that belong to organization of study programs;</p> <p>Criterion 2 Recruitment of new staff and allocation of teaching load is made in accordance with laws and bylaws in force.</p>	<p>Curricula are drafted in Department base where the full time academic staff is proposing the structure and content of the program.</p> <p>The recruitment of staff follows a step by step procedure that starts from the department. The recruitment and load allocation is considering the legal framework. The class activity load of the full time staff is considered to be relatively high ranging from 14 to 17 hours per week. A lower teaching load would assure more qualitative teaching and research product.</p>
Standard III.1 - Institution follows legal and transparent procedures for personnel recruitment and evaluation.	
<p>Criterion 1 Institution follows legal and transparent proceedings for personnel recruitment in accordance with the statute and regulation;</p> <p>Criterion 2 Academic staff employed with fulltime in second cycle study programs and second cycle integrated study programs comprises at least 70% of academic staff engaged in implementation of respective study programs;</p> <p>Criterion 3 Institution follows legal and transparent procedures for personnel assessment;</p> <p>Criterion 4 Institution maintains a database of personnel recruitment reports, of announcements for jobs, etc..</p>	<p>The recruitment procedure is followed by the human resources office. The process starts in the Department, and the selection is made by a commission of three academic members mandated from the Dean. Candidates are evaluated for the documentation presented, interviewed by the commission and they are also required to make a demo lecture if needed. The Rector and then the Administrative Board give the final approval.</p> <p>The full time academic staff covers more than 70% of the total load of the program.</p> <p>The full time academic staff covers more than 70% of the total load of the program. Based on Tables 11 and 14 (in the Annex), 72% of the total load of the program (216 credits) is covered by effective staff and 28% of the total load of the program (84 credits) are covered by contract staff. .</p> <p>The institution keeps records in the Faculty and in the human resources office about the procedures taken from the publication of the vacancies till the final recruitment of staff.</p> <p>The staff after recruitment is then evaluated in the Department and Faculty base and also through the student questionnaire.</p>
Standard III.2 - Academic staff (with scientific degrees and academic titles) covers the Institution needs and have clearly defined responsibilities.	
<p>Criterion 1 Program Manager has at least the title "Associate Professor" or the scientific degree "Doctor" ("PHD") awarded in western universities and academic experience in these universities;</p> <p>Criterion 2 The head of course / module in study programs "Master of Science" has at least the scientific degree "Doctor";</p> <p>Criterion 3 The head and teachers of subject / module in study programs</p>	<p>The head of the Department of architecture holds a PhD and fulfils the needed requirements for the position held.</p> <p>The head of the courses in the 4th and 5th year of the PICD belong all minimally to the category Lecturer and hold a PhD.</p> <p>The leading authorities in the university including the Faculty of Architecture and Engineering and the Department of Architecture result to be employed</p>

Handwritten signature

Handwritten signature

<p>"Professional Master" have at least the scientific degree "Doctor" or, diploma "Professional Master" or "Master Science" and a professional experience of at least 5 years in the profession in which this study program is offered;</p> <p>Criterion 4 Rector, Deputy Rector, director and deputy director of interuniversity center, Dean, Vice Dean, Director, Head of department, service supervisor, program supervisor are employed with full time in the institution offering the study program;</p> <p>Criterion 5 Institution provides sufficient personnel for guidance and supervision of professional practices.</p>	<p>full time in Epoka University.</p> <p>The professional practice (Summer Practice at Construction Site) is monitored by the Department of Architecture that has the sufficient capacities for the supervision. Although it is an independent work with 0 ECTS, it is a compulsory activity and the students prepare a working Diary which is then evaluated by the Department.</p>
<p>Standard III.5 - Students who attend study programs of the second cycle "Master of Science" or integrated study programs of second cycle have a supervisor for the thesis.</p>	
<p>Criterion 1 Students who attend these study programs have a supervisor for the research work and thesis they prepare for diploma issue at the completion of this cycle of studies;</p> <p>Criterion 2 Supervisor has at least the scientific degree "Doctor";</p> <p>Criterion 3 Supervisor supervises no more than 5 (five) students simultaneously for themes of applied research character (such as those offered in study programs in the fields of natural sciences, medical science, etc..) and no more than 10 (ten) students simultaneously for themes offered in study programs in fields of social and human sciences.</p>	<p>All students that graduate have a thesis supervisor for their graduation project / research. Supervisors assigned for the thesis work as minimum have a PhD.</p> <p>From the data collected in the Department results that staff members supervise a maximum of 5 students for the thesis work.</p> <p>The supervisor qualification and their load seem to be normal and provide qualitative conditions for thesis development and research.</p>
<p>Standard III.6 - Study-research field in which the supervisor is specialized is consistent with the study field in which the study program is provided and thesis is foreseen to be prepared.</p>	
<p>Criterion 1 Study-research field in which the supervisor is specialized is consistent with the study field in which the study program is provided.</p> <p>Criterion 2 Supervisor has advanced theoretical knowledge and specific research skills in the area in which the study program is provided and in which thesis is anticipated to be drafted.</p>	<p>Considering that supervisors are department members, their specialisation matches the objectives of the program.</p> <p>All supervisors cover fields related to architectural studies deriving from their PhD studies or from their current research work.</p>
<p>Standard III.7 - Institution engages supporting teaching-scientific and administration staff to fulfil its mission.</p>	
<p>Criterion 1 Institution demonstrates an optimal commitment of supporting teaching-research staff for the realization of laboratory classes and maintenance of laboratories and school facilities;</p> <p>Criterion 2 Institution demonstrates an optimal use of human resources for meeting</p>	<p>There is a balance between teaching and research which is evident in the documentation presented. The facilities and laboratories are well maintained and efficient for the program.</p> <p>The academic staff members are fully engaged to</p>

objectives of study programs of second cycle.	fulfil the objectives of the program.
Standard III.8 - Academic staff carries out the teaching load defined in laws and bylaws in force.	
<p>Criterion 1 Academic staff realizes teaching load as defined in laws and regulations in force;</p> <p>Criterion 2 Teaching load carried out by academic staff in study programs of second cycle and integrated study programs of second cycle and their organization and management are evaluated in teaching classes.</p>	<p>The actual load is calculated in accordance to the Directive on the Teaching Load of the University dated 07.10.2016. According to this document, the weekly load allowed is maximally 16-20 hours. The real teaching load for department members varies in a range from 440 to 550 hours/year. This numbers include only the class activity such as lectures, seminars etc.</p> <p>A decrease in the total teaching load would be considered a positive contribution for the overall performance of academic staff both in teaching and especially in research.</p>
Standard III.9 - Institution has a database for its personnel.	
<p>Criterion 1 Institution has a detailed database for its academic staff members involved in the program and the person responsible for organizing the study program;</p> <p>Criterion 2 Institution possesses a complete list of teaching- scientific support staff, academic and administrative staff for each semester;</p> <p>Criterion 3 Institution defines and publishes criteria and procedures for staff recruitment.</p>	<p>The human resources office holds a detailed database of the staff member contributing for each program, those being academic or administrative, full time or part time. The HR office holds a separate folder for each of the above.</p> <p>The vacancies and the specific criteria are published in the university web page: http://www.epoka.edu.al/news-and-announcements.html</p>
Conclusions of the evaluation:	
<p>The academic staff of the program is well composed and qualified for the specific program in architecture. There is need for further improvement of the staff qualification in order to assure more candidates from the category Lecturer and Professor. The recruitment procedures aim to select well qualified staff. The young age of the academic staff is promising for further consolidation and qualification.</p> <p>The standards: are substantially met</p> <p>Recommendations:</p> <p>More efforts must be made to increase the number of Professors within the program.</p> <p>A lower teaching load would assure more qualitative teaching and research product.</p>	

4. Facilities for the study program, logistics and other services to the community

Description

Terms of reference: logistics resources and other services delivered on behalf of community Facilities, infrastructure, information technology, libraries, other services for students, residence halls.

Epoka University has a campus based infrastructure which is very well structured and equipped. The campus is planned for further extension of the university and it is well organized. The university infrastructure and services offered satisfy all the needs of a program in Architecture and create facilities for the students. For the moment there is no in-campus residences.

Measurable indicators:

- Faculty facilities (data at the Table 7)

Referring to the data in Table 7, the Faculty of Architecture and Engineering has 40.2 m² area per student and 23.7 m² area per member of the staff. This is a very good overall indicator of the available physical infrastructure for the study programs within the Faculty. At the same time, the infrastructure includes all the necessary spaces for the normal activity of the study program.

- Relevant documentation (plans) in the Annexes

Evaluation according to Standards:

Standards/Criteria	Evaluation according to standards
Standard II.5 - Institution provides the necessary infrastructure for implementation of second cycle study programs and integrated study programs of second cycle that it offers.	
<p>Criterion 1 Institution has a permanent location, which means central administrative premises and facilities where teaching activity is conducted;</p> <p>Criterion 2 These facilities are available to Institution for no less than 6 years;</p> <p>Criterion 3 If the study program is offered in more than one building, institution provides efficient management and continuous control for achievement of standards and implementation of educational policies designed for realization of study programs that it offers;</p> <p>Criterion 4 Institution provides sufficient capacities and facilities for implementation of professional practices foreseen for realization of study programs in the fields of health, veterinary, agriculture, technical sciences etc.</p>	<p>Epoka University has its own campus, near Mother Teresa Airport in Tirana. The campus is composed by several buildings offering the infrastructure needed for the normal operation of the program.</p> <p>The university is the owner of the buildings and terrain. The masterplan for the future development of the campus includes several new buildings to be built in order to support the enlargement of the university and to provide more services within the campus.</p> <p>Even though the students use different buildings for different courses and activities, this doesn't affect the activity. The campus is well structured to allow a functional layout and efficient management of the activities.</p> <p>The laboratories, studios and the actual infrastructure allow the normal proceeding of the curricular activity by allowing students to achieve practical skills. Other laboratories could be created to further improve the infrastructure related to the formation in architecture such as model making lab, 3d printers, survey lab, environmental physics lab etc. Some of this infrastructure could have a dual impact both in the curricula and research.</p>
Standard V. 1 - Institution makes its library available to students.	

<p>Criterion 1 Institution provides quality textbooks and sufficient auxiliary and modern literature;</p> <p>Criterion 2 The library has sufficient literature that helps the student to conduct successfully the study program, the scientific research project and thesis;</p> <p>Criterion 3 The library has periodicals and electronic library, which contain necessary books or journals to conduct successfully the study program, the scientific research project and thesis;</p> <p>Criterion 4 Program managers have drawn up a detailed plan to increase library items in support of study program, scientific research project and thesis preparation by students, including the budget planned for this purpose;</p> <p>Criterion 5 Library has service hours in accordance with timetable of study programs and needs of students.</p>	<p>The library is well equipped with textbooks and literature related to the program. Such literature is available in hard copy or electronic form, which facilitates the use of the material from the students.</p> <p>A record of the thesis of the students and the list of the research work of the department members are available online and easily accessible.</p> <p>The library offers good sources for research and provides also access in online libraries that could help students for their thesis but also the academic staff for their research.</p> <p>The library fund is updated periodically with new entries ordered from the departments to serve the specific programs they offer. Although a detailed plan to increase library items is missing, the basic literature and sources to access it are present and get updated on a regular base.</p> <p>The Library offers daily service from Monday to Friday from 8.00 to 17.30 and on Saturday 9.00-13.00. Considering the Library also as a studying environment, longer operation hours would be helpful to students, especially during the examination period.</p>
--	--

[Handwritten signature]

Standard V. 2 - Institution makes available to students sufficient labs and appropriate learning facilities.

<p>Criterion 1 Institution indicates that it has adequate number of: labs, classrooms, offices, studios and other facilities with electronic equipment and information technology to carry out the study programs;</p> <p>Criterion 2 Equipment of teaching facilities is suitable for teaching in accordance with program objectives;</p> <p>Criterion 3 Laboratories contain necessary equipment and tools to meet requirements of study programs and to conduct practices provided for by study program in accordance with program goals, and are maintained and improved continuously;</p> <p>Criterion 4 depending on offered study programs, institution has at least a laboratory for each group of lectures which foresee laboratory practices.</p>	<p>The university offers sufficient number of classes, studios, offices, exhibition spaces which are of a very good quality and well equipped for the activities they cover. Electronic equipment such as computers, projectors, smart boards etc. are available and fully functional and accessible both from staff and students. Laboratories cover the basics needs of the program.</p> <p>The computer labs, design studios and the civil engineering lab offer a good base for supporting the program. Considering the particular nature of the program in architecture, further practical knowledge is obtained in construction site visits and in internships.</p> <p>Other laboratories could be created to further improve the infrastructure related to the formation in architecture such as drawing lab, model making lab, 3d printers, survey lab, environmental physics lab etc. Some of this infrastructure could have a dual impact both in the curricula and research.</p>
---	---

Conclusions of the evaluation:

The infrastructure is one of the strongest assets of Epoka University, offering a well-organized campus, with a qualitative environment for the academic activity. The infrastructure serving the formation in architecture is well organized, with several design studios that offer very good conditions. Exhibition spaces are also available. The Library is well equipped with the literature needed and with a comfortable studying environment. The Laboratories offer the basics needed for the program but could be enriched to offer

[Handwritten signature]

some more facilities to the students of architecture.

The standards: are fully met

Agreed

5. Financing and managing financial resources

Description

Terms of reference: funding sources, costs, student cost, financial control, management capacities.

Epoka University is part of Turgut Ozal sha. Its main funding sources derive from the tuition fees that cover almost all the costs. Students cost are considered as relatively high for the average Albanian family income. Turgut Ozal sha has a management and audit system that controls the financial situation.

Measurable indicators:

- Financial resources, data over the five years (Table 8)

The total income of the University has almost doubled according to 5 years ago. The main income source is the tuition fees paid by the students. During the last three years there is also funding related to research, contracts and commercial activity that in the last year account 8% of the total income.

Other forms of financing such as continuous education and consulting services, are still to be considered as a future possible income for the university.

The programs of the Department of Architecture generate about 24% of the total income referring to the last year, and have a progressive increase during the past 5 years.

- Costs (in the past 5 years), according to financing resources, in percentage (Table 9)

The most significant amount spent in the university goes for salaries (about 50%) and the rest refer to expenditures (about 40%) and investments (less than 10%). The profit of the university in the last year results to be around 121 000 000 ALL or about 27% of the total income.

- Cost/per student (for 1 academic year)

In the data given there is no exact calculated cost presented. According to the income and number of students, an approximate yearly cost for 1 student results to be around 380 000 ALL per year.

- Transparency, internal financial audit Report and its results

There is an annual external audit for Turgut Ozal sha.

- Financial management capacity

Epoka University is part of Turgut Ozal sha and has a financial management in university level and also in the General Directorate of the Turgut Ozal sha.

- Relevant documents (Annex)

N/A

[Signature]

Evaluation according to Standards:

Standards/Criterions	Evaluation according to standards
Standard II.9 - Institution makes an annual (external and/or internal) audit about the financial situation.	
<p>Criterion 1 Audit report presents the entire financial situation for the use of budget made available to implement second cycle study programs and second cycle integrated study programs;</p> <p>Criterion 2 Audit report contains a clear picture of received foreign grants, and related services contracts for implementation of second cycle study programs and second cycle integrated study programs;</p> <p>Criterion 3 Audit report analyzes the use efficiency of revenues from students' fees in order to increase the quality of studies in this cycle of studies.</p>	<p>The annual external audit of Turgut Ozal sha is dealing with the general financial data of the institution.</p> <p>The audit presents the overall picture that should be further analysed in detail to get data on second cycle programs and on the particular program in architecture.</p>
Standard VI.1 - Institution drafts a financial report on costs of study programs.	
<p>Criterion 1 Institution drafts a report that contains detailed financial data on costs for implementation of study programs, as operational costs, fixed costs of facilities and equipment, etc.;</p> <p>Criterion 2 Institution shows that it has a financial sustainability during conduct of study programs and it has sufficient financial capacities to improve the financial situation and generation of revenues in the future.</p>	<p>A report is prepared from the Turgut Ozal sha, containing detailed data regarding finances. There is need for a further analysis of these data in the university in order to be able to figure out specific cost related issues for every single program.</p> <p>Judging on the data provided, Epoka University has a positive rapid growth in income and a stable financial base.</p>
<p>Conclusions of the evaluation:</p> <p>The university presents a stable financial situation with positive growth over the last years. There is still need to analyse costs and financial data for single study programs in order to be able to control costs and probably to reduce the percentage of the income covered by the tuitions. The university has the possibility to explore also other forms of income by continuous education and consulting services.</p> <p>The standards: are fully met</p>	

Agenda

6. Internal Quality Assurance System (IQAS)

Description

Terms of reference: Institutionalizing of internal quality assurance system, Internal Quality Assurance Unit (IQAU), its functioning, self-evaluation and on-going upgrading of quality, outcomes of external evaluation.

Epoka University has an established Internal Quality Assurance System. The Permanent Commission of Quality Assurance is responsible about the Quality Assurance Policies and it is supported by the Internal Quality Assurance Office. The Commission is holding periodical meetings and is addressing the quality related issues. Both structures are dealing with the semestral evaluations of the academic staff and with the results of external evaluation.

[Signature]

Measurable indicators:

- Database for members of IQAU (Table 10)

The Permanent Commission of Quality Assurance (PCQA) is composed of 11 members from whom, 1 external member, 1 alumni, 1 representative of the student's council and representatives from different faculties. This unit has been reorganized in December 2017 from the former Academic Evaluation and Quality Improvement Board (AEQIB). 5 of the members of the PCQA keep holding their position from the former AEQIB. The composition of PCQA is representing at its best all the main actors related to the academic quality in Epoka University.

- Quantitative data for IQAU, as:

- o How many surveys are made with students?
- o How many students were surveyed?
- o How many surveys are processed, and what problems are issued?
- o What have been the next steps?
- o etc.

All the students complete the course instructor evaluation form online. The student cannot access the exam evaluation online prior to completing the questionnaire. Practically some of the students complete the questionnaire after the exam, and the evaluation could derive from, or could influence, the difficulty of the exam.

There is no other periodical surveys with the students being applied at the moment.

All the surveys regarding instructor evaluation are processed electronically and reports and rankings of courses are prepared and are delivered to the Rector's office. There are no evidences of proper measures taken directly related to the result of surveys from the university structures.

- Internal quality control

The quality assurance structures are taking care also of the evaluation of the examination results.

Other quality control issues related to teaching and specific programs are part of the daily work of the Faculties and Departments.

- Responsibilities in monitoring and quality management, until the department level

Although dealing with quality is a routine work of the Dean and Head of the Department, there is no operational model or methodology for the Quality Assurance within the specific Program or Department.

- Self-assessments conducted, and their results

Internal evaluation reports for each program are part of the self-assessment in Department level.

- Quality improvement policies, on the basis of periodic self-assessment

The drafting of institutional and department strategies are based on the overall picture created by the self-assessment and the external periodical assessments. Trainings are also used to



communicate with the academic staff and to raise the overall quality assurance culture within the university.

It would be also important to make questionnaires to the teaching staff involved in the program. It is important to also have the perspective from the teachers' side and not only from the student's side. It also should be asked to the teaching staff suggestions/measures to improve the quality, based on their experience and point of view. A yearly based discussion should be promoted among the academic staff.

[Handwritten signature]

The results of the audit and external assessment


The results of the external assessment are an important part of the overall quality evaluation and are evaluated by the PCQA. Action plans (apart from strategies) would be an efficient tool to achieve proper results in the quality improvement.

Relevant documentations (Annex)

Evaluation according to Standards:

Standards/Criterions	Evaluation according to standards
Standard I.10 - Institution uses evaluation methodologies, measuring and evaluation instruments for the progress of study programs.	
<p>Criterion 1 Institution uses evaluation methodologies, measuring and evaluation instruments for the progress of study programs;</p> <p>Criterion 2 Institution includes this piece of information in the self assessment it makes in order to achieve the internal quality assurance;</p> <p>Criterion 3 Institution publishes the assessment results and results it aims to achieve;</p> <p>Criterion 4 In order to conduct the assessment, Institution uses indirect or direct methods:</p> <p>Indirect:</p> <ul style="list-style-type: none"> a. Survey: for students who follow study programs, for graduates in these programs in previous academic years or in different cycles of study; b. Surveys assessing didactics, curriculum, learning; c. Conceptual question; d. Interviews; e. etc. <p>Direct:</p> <ul style="list-style-type: none"> a. Outcomes achieved by students in standardized national/international tests (e.g. State exam for regulated professions); b. Hearings in auditorium; c. Outcomes achieved by students in exams assessed with grades / points; 	<p>The annual analysis of the academic activity aims to control and evaluate the progress of the program.</p> <p>Statistical data provided from the student results are also prepared periodically.</p> <p>The info derived from the annual analysis and the exam results serves to prepare the Institutional self-evaluation report prior to each institutional reaccreditation.</p> <p>The internal evaluation reports prepared by the university are published online in: http://aeqi.epoka.edu.al/home-internal-evaluation-reports-1479-1480.html</p> <p>Assessments are done through:</p> <p>Indirect methods such as surveys for course and instructor evaluation.</p> <p>Direct methods such as evaluation of the semestral results in a qualitative and quantitative analysis.</p>

[Handwritten signature]

<p>d. Outcomes achieved by students in preliminary and final tests, examinations for modules, professional practices;</p> <p>e. Outcomes achieved by students in assessment of tasks performed during the study program conduct (course assignments for analyzing conceptual understanding, presentations, exams, etc.);</p> <p>f. Observations in performance of exercises / practice;</p> <p>g. Outcomes achieved and quality of research result - thesis;</p> <p>h. Etc.</p>	
<p>Standard I.13 - Institution publishes regularly unbiased, objective, qualitative and quantitative information for internal evaluation.</p>	
<p>Criterion 1 Institution publishes regularly brochures, newsletters, etc., designed and published by Institution for internal evaluation;</p> <p>Criterion 2 Institution posts regularly video audio presentations, etc., on the website for internal evaluation.</p>	<p>The internal evaluation reports are available at the web site of the university.</p> <p>http://aeqi.epoka.edu.al/home-internal-evaluation-reports-1479-1480.html</p> <p>Other activities related to quality assurance are available at the Internal Quality Assurance Office web page.</p> <p>http://aeqi.epoka.edu.al/home.html</p>
<p>Standard II.7 - Institution conducts an annual analysis to assess second cycle study programs and second cycle integrated programs.</p>	
<p>Criterion 1 Institution makes an annual analysis to assess the progress of second cycle study programs and second cycle integrated study programs;</p> <p>Criterion 2 Institution develops policies aimed at improving second cycle study programs and second cycle integrated study programs;</p>	<p>The annual analysis of the academic activity aims to control and evaluate the progress of the program. This is a department based document that includes the annual overview of the programs offered from the specific department, including the second cycle programs.</p> <p>The policies aimed at improving second cycle programs are part of the Department development strategy 2017-2022.</p> <p>http://arch.epoka.edu.al/cat-strategic-plan-2017-2022-1888.html</p>
<p>VIII - INSTITUTION GUARANTEES QUALITY ASSURANCE</p>	
<p>Standard VIII.1 - Institution guarantees quality assurance in realization of study programs.</p>	
<p>Criterion 1 Institution has met institutional standards and is accredited in institutional level before applying for accreditation of study programs;</p> <p>Criterion 2 Institution uses appropriate instruments for quality assurance;</p> <p>Criterion 3 Institution establishes a policy and follows certain procedures for quality assurance and standards of their programs;</p> <p>Criterion 4 Institution uses formal mechanisms for</p>	<p>Epoka University has been reaccredited in 2017 and has fulfilled the institutional standards required.</p> <p>The university has created a quality assurance system that is efficient in university scale and dealing with the overall policies. The efficiency of such system could be improved by creating a department based quality control that would create a specific</p>



<p>periodic reviewing, approving and supervision of study programs;</p> <p>Criterion 5 Institution aims at raising awareness of its staff and students, who pursue offered study programs, for quality importance and quality assurance in them;</p> <p>Criterion 6 Institution designs and implements a strategy for constant quality improving. Strategy, policy and procedures are published.</p>	<p>methodology related to the specific programs and disciplines.</p> <p>The approving and supervision of the program passes in several steps starting from the department and ending with the university senate.</p> <p>Several trainings and activities organized by the PCQA have been subject of spreading the quality culture in the university.</p> <p>The overall Institutional Development Strategy covers also the need for continuous quality improvement. Nevertheless, a specific document addressed to quality assurance could be more effective and detailed.</p>
<p>Conclusions of the evaluation:</p> <p>The University has an active and efficient quality system. The improvement of this system could take into consideration the creation of a department based quality unit, action plans related to quality indicators, and a specific strategic document dedicated to quality assurance.</p> <p>The standards: are fully met</p>	

STUDENT EDUCATION POLICIES

7. Mission and objectives of Study Program, its organisation

Description

Terms of reference: Mission, goals and objectives of teaching process and scientific research, the short-term, medium-term and long-term strategies, following up and aligning the objectives and aims with timelines, overall data on HE, general information about the HEI (history, status, number of employees over the years, the number of students over the years, programs of study for all study cycles, HEI place in the national and international).

The 5 years program in architecture offers a curricular format similar to most schools of architecture worldwide that believe in the particular needs and formation components for an architect. The mission and objectives of the program focus on creating a qualitative formation with both professional and scientific knowledge. The design studio is the main learning method where research, debate, practice, theory and experiments meet together to stimulate the architectural design experience as a multidisciplinary approach. The program has evolved gradually by getting consolidated in infrastructure, academic staff, management capacities, quality of students etc.

Measurable indicators:

- Beginning year, goals and objectives of the study program

The Integrated second cycle study program in Architecture is a five-year study with emphasis on architectural design studios. The curriculum is design-centered and the program prepares students for highly qualified professional responsibilities. The program is divided into three levels: foundation course (first year), intermediate level (second and third year) and degree level



(fourth and fifth year). The Integrated program includes 46 courses (3 main modules which are valid in the degree level respectively fourth and fifth year) including professional internships and the master's thesis. The curriculum of the program is carefully designed to properly balance different educational activities. 18.6 % of the activities are about the general formation discipline (courses classified as "A" courses), 10 % of the program consists of the preparation of the diploma thesis; while 46.3% consists of activities in the characterizing discipline of the study. About 12% of activities are in elective disciplines, and the rest relate to integrative and other formation of knowledge.

The division of the activities enables the student to get an integrated formation which is fitting to the objectives of the program. The presence of the elective courses makes the program flexible to adapt to the needs and preferences of the student. Although this creates flexibility, the number of elective courses and courses inserted in the three design fields (profiles) is considered relatively high.

Organization of the study program (years, semesters, weeks, etc.)

- 1 academic year has 30 teaching weeks in auditorium + 2 week of exams
- 1 Semester has 15 teaching weeks in auditorium + 1 week of exams
- 1 ECTS has 25 hours of overall student's work
- 1 teaching hour has 60 minutes

Title of Diploma

Master of Science (MSc) in Architecture

The curriculum of the study program (according to the model of table 11)

The curriculum is organized in 5 years (10 semesters) with 60 ECTS each. The content of the curriculum is organized according to the experience of many architectural schools in Europe and USA, where the main subject is the architectural design studio, a workshop where students learn and practice by confronting complex design problems.

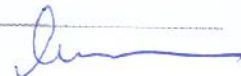
The 4th and 5th year, offer a base curricula specialised in three main directions (design fields): Architecture Design, Building Technology and Urban Planning. Although these are not classified as Profiles and are not mentioned in the Diploma, the specialisation gained gives also different professional orientation. Although these are three offered options, they are not running parallel, and the department is deciding which one to offer on every academic year.

The method of determining of credits (ECTS) for forms of study:

The data below is filled from an analysis of the data offered in Table 11. The university does not have standard conversion rates for determining the meaning of 1 ECTS for each type of activity.

For example, 1 ECTS of lectures = 18 hours in auditorium for some courses and 6.4 for others. Seminars vary from 7.8 to 16 hours per 1 ECTS. A constant factor would help in having a more standardised understanding of the curricula.

- **Lectures** 6.4-18 hours in the auditorium and 18.4-7 hours of independent student's work
- **Seminars** 7.8-16 hours in the auditorium and 17.2-9 hours of independent student's work
- **Laboratories** 8.9 hours in the auditorium and 16.1 hours of independent student's work
- **Professional Practice** 0 hours in the auditorium and 25 hours of independent student work
- **Master Thesis** 0 hours in the auditorium and 25 hours of independent student work



The above data derive from the adaptation of the previous 4 years program (based on the American system) in the 5 years program built in ECTS in accordance with the local legislation.

According to Professional Practice and Master Thesis, the ratio of class hours to the independent work has to be reconsidered. The master students, as discussed in the site visit, have a review process and a supervision work which is not appearing in the hours indicated in Table 11. At the same time, the presentation of Professional Practice and the academic control of the process require a minimum amount of hours that should be reflected in the plan of studies.

The division of credits in class hours and individual study hours is recommended to be arranged in accordance with annex No.5 of the Directive of the Minister of Education and Science No. 15, dated 04.04.2008 "On the organization of studies in public higher education institutions", as long as no recent legislative act is defining another form. A standardised conversion system would be recommended.

On the SER the institution is declaring that a working group is dealing with the updating of the curricula according to the Decision of the Council of Ministers No. 41 dated 24.01.2018.

Curriculum distributed according to Formation of Activities (A-F) (Table 12)

The formation activities are divided as follows:

A - 56/300 = 18.6%, B- 139/300 = 46.3%, C- 22/300 = 7.3%, D- 36/300 = 12%, E- 17/300 = 5.7%, F- 30/300 = 10%.

It can be noticed that the elective disciplines are more than allowed in the Directive of the Minister of Education and Science No. 15, dated 04.04.2008 "On the organization of studies in public higher education institutions" (7-8%). This indicator would have to be checked and adjusted with the indications of DCM 41, date 24.01.2018.

In the given Table 12, the courses Design Methods, Advanced Structural Systems, Housing Systems, Case Studies in Architectural Criticism, Sunlight in Architecture, Urban Planning, Special Topics in Architectural Design, Special Topics in Building Technology, Special Topics in Urban Planning and Design are referred as nonelective courses, while the student can follow only 4/12 courses shown in the curricula. If counted in this way, the number of elective subjects would increase significantly in 51/300 credits or the equivalent of 17% which is considered high according to both Directive No. 15 and DCM No. 41 mentioned above.

Changes in the curriculum, compared to licensed/accredited program (Table 13)

According to Table 13, the changes in the program are less than 20% and are not of major importance in content.

Curriculum related to respective academic staff (Table 14)

The academic staff has the proper qualification to lecture in the respective subjects as shown in Table 14. It can be noticed that some lecturers in the department result to cover numerous subjects, which could affect the teaching quality. It is recommended that the department looks forward to increase the number of full time qualified academic staff in order to decrease the weekly load and number of subjects they cover.

Syllabus per each subject, where the following elements should be included:

- Name of the subject / module
- Year / semester when the course is taught
- Name of lecturer who will teach the course



- The place that subject occupies in terms of the overall formation of the student
- Prerequisites (preliminary knowledge) that the student should possess in order to continue the study in the subject
- What knowledge and skills does this subject provide to the students
- Topics to be covered by the course concerning theoretical and practical formation
- Load according to hours in the auditorium and outside the auditorium as well as in ECTS
- The forms and methods of teaching of the subject and the relations between them
- Student assessment forms
- Obligations of the student concerning the subject
- Mandatory and auxiliary literature

Agustina

Syllabuses are well formatted and completed with the respective info.

All the required information, in accordance with the Bologna requirements, is clearly presented allowing the students to fully understand what is expected from the course and the skills they should acquire.

Analysis of the quality of syllabi

The quality of the syllabuses is high. The program offers a high quality theoretical and practical knowledge, professional skills and scientific competences allowing the students to become excellent professionals as well as giving good background for those who want to proceed for a 3rd cycle in Architecture.

Evaluation according to Standards:

Standards/Criteria	Evaluation according to standards
Standard I. 1 - Institution offers study programs in accordance with its mission and purpose.	
<p>Criterion 1 Institution offers accredited study programs, organized in modules and evaluated by credits under European Credits Collection and Transfer System (ECTS);</p> <p>Criterion 2 Average amount of credits accrued during the year by a student who attends a full-time study program is 60 credits;</p>	<p>Epoka University is offering accredited programs that are organized in modules expressed in ECTS.</p> <p>The 5 year program in architecture is composed of 5 years x 60 ECTS = 300 ECTS.</p> <p>The meaning of 1 ECTS for each activity is not standardised and has different values when referring to class hours.</p> <p>The program is in general well organized, and fits the mission of the university, market needs & national economic needs.</p> <p>The formation in architecture is a direct contribution related to the understanding, preserving and developing the built heritage as part of the national culture, tradition and values.</p>
Standard I.2 - Study programs are consistent with institution's development strategy.	

[Signature]

<p>Criterion 2 Second cycle study programs "Master of Science", "Master of Fine Arts" or "Professional Master" provide students who possess the university degree "Bachelor" with in-depth theoretical and practical knowledge, and training for scientific research or proper professional training;</p> <p>Criterion 3 Study programs: Master of Science" or "Master of Fine Arts" and "Professional Master" intend to expand the knowledge acquired in the first cycle of studies;</p> <p>Criterion 4 Integrated study programs of second cycle (in medicine, dentistry, pharmacy, veterinary, architecture) provide students with in-depth knowledge, theoretical and practical scientific competencies, and scientific research training according to the field. After their completion and successful completion of State exam for the specific program, students are entitled to exercise a regulated profession under the law in force;</p> <p>Criterion 5 Study programs of this cycle provide students with general and professional competencies intended to be achieved or enlarged during its conduct;</p> <p>Criterion 6 Study programs: "Master of Science" or "Master of Fine Arts" and "Professional Master" create strong knowledge foundations for the third cycle of studies - doctorate, including qualification for scientific research and meeting of prerequisites (knowledge, skills and competencies) for admission to the third cycle of studies;</p> <p>Criterion 7 "Professional Master" study programs have clear professional, justifiable, achievable objectives, with clear goals for achieving the necessary qualifications and in accordance with labour market requirements.</p>	<p>The development strategy of the institution is aiming to develop all the current programs held in Epoka University.</p> <p>The 5 year integrated program in architecture, is conceived to offer an integrated formation during five years dealing with theoretical and practical knowledge, professional formation and research processes.</p> <p>Upon completion of studies, students are entitled to work as architects after obtaining the professional licence from the ministry of infrastructure.</p> <p>The students completing this program have the right to continue doctoral studies if accepted by the university offering this level of studies.</p> <p>Although students obtain a MSc. degree and are entitled for third cycle studies (PhD), a very limited number are using this right. Most of the students, aim the professional field and work in architectural practices or related industries.</p>
<p>Standard I.4 - Study programs are offered in accordance with level of studies.</p>	
<p>Criterion 1 The content and order of objectives of study programs aim at achieving their goals in line with the level of studies in which they are offered;</p> <p>Criterion 2 Methods of students' assessment through continuous knowledge control by means of tests with alternative answers or final exams demonstrate students' progress and achievements for relevant cycle of studies.</p>	<p>The formal structure of the program and its name are complying with the legislative framework.</p> <p>The program is structured to fit the requirements for the respective level of studies.</p> <p>Assessment of students is based on continuous knowledge control where tests, and intermediate juries evaluate the step by step progress of the students in the course activities.</p>
<p>Standard I.5 - Study programs aim to reach international dimensions.</p>	
<p>Criterion 1 Study programs are based on many years experience and practices of European countries;</p> <p>Criterion 2 Study programs are internationally competitive in the elements they contain (general information, key objectives, curriculum, credits,</p>	<p>The studio based approach and the basic disciplines of the program refer to well consolidated experiences in Europe and in the US.</p> <p>From the formal aspect, the program is well</p>

<p>terms of admission, assessment methods, criteria and procedures for transfer of acquired credits and knowledge, diplomas awarded on completion, etc..) affirming university education values in Albania;</p> <p>Criterion 3 Study programs are designed in accordance with objectives defined in the EU legislation and directives on higher education and regulated professions.</p>	<p>designed and compatible with the Bologna process, which makes it easy to understand, to compare and to recognise in Europe.</p> <p>The contents of the program are qualitative and shows a serious effort in cultivating a high level university education.</p> <p>The program is fitting the directives and objectives of EU legislation and at the same time takes into account architecture as a regulated profession.</p>
<p>Standard I.6 - Study programs include vocational training and scientific research.</p>	
<p>Criterion 1 Second cycle programs and second cycle integrated programs include vocational training and scientific research;</p> <p>Criterion 2 Study programs are designed in accordance with the Higher Education Institution profile and its development strategy;</p> <p>Criterion 3 Academic staff is engaged in scientific research work for realization of study programs;</p> <p>Criterion 4 Research work of academic staff engaged in study program implementation corresponds with the aims to meet its objectives.</p>	<p>The summer practice (internship) is the principal activity of vocational training that the student has to get by working in a company that operates in the design or construction sector.</p> <p>Research is part of the studio works and master thesis where a theoretical approach is requested.</p> <p>The program is designed according to the institutional development strategy.</p> <p>Research is an integral part of the work of academic staff which helps improving the quality of the program. The research fields in most cases match the subjects covered by the academic staff so they contribute directly to the curricular quality.</p>
<p>Standard I.7 - Study programs "Professional Master" are offered in accordance with labour market needs.</p>	
<p>Criterion 1 Second cycle study programs "Professional Master" are offered in accordance with labor market needs;</p> <p>Criterion 2 Second cycle study programs "Professional Master" aim at meeting the needs in relevant domestic or foreign economy sectors.</p>	<p>N/A</p>
<p>Standard I.8 - Study programs take into account labour market needs.</p>	
<p>Criterion 1 Study programs take into account labour market needs and are prepared in accordance with strategic goals of national economic development;</p> <p>Criterion 2 In order to assess labour market needs, Institution carries out a market study, which includes:</p> <ul style="list-style-type: none"> a. students' employment opportunities in domestic or regional, national and international market; b. demands of employers; c. a rough estimate of expected number of students that may be enrolled in this program; 	<p>Although the number of young architects has increased rapidly during the last years, there is no employment problems faced till now. The figure of the architect is directly related to the construction industry, design of interiors and furniture, planning, building materials industry etc. All of these are an important contributor to the national economic development.</p> <p>There is not a market study document, but the institution is assessing the market needs through the continuous relationship with companies and alumni.</p> <p>To be considered is that a considerable number of students continue their career abroad and</p>

d. number of enrolments in similar programs of sister institutions.	become part of a larger market.
Standard I.9 - Study programs aim at maintaining national cultural values and national interests.	
<p>Criterion 1 Institution offers study programs that do not conflict with national interests;</p> <p>Criterion 2 Study programs intend to help preserve national cultural values.</p>	<p>Architecture as a discipline is directly related to heritage and cultural values.</p> <p>The programs offered by the department of architecture are focussed into understanding, preserving, and creating values at national or local scale.</p>
Standard I.12 - Duration and number of credits for study programs of this cycle are in accordance with law No. 9741 of 21.5.2007, "On Higher Education in Republic of Albania", amended.	
<p>Criterion 1 Study programs "Master of Science" is realized with 120 European credits, ECTS, including 30-40 European credits, ECTS for the research project and thesis to be prepared at the completion of these study programs. Normal duration is 2 academic years;</p> <p>Criterion 2 Study programs "Professional Master" are conducted with 60-90 European credits, ECTS. Their normal duration is 1-1.5 (one to one year and a half) academic years.</p> <p>Criterion 3 Integrated study programs of second cycle are completed with the issue of diploma "Master of Science." They are conducted with no less than 300 European credits, ECTS (360 European credits, ECTS for studies in the medical field). Normal duration of integrated study programs is no less than five academic years (6 years for studies in the medicine field).</p>	<p>The PICD (Second Cycle Integrated Program) in Architecture is a 5 year program consisting of 5 years x 60 ECTS = 300 ECTS. The issued diploma for this program is "Master of Science in Architecture". The thesis preparation has 30 ECTS on the last (10th) semester.</p> <p>There is an institutional development strategy which aims to improve study programs, teaching and learning results and the overall quality.</p>
Standard II.6 - Institution provides effective management of information about study programs.	
<p>Criterion 1 The information provided for study programs, modules and syllabuses is easily consultable for students;</p> <p>Criterion 2 Information on study programs, modules and syllabuses is offered in various written and electronic forms.</p>	<p>Most of the information regarding the program is easily accessible online or through the student portal. Detailed material is available on demand in the Department of Architecture or in the respective university structures.</p> <p>Students get informed mainly online, but at the same time they get hand-outs at the beginning of the specific courses.</p>
Standard II.8 - Second cycle study programs and second cycle integrated study programs provide for a graduation plan.	
<p>Criterion 1 Graduation plan explains graduation manner at the completion of studies within the prescribed period;</p> <p>Criterion 2 30-40 credits are foreseen for the implementation of study programs "Master of Science", for research project and thesis.</p>	<p>The graduation path explains the thesis preparation process where most of the work is done individually by the student who is supervised by academic staff members. The thesis should be prepared during the last semester of studies and consists of 750 hours of independent work (30 ECTS).</p>

Considering that most of the thesis are also project oriented, it is advisable to preserve the studio character also during the thesis preparation where discussion and interaction can contribute in the quality of the outcome.

In any case, a certain number of class hours should be assigned for the supervisor and thesis reviews and/or juries, reducing the hours of independent work for the student.

Conclusions of the evaluation:

The program is structured referring to the Albanian legislation and aims at a second cycle degree which lead to doctoral studies. The content of the program is referring to the tradition of architectural education based on studio work.

The organisation of the study plan is unclear referring to the ECTS distribution and didactic activities. At the same time the weight of elective courses is considered high. It would be recommended to review the plan with references to the Directive of the Minister of Education and Science No. 15, dated 04.04.2008 "On the organization of studies in public higher education institutions". At the same time the program has to be adjusted to DCM No. 41, dated 24.01.2018 regarding the formative disciplines.

The standards: Substantially met

Recommendations:

It is recommended that the department looks forward to increase the number of full time qualified academic staff in order to provide qualitative teaching, decrease the weekly teaching load of the staff and reduce the number of subjects they cover.

According to Professional Practice and Master Thesis, the ratio of class hours to the independent work has to be reconsidered. The presentation of Professional Practice and the academic control of the process require a minimum amount of hours that should be reflected in the plan of studies.

The division of credits in class hours and individual study hours is recommended to be arranged in accordance with annex No.5 of the Directive of the Minister of Education and Science No. 15, dated 04.04.2008 "On the organization of studies in public higher education institutions", as long as no recent legislative act is defining another form. A standardised conversion system would be recommended.

A reduction of the number of elective disciplines and the inclusion of the Design Fields as Elective Fields is recommended.

8. Teaching

Description

Terms of reference: organization of teaching, forms of teaching, load and quality of implementation, control of student knowledge, teaching methods, teaching technologies, internal evaluation of teaching, engagement of students in the components of the activity of the unit, etc.

The organisation of teaching activities is somehow unclear as a result of adapting the 4 year program based on the American system to a 5 year system in ECTS base. The difference between lecture and seminar is not well defined, allowing the flexibility to the lecturer to interpret the hours in auditorium as classical lectures, interactive discussions, exercises,

studio hours etc. There is not a constant definition of how many hours in auditorium 1 ECTS is covering for each activity. For example, 1 ECTS of lectures = 18 hours in auditorium for some courses and 6.4 for others. Seminars vary from 7.8 to 16 hours per 1 ECTS. A constant factor would help in having a more standardised understanding of the curricula and of the teaching activity associated to that.

In the first year of studies of the 5 year program, the total hours in auditorium are 856 / max 750 allowed. This is causing an extra load of the weekly schedule for the students and is not complying with the legislative acts.

The teaching methodology follows the traditional studio based process, well known in most of the architectural schools worldwide. The usage of infrastructure and equipment to assist the class hours is appropriate for architectural education. A quality system is established in university base, where one of the most visible parts is the teacher evaluation form filled by the students every semester. Although a quality system is present, measurable results of its impact are hard to evidence. Based on the specificity of architectural curricula, the role of the department in controlling, evaluating and improving the quality should be more active, and the system could have a discipline related to methodology for quality control.

Measurable indicators:

- Load in hours for forms of teaching (Table 15)

The class hours cover a total of 3031 hours while the ratio between Lectures and Seminars is 2.1/1. If referring to the concept of classical lectures, this ratio is too high. Considering that the system applied in the university consists of lectures that include different activities (discussions, workshops, studio work, etc.) it is advisable to express these activities in separate indicators.

- Forms of control of Knowledge (Table 16)

The control of knowledge is done through components that assess the continuous performance through the year. According to the discipline, the final exam weights 30-60% of the final evaluation. Such approach to the final grade is considered to be efficient and to help students to have an equally distributed load throughout the semester.

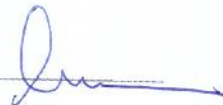
- Grade awarding system (Table 17)

The grading system is based on both the Albanian (1-10) system and the American one (0-4). The minimal passing grade is 5/10 which corresponds to a total of point of minimum 60/100. This is considered a relatively strict policy that stimulates students to give more effort to collect this score.

A minimum CGPA of 1.8 is requested to graduate, which is equivalent of the grade 6.5/10. Students that have lower results, have to repeat courses where they got low evaluation in order to be able to complete their studies. Also this policy is considered to be a good practice in assuring good quality students after graduation.

- Engagement of students in the components of the activity of the unit (Table 18)

The data presented by the Department in Table 18 show a high level of engagement of the students in its activity.



9. Students

Description

Terms of reference: student admission procedures, quality of enrolled students, number of enrolled and graduated students over the years, average duration of studies, passing rate of students and problems related to this, statistics, employment of graduates, communication with graduated students (alumni), informing of students.

The student admission office is responsible about the preliminary information on the offered programs and about following all enrolment procedures. The quality of incoming students is relatively good considering that some of them are coming from the Turgut Ozal colleges, part of the same group owning Epoka University. Other qualitative students are attracted from the English language program in architecture and from the merit based scholarships offered. At the same time, students with a lower average grade than 7/10 are not accepted.

The number of the students in the 5 year program in architecture varies from a minimum of 31 to a maximum of 60 by showing a stable demand for this program. On average half of the total number of students complete the studies within 5 years. In general there is a reduction on the average grade students have when they complete their studies compared to the results they present in the beginning. This shows an effort in keeping an objective grading system in the university. In any case, the median CGPA of graduated students is about 2.9-3/4 which is considered as relatively high.

Almost 100% of graduates have immediate employment which is a good indicator of the demand for architects in the market and the formation that the students receive. Although the salaries for young architects have decreased during the last years (due to the large number available) the employment rate is still good and the competitiveness of the market is getting higher.

The university is trying to keep a detailed database of the alumni and to follow their career through the Career and Alumni office which collects detailed data.

Measurable indicators:

- Procedures of student admission (Specific criteria for the admission of students)

The procedures and criteria for admission are in accordance to the legislation on higher education in Albania.

- Quality of enrolled and graduated students (Table 19)

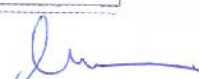
Referring to Table 19, the actual number of students is 225. Students complete their studies with a lower average than the entering one. On the other hand, the average grades of the students result to be from 2.9/4 to 3/4 (mathematically converted in scale 1-10 the average of students have a grade 7.2-7.5/10) which results relatively high.

- Data of the employment of graduate students (Table 20)

The data in Table 20 show a high rate of occupation of 55 - 70 %. Although, higher occupation rates are thought to be realistic in few years after graduation.

Evaluation according to Standards:

Standards/Criterions	Evaluation according to standards
----------------------	-----------------------------------



Standard IV.1 - Students have the right to pursue study programs of second cycle and integrated study programs of second cycle.

Criterion 1 Students who attend study programs "Master of Science" or "Professional Master" have at least a university degree "Bachelor" and have accumulated 180 ECTS credits;

Criterion 2 Admission to integrated study programs is made in accordance with Law No. 9741 of 21.5.2007, "On Higher Education in Republic of Albania", amended, and bylaws in force;

Criterion 3 Students meet eligibility criteria set by the institution;

Criterion 4 Students of these study programs give English exam based on internationally recognized tests until graduation. For study programs "Professional Master", English level is B2, and for study programs "Master of Sciences and integrated study programs of second cycle level of English is C1, under the European Framework for Languages;

Criterion 5 Institution evaluates admission policies and their impact on further progress of students in the study program, and designs possible plans to change admission criteria.

The students attending the 300 ECTS, 5 year integrated program have completed the high school education in accordance with the actual legislation in Albania (law 80/2015).

Students are enrolled according to the criteria set by the institution conform the actual legislation. A minimum average grade of 7/10 is required from to apply. A design competition is held before the admission period, to allow prospective students to get in touch with the university and to learn more about architecture, and at the same time to identify possible candidates with high skills and talent.

The education in Epoka University is in English language, and the students are requested to have proper knowledge of the language on admission. The students present the needed documentation regarding foreign languages in accordance with the legislation.

The admission criteria set at the moment guarantee a constant number of students of good quality. There is a routine approval of the admission criteria every year which are based on the demands coming from each Faculty / Department.

Standard IV. 2 - Institution informs students about: the institution status, study programs it offers and employment policies.

Criterion 1 Students are given information about opportunities for employment after graduation at the completion of these study programs;

Criterion 2 Students are given information about institution's accreditation and study programs offered as well as recognition and validity, at home and abroad, of diploma, issued by the institution;

Criterion 3 Students are offered career counseling service.

The career and alumni office and the academic advisors provide students with information and support on their possibilities of employment during their education.

Prospective students are informed by the Admission Office about the basics on the program.

The information about the program, its validity, accreditation etc. is provided mainly through the web site of the university.

On demand, additional information can be accessed at the faculty or department level.

Standard IV. 3 - When institution applies for evaluation and accreditation for the second time, it has statistics about the number of students attending study programs of second cycle and integrated programs of second cycle.

Criterion 1 Institution has annual statistics on number of graduates in study programs they have completed;

Criterion 2 Institution possesses annual statistics on number of students enrolled in study programs of second cycle and integrated study programs second cycle, withdrawals from program, dropouts before

The university has detailed data on the number of graduates, and at the same time follows their career through the alumni office.

The registration office has detailed data on the number of students enrolled, those who have been transferred, those who interrupted their studies etc.

The registrar office keeps also the detailed results of

<p>program completion, and unsuccessful completion of academic year;</p> <p>Criterion 3 Institution has data on academic performance of students from admission to graduation.</p>	<p>each student and the whole documentation related to exams and graduation.</p> <p>The data are kept both in hard copy and also in electronic form, which allows easy access and generation of statistics.</p>
<p>Standard IV. 4 - Institution has a database about employment statistics of graduate students after completion of study programs of second cycle and integrated study programs of second cycle.</p>	
<p>Criterion 1 Institution maintains a database of students employed after completion of study programs of second cycle or integrated study programs of second cycle and their employment places;</p> <p>Criterion 2 Institution maintains a database for students who continue further studies in other study cycles, etc..</p>	<p>The career and alumni office had detailed information on the graduated students and is keeping records of their employment status or further career advancement.</p> <p>Considering that the number of students graduated in Epoka is not very high, it has been possible to create an accurate database and to keep the information updated.</p>
<p>Standard IV. 5 - Institution informs students consistently in details about study programs.</p>	
<p>Criterion 1 Students are informed in details about study programs, time of completion and organization of program, program accreditation status;</p> <p>Criterion 2 Students are informed about evaluation results during the program and at its completion;</p> <p>Criterion 3 The module head discusses the results of these evaluations with students openly.</p>	<p>The information for students is easily accessible in the web page of the university and also through the web portal of the students. Detailed information is available on demand in the department and faculty.</p> <p>It seems that the communication between students and academic staff is quite opened and direct and the students have good level of knowledge about the program.</p>
<p>Standard IV. 6 - Institution engages its staff to care for students.</p>	
<p>Criterion 1 Institution provides counseling for students, it follows their progress and helps to address and resolve issues and problems that relate to the teaching process;</p> <p>Criterion 2 Institution (through the office for career counseling) helps students to select the institution in which they will carry out the professional practice, when this is foreseen.</p>	<p>The academic staff helps the students during their studies by orienting them and addressing their problems. The academic staff is receiving students during the office hours. Considering that the Department of architecture has a limited number of students, the advisory system results to be efficient and the contacts with professors and the authorities are easy and frequent.</p> <p>The career and alumni office orients students during their studies and keeps contacts after graduation.</p> <p>The career office is providing students with information and contacts for their internships and is organising activities where students get in touch with companies in order to benefit of possible opportunities of employment. Such activity is the career fair organised yearly in the university.</p>
<p>Conclusions of the evaluation:</p> <p>In the 5 years architecture program, students are enrolled in accordance with the</p>	

Epoka

[Signature]

legislative framework. The number and quality of students result to be almost constant.

The student information system is easily accessible and students result to be well informed about their program and all other issues concerning their education. Information is available online, in the department, in the career office, and in the registration office.

The standards: are fully met

Jeff

SCIENTIFIC RESEARCH POLICY

10. Scientific research

Description

Terms of reference: scientific research policies, publications over the years, projects acquired and implemented, participation in activities within and outside the country, activities organized by the unit, connection of research with teaching, official evaluation of individual research activities or of the research activities of the unit

The Department of Architecture is having continuous research work mostly on individual contributions of the staff members. There is a list of publications for each academic year which can be accessed online while at present there is no ongoing research program at the Department of Architecture. There is a support from the University for the participation in conferences and there is also bonuses for publications in impact factor periodicals. Although the University has organized in the past successful conferences such as ICAUD (International Conference on Architecture and Urban Design 2012, 2014), there is no recent research focused activities concerning architectural science.

The Department is currently participating as partner in two research projects, respectively:

1. ERASMUS+ Project 2016 "Knowledge for a Resilient Society (K - FORCE, Project number: 573942-EPP-1-2016-1-RS-EPPKA2-CBHE-JP).
2. Renewable Energy and Landscape Quality - (COST Action TU 1401).

The individual research conducted by the academic staff generally corresponds to their teaching activity or to their field of interest. The department is trying to structure such activity by creating research areas, but still the contribution is on individual basis and there is no financed research at the moment relevant to these areas.

The University states that the main objective of the CORDA Research Center is to facilitate the engagement of architectural students in professional practice. This should not be the main purpose of a Research Centre.

Measurable indicators:

- Data on scientific research (Table 21)

Data on research show an active research environment in the University within the last five years. There are on average 95 publications/year from the academic staff which demonstrates an active engagement in research activity.

Evaluation according to Standards:

Ju

Standards/Criteria	Evaluation according to standards
Standard III.3 - Academic staff is engaged in scientific activities organized in the study program framework.	
<p>Criterion 1 Academic staff publishes regularly articles, scientific materials in relevant discipline;</p> <p>Criterion 2 through engagement in these activities, academic staffs give their contribution to development of science or development of production or service sectors.</p>	<p>Most of the academic staff is engaged in research mostly on individual bases. Although the department has tried to create structures (research areas) that plan and orient the research, there is no research projects that run and get financed regularly.</p> <p>The research conducted is mostly related to theoretical issues / fields and less to the application and direct contribution to production or services.</p>
Standard III.4 - Institution offers also teaching programs in foreign language, with a qualified academic staff.	
<p>Criterion 1 Academic staff that is engaged in teaching in foreign language has conducted university studies in that language or possesses a certificate for its advanced mastery;</p> <p>Criterion 2 Academic staff that engages in teaching in foreign language has teaching experience in that language for one semester at least.</p>	<p>The academic staff is fully proficient in English and most of them have studied abroad.</p> <p>The whole program is taught in English language. This is considered also as one of the strongest points of this program.</p>
Standard III.10 - Institution is committed to continuous and further training of its staff.	
<p>Criterion 1 Institution organizes specific programs for further professional qualification of academic and teaching-scientific staff;</p> <p>Criterion 2 Institution provides academic and teaching-scientific staff with the possibility of further qualifications in the country and abroad.</p>	<p>There is evidences of activities undertaken for the training of academic staff especially on the teaching methodology and other issues related to the academic agenda. Nevertheless there is no regular agenda about these activities.</p> <p>The institution tries to promote qualification of the staff especially through mobility to other partner institutions, mostly financed by EU programs such as Erasmus+ or by enabling the participation to scientific conferences.</p> <p>Staff members have been teaching and exchanging experience in the last years with Politecnico di Bari and University of Gdansk.</p>
Standard III.11 - Institution has a database about scientific-research activities of its academic staff.	
<p>Criterion 1 Institution has a database of scientific studies of academic staff engaged in this study program;</p> <p>Criterion 2 Institution has a database of publications (texts, monographs, books, articles or presentations in conferences) inside and outside the country by academic staff engaged in this study program;</p> <p>Criterion 3 Institution has a database</p>	<p>The Faculty of Architecture and Engineering has an online list of the articles or other research work published in</p> <p>http://fae.epoka.edu.pl/home-publications-647-1854.html</p> <p>All the research work is also documented in the Research and Projects Office of the University.</p> <p>This office is also responsible for keeping records of all</p>

for national and international scientific research projects in which academic staff engaged in this study took part or takes part.

the research activity and involvement of academic staff.

J. H. H.

Conclusions of the evaluation:

The individual research of staff members is the base of the research activity ongoing in Epoka University. Such research is mostly focused on theoretical issues / aspects of architectural science. The university seems concerned in the continuous training of staff and in the promotion of qualitative research work. In any case, more support is needed for organising regular research focused activities and in having financially supported research projects.

The usage of English language within the institution is considered to be one of the strongest points both for students and academics.

Although there is a constant effort, the program should focus on a regular structured research activity, financed by the university or outer sources. Research activities such as conferences, seminars or other forms of sharing and promoting the results of research work should be present on a regular basis.

The standards: are substantially met

11. National and international cooperation, relations with the public

Description

Terms of reference: cooperation with other institutions at the local, national or international level, the mobility of academic personnel in each of the abovementioned levels, participation in national and international programs, links with the business community and the labour market.

Epoka University demonstrates to be in active relationship with partners from the academic field and also non-academic institutions in Albania or abroad. The mobility towards academic institutions is present in the recent years mostly through staff exchange benefiting from Erasmus + agreements. The relationships with the business community and labour market are mostly focussed on the development of practical activity such as practices and internships. Although the environment seems active in offering dynamic relations with partners, the business and industry related research is not yet present in the university.

Measurable indicators:

- Data on national and international cooperation (Table 22)

According to the data of Table 22, Epoka University shows to have active collaborations with local and international partners. This includes mobility of students and staff, and at the same time participation in common projects.

- Communication and cooperation with other state institutions, professional organizations, business community, labour market and other social actors important for higher education (Table 23)

[Signature]

There is a list of 109 partners with the university belonging to state institutions, HEI, professional and business community etc. 37 cooperation are related to the summer practice activity for students, 7 include Erasmus + agreement, and the rest are agreements on bilateral cooperation (65).

Byf...

Evaluation according to Standards:

Standards/Criterions	Evaluation according to standards
Standard V. 3 - Institution has cooperative relations with domestic or foreign business actors to carry out practices his students.	
<p>Criterion 1 for carrying out various practices provided for the realization of study program "Master Professional", Institution demonstrates that has cooperative relations with the enterprise or venture out areas of trade, industry or manufacturing services;</p> <p>Criterion 2 To perform the different practices in the study program "Master of Science" or in programs of integrated studies second cycle, Institution demonstrates that there is cooperation relationship with various actors from the public sphere and that private enable the benefit of the best professional knowledge by student.</p>	<p>The University has a list of 37 partners which are collaborating in fulfilling the practice/internship hours planned in the curricula.</p> <p>These partners are professional organizations and/or companies related to the labour market.</p> <p>The summer practice is one of the main curricular activities which is held in the partner companies and where the student is involved in practical activity.</p>
Standard VII.1 - Institution guarantees fruitful cooperation relations among its staff.	
<p>Criterion 1 For drafting and overseeing the program, institution promotes cooperation among staff within the institution through information exchange;</p> <p>Criterion 2 With division of duties between personnel within the institution, by taking respective responsibilities and continued analysis of their work, institution guarantees fruitful cooperation relations.</p>	<p>The program is reviewed periodically in the Department of Architecture which guaranties the involvement of all the academic staff in the process. However a less hierarchic approach, stimulating active participation and debate would be recommended.</p> <p>In university scale, the collaboration between the staff members results efficient and well-structured. The hierarchic structure of the university is defined in the Statute and the respective Regulations.</p>
Standard VII.2 - Institution guarantees collaborative relationship with counterpart institutions abroad and domestic or foreign business actors.	
<p>Criterion 1 Institution has established cooperation relations with counterpart institutions abroad and domestic or foreign business actors in order to achieve objectives of study programs.</p> <p>Criterion 2 Institution establishes cooperative relations with employers for the conduct and supervision of practice, depending on study programs it provides;</p> <p>Criterion 3 Institution organizes further vocational training in coordination with the employer;</p> <p>Criterion 4 Institution makes an analytical report of benefits from contractual agreements for the realization of study programs.</p>	<p>The university has provided a large number of partners related to the academic, public and professional sector, both in Albania and abroad. This network is assisting directly and indirectly the quality of the program, by offering direct contact with the students, through exchange programs or internships, but at the same time by offering the possibility for the academic staff to be in touch with other academic environments or the professional domain.</p> <p>While the summer practice results to be a successful activity conducted in partnership with companies operating in the Albanian</p>

[Signature]

market, the vocational trainings are lacking.

There is no proper analysis of the benefits of the specific program from the agreements and relations established. This report would help in improving and consolidating a relationship that goes further than exchange or internships.

Josephine

Conclusions of the evaluation:

Epoka university has established a large number of partners that offer the possibility for students to benefit from internships and to be in touch with professional activities.

The further consolidation of these relationships would bring not only the support to the curricular activity, but at the same time the continuous relation of the academic environment with the market, and the involvement of academics in industry related research.

The standards: are fully met

[Signature]

ANALYSIS OF FULFILLING THE RECOMMENDATIONS GIVEN BY THE ACCREDITATION COUNCIL IN THE DECISION OF THE FIRST ACCREDITATION (for BSc in Architecture-4 years)

Agreement

- a) Recommendation is *partially fulfilled*. After the reorganization of the program, there have been changes resulting in improvement of the program activities to fit the Bologna process. Nevertheless, the university has to still review the ECTS system and the elective courses weight in the program structure.
- b) Recommendation is fulfilled.
- c) Recommendation is fulfilled.
- d) Recommendation is *partially fulfilled*. There is a constant effort in raising the qualification of the academic staff and their specialisation. Still the problem of the academic staff teaching in many disciplines is a problem to be faced. At the same time, the reduction of workload for the full time academic staff could also influence this parameter.
- e) Recommendation is fulfilled.

SWOT ANALYSES

Summary analysis by SWOT method (**S**trengths, **W**eaknesses, **O**pportunities, **T**hreats).

a. STRENGTHS:

- 1) The education in Epoka University is offered in English language.
- 2) The infrastructure and the facilities within the university offer a qualitative environment for the academic activity. The Design Studios offer very good conditions for the student to work, considering the specific needs of architecture students.
- 3) Epoka University offers merit based scholarships that enable qualitative students to choose its programs.
- 4) The Integrated Study program in Architecture requires a minimum of 7/10 average for admission that guarantees qualitative students entering the program.
- 5) The yearly Design Competition for High School Students is considered as a good practice to let prospective students understand better the nature of architectural studies, while establishing a dialogue between the university and the high school.
- 6) Curricula in accordance with the market needs and in accordance with the international high quality architectural schools.
- 7) The existence of the Summer Activities.
- 8) Almost full employment of the students after finishing the course.

b. WEAKNESSES:

- 1) Lack of the possibility for the student to choose one of the three design fields (architectural design, building technology, urban planning and design) offered from the

Signature

program because the three fields do not run parallel. Such specialisation is not mentioned in the diploma issued by the institution.

- 2) Although the curricula are aiming a scientific formation, the percentile of the students following the doctoral studies is very low, while most of them choose the professional activity.
- 3) The study plan is unclear regarding the way ECTS are related to the didactic activities. It is necessary to have a clear definition about the type of activities and the respective hours for each credit.
- 4) The percentage of elective courses is considered high for the specific program. At the same time the specialisation courses, which are different in the different design fields, are not counted as electives, although the students cannot follow all of them (the student can follow only 3 from 9 available courses from this category).
- 5) Lack of professors holding a PhD degree (only 4 have it).
- 6) Professors are overloaded with teaching activity. The remaining available time is not enough to improve the research activity.
- 7) Research activity needs to improve and intensify.
- 8) Few contacts with local industry or local authorities with no impact in funds affecting both academic and research activities.
- 9) The Quality control System is not yet fully developed.

c. OPPORTUNITIES:

- 1) The improvement of the Quality Assurance System through the creation of a Department / Faculty based quality system related to the specifics of the program could impact more the overall quality. Such system should be an active approach that can be based on the principle Plan - Do - Check - Act where the Department would have a crucial role.
- 2) The improvement of the quality of the program is strongly related to the number of qualified academic staff belonging to the categories Lecturer and Professor.
- 3) The academic activity of the program would be assisted if more laboratories and/or facilities related to practical work and formation were available for the students and curricular activity.
- 4) Student and staff mobility are considered to give a very good contribution in the overall academic activity. The intensification of such exchange is considered as an opportunity for continuous improvement of the quality.
- 5) The Department can make more efforts to obtain research funding (from university, industry, state agencies or European funds) in order to create a well-structured and more impacting research environment.
- 6) The University could explore additional income sources in order to be able to increase its support for research and to reduce the studying cost for students.
- 7) Considering the specifics of the program and of the Department, a specific Action Plan (based on the strategic development plan) would help the overall development of the



program and an autonomous and program-specific track within the overall development of the university.

d. THREATS:

- 1) The quickly increasing number of architects and the crisis of the construction sector could present a threat in the future for the employment of the students following this program.

External Evaluation Team

 **Gjergji Islami**
Manuela Almeida



Annexes

Epo

Organization scheme of Epoka University

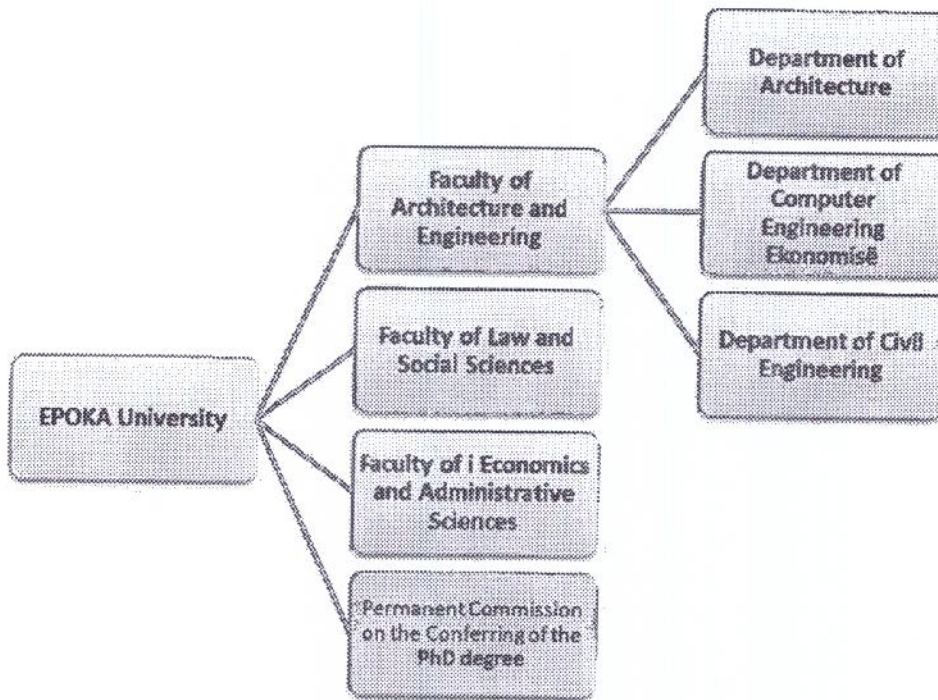


Table 1

HEI	Faculty of Architecture and Engineering (2017-2018)						
	Number of EAS		Number of ASC		Total		Number of AS
	Total	Titles/degree qualifications	Total	Titles/degree qualifications	Total	Titles/degree qualifications	
Department of Architecture	9	4	8	2	17	6	4
Department of Civil Engineering	7	5	13	9	20	14	5
Department of Computer Engineering	7	7	1	1	8	8	5
In total	23	16	22	12	45	28	14

List of Effective Academic Staf (EAS) and Academic Staf with Contracts (ASC) in the Departments 2017-2018 (Tables 2)

Tables 2

[Signature]

Faculty of Architecture and Engineering, Department of Architecture

EAS (Name Surname)	Title/ Degree	ASC (Name Surname)	Title/ Degree	Institution where they work full time
1 Edmond Manahasa	Dr Head of dep	1 Dorian Tytymce	Msc	Eurocol sh.p.k
2 Sokol Dervishi	Prof.As	2 Ernest Shtepani	Msc	Ministria e shqiptarëve Urban
3 Anna Yunitsyna	Dr	3 Frida Pashako	Dr	Bashkia Tiranë
4 Odeta Manahasa	Dr	4 Firo Vaso	Msc	Not employed
5 Artan Hysa	Msc	5 Erinda Sulej		ZRPP
6 Egin Zeka	Msc	6 Jurin Hajro	Msc	Commonsense studio
7 Desantilla Hysa	Msc	7 Albana Halili	Dr	Universiteti "A. Moisiu", Durrës
8 Artemis Hasa	Msc	8 Teuta Kodra		Akademia sh.p.k
9 Ina Ozmani	Msc			

Faculty of Architecture and Engineering, Department of Civil Engineering

EAS (Name Surname)	Title/ Degree	ASC (Name Surname)	Title/ Degree	Institution where they work full time
1 Miriam Ndini	Prof.As, Head of Department	1 Ervin Paci	Dr	Polytechnic University of Tirana
2 Huseyin Bilgin	Prof.As	2 Erion Bukaçi	Dr	Polytechnic University of Tirana
3 Erion Luga	Dr	3 Endrit Hoxha	Dr	-
4 Enca Mustafaraj	Dr	4 Ferdinand Berberi	Dr	TAP
5 Julinda Keçi	Dr	5 Ylber Muceli	Prof.As	Polytechnic University of Tirana
6 Armando Deana	Msc (PhD in Process)	6 Albana Halili*	Dr	University A. Moisiu, Durrës
7 Marsel Leti	Msc	7 Erind Bedalli*	Dr	University A. Xhuvani, Elbasan
		8 Klaudio Pëgini*	Msc	
		9 Enriketa Sogrudh*	Dr	
		10 Julian Hoxha*	Dr	
		11 Mustafa Ustuner*	Msc	
		12 Hakan Yazgali*	Msc	
		13 Artemis Hasa*	Msc	

Faculty of Architecture and Engineering, Department of Computer Engineering

EAS (Name Surname)	Title/ Degree	ASC (Name Surname)	Title/ Degree	Institution where they work full time
1 Arban Uka	Dr, Head of department	1 Endrit Enezi	Prof.As	University Polytechnico of Tirana
2 Betim Çiço	Prof.Dr			
3 Erion Domnari	Dr			
4 Endrit Staja	Dr			
5 Julian Hoxha	Dr			
6 Ali Osman Topal	Dr			
7 Ito Wasitu	Prof.As			

*] Guest Lectures

Faculty of Architecture and Engineering, Department of Architecture (2012-2019)

EAS (Name Surname)	Title/ Degree	ASC (Name Surname)	Title/ Degree	Institution where they work full time
1 Sokol Dervishi	Dr Head of Dep	1 Adelina Greca	Msc	Not employed
2 Mehmet Archiclioglu	Dr	2 Kamela Criza	Msc	Not employed
3 Iir Nese	Dr	3 Dorian Tytymce	Msc	Eurocol sh.p.k
4 Anna Yunitsyna	Msc	4 Klodian Xhehri	Msc	Erjoni sh.p.k
5 Edmond Manahasa	Msc	5 Belira Çeleni	Msc	Palma construction sh.p.k
6 Artan Hysa	Msc			
7 Desantilla Hysa	Msc			
8 Odeta Manahasa	Msc			
9 Valbona Koci	Msc			
10 Jurin Hajro	Msc			
11 Egin Zeka	Msc			

Faculty of Architecture and Engineering, Department of Architecture (2013-2014)					
EAS (Name Surname)	Title/Degree	ASC (Name Surname)	Title/Degree	Institution where they work full time	
1	Sokol Dervishi	Prof.As Head of Dep	1	Adelina Graca	Msc Not employed
2	Ibr Nase	Dr	2	Gjergj Vinjau	Msc Agjencia e shërbimit arkitekturik
3	Anna Yunitsyna	Dr	3	Dorian Tytymce	Msc Eurocol sh.p.k
4	Edmond Manahasa	Msc	4	Ledin Tota	Msc Agjencia e zhvillimit te territorit
5	Artan Hysa	Msc	5	Marrngjen Zyko	Msc Not employed
6	Desantila Hysa	Msc			
7	Odetta Manahasa	Msc			
8	Valbona Koci	Msc			
9	Jurim Hajro	Msc			
10	Egin Zeka	Msc			
11	Frida Pashako	Dr			
12	Artaus Hana	Bsc			
13	Ina Osmani	Bac			

Faculty of Architecture and Engineering, Department of Architecture (2014-2015)					
EAS (Name Surname)	Title/Degree	ASC (Name Surname)	Title/Degree	Institution where they work full time	
1	Sokol Dervishi	Prof.As	1	Etjana Shkrelli	Msc Go Albania 2
2	Frida Pashako	Dr	2	Ernest Shitapani	Msc Ministria e zhvillimit Urban
3	Anna Yunitsyna	Dr			
4	Edmond Manahasa	Msc			
5	Artan Hysa	Msc			
6	Desantila Hysa	Msc			
7	Odetta Manahasa	Msc			
8	Valbona Koci	Msc			
9	Jurim Hajro	Msc			
10	Egin Zeka	Msc			
11	Artemis Hana	Bsc			
12	Ina Osmani	Bsc			
13	Rogina Vushi	Bsc			
14	Fidan Miftari	Bsc			

Faculty of Architecture and Engineering, Department of Architecture (2015-2016)					
EAS (Name Surname)	Title/Degree	ASC (Name Surname)	Title/Degree	Institution where they work full time	
1	Sokol Dervishi	Prof.As	1	Dorian Tytymce	Msc Eurocol sh.p.k
2	Erion Luga	Dr	2	Ernest Shitapani	Msc Ministria e zhvillimit Urban
3	Anna Yunitsyna	Dr	3	Frida Pashako	Dr Bashkia Tiranë
4	Edmond Manahasa	Msc	4	Pirro Vaso	Msc Not employed
5	Desantila Hysa	Msc	5	Enkela Alimadhi	Msc Not employed
6	Odetta Manahasa	Msc			
7	Jurim Hajro	Msc			
8	Egin Zeka	Msc			
9	Ina Osmani	Bsc			

Faculty of Architecture and Engineering, Department of Architecture (2016-2017)					
EAS (Name Surname)	Title/Degree	ASC (Name Surname)	Title/Degree	Institution where they work full time	
1	Sokol Dervishi	Prof.As	1	Dorian Tytymce	Msc Eurocol sh.p.k
2	Erion Luga	Dr	2	Ernest Shitapani	Msc Ministria e zhvillimit Urban
3	Anna Yunitsyna	Dr	3	Frida Pashako	Dr Bashkia Tiranë

4	Edmond Manahasa	Dr	4	Pirro Vaso	Msc	Not employed
5	Odeta Manahasa	Dr	5	Klervis Zaimaj		Not employed
6	Desantila Hysa	Msc	6	Jurjin Hajro	Msc	Commonsense studio
7	Enkeja Ahmadi	Msc				
8	Ina Osmani	Msc				

Edmond

Faculty of Architecture and Engineering, Department of Architecture (2017-2018)						
EAS (Name Surname)	Title/Degree	ASC (Name Surname)	Title/Degree	Institution where they work full time		
1	Edmond Manahasa	Dr Head of dep	1	Dorian Tytmcc	Msc	Eurocol sh.p.k
2	Sokol Dervishi	Prof.As	2	Ernest Shtepani	Msc	Ministria e zhvillimit Urban
3	Anna Yunitsyna	Dr	3	Frida Pashako	Dr	Bashkia Tirane
4	Odeta Manahasa	Dr	4	Pirro Vaso	Msc	Not employed
5	Arian Hysa	Msc	5	Erilda Sulaj		ZRPP
6	Egin Zeka	Msc	6	Jurjin Hajro	Msc	Commonsense studio
7	Desantila Hysa	Msc	7	Albana Hahli	Dr	Universiteti "A. Moisiu", Durres
8	Artemis Hysa	Msc	6	Teuta Kodra		Akademia sh.p.k
9	Ina Osmani	Msc				

☒ Scientific Council for Study Program / Coordinators of study program (Table 3)

Table 3

Name Surname	Title/Degree	Duty at the Scientific Council
Sokol Dervishi	Prof. As	Head of Dep
Anna Yunitsyna	Dr	Member
Odeta Manahasa	Dr	Member
Edmond Manahasa	Dr	Member

☒ Data for the qualification of academic staff for the study program (Tables 4)

Tables 4

Academic staff for the study program Msc in Architecture for the academic year 2012 - 2013					
EAS (Name Surname)	Title/Degree	ASC (Name Surname)	Title/Degree	Institution where they work full time	
1	Sokol Dervishi	Dr			
2	Ibr Nase	Dr			
3	Ahmed Fatih Ersoy	Msc			

Academic staff for the study program Msc in Architecture for the academic year 2013 - 2014					
EAS (Name Surname)	Title/Degree	ASC (Name Surname)	Title/Degree	Institution where they work full time	
1	Sokol Dervishi	Prof.As			
2	Frida Pashako	Dr			
3	Albana Hahli	Dr			

Academic staff for the study program Msc in Architecture for the academic year 2014 - 2015						
EAS (Name Surname)	Title/Degree	ASC (Name Surname)	Title/Degree	Institution where they work full time		
1	Sokol Dervishi	Prof.As	1	Enana Shkreli	Msc	Co Albania 2
2	Frida Pashako	Dr	2	Ernest Shtepani	Msc	Ministria e zhvillimit Urban
3	Anna Yunitsyna	Dr	3	Ledia Tota	Msc	Agjencia e zhvillimit te territori
4	Albana Hahli	Dr				
5	Edmond Manahasa	Msc				
6	Egin Zeka	Msc				
7	Jurjin Hajro	Msc				

[Signature]

**Academic staff for the study program Msc in Architecture
for the academic year 2015 - 2016**

EAS (Name Surname)	Title/ Degree	ASC (Name Surname)	Title/ Degree	Institution where they work full time
1 Sokol Dervishi	Prof.As	1 Frida Pashako	Dr	Bashkia Tiranë
2 Anna Yunitsyua	Dr	2 Ernest Shtepani	Msc	Ministria e shëllimit Urban
3 Artan Hysa	Msc	3 Pirro Vaso	Msc	Not employed
4 Desantila Hysa	Msc			
5 Jurim Hajro	Msc			

**Academic staff for the study program Msc in Architecture
for the academic year 2016 - 2017**

EAS (Name Surname)	Title/ Degree	ASC (Name Surname)	Title/ Degree	Institution where they work full time
1 Sokol Dervishi	Prof.As	1 Frida Pashako	Dr	Bashkia Tiranë
2 Anna Yunitsyua	Dr	2 Ernest Shtepani	Msc	Ministria e shëllimit Urban
3 Egin Zeka	Msc	3 Pirro Vaso	Msc	Not employed
4 Desantila Hysa	Msc	4 Albana Halili	Dr	Universiteti "A. Moisiu", Durrës
5 Odeta Manahasa	Dr	5 Jurim Hajro	Msc	Commonsense studio
6 Ina Hysa	Msc			

**Academic staff for the study program Msc in Architecture
for the academic year 2017 - 2018**

EAS (Name Surname)	Title/ Degree	ASC (Name Surname)	Title/ Degree	Institution where they work full time
1 Edmond Manahasa	Dr	1 Frida Pashako	Dr	Bashkia Tiranë
2 Sokol Dervishi	Prof.As	2 Ernest Shtepani	Msc	Ministria e shëllimit Urban
3 Anna Yunitsyua	Dr	3 Pirro Vaso	Msc	Not employed
4 Odeta Manahasa	Dr	4 Albana Halili	Dr	Universiteti "A. Moisiu", Durrës
5 Narton Mulleti	Dr	5 Jurim Hajro	Msc	Commonsense studio
6 Erion Luga	Dr	6 Dorian Tyrtace	Msc	Burokol sh.p.k
7 Ena Mustafaraj	Dr	7 Erika Sula	Msc	ZRPP
8 Enketa Sogutiu	Dr	8 Teuta Kodra	Msc	Akademia sh.p.k
9 Julinda Keçi	Dr	9 Enketa Alimadhi	Msc	
10 Artan Hysa	Msc			
11 Egin Zeka	Msc			
12 Desantila Hysa	Msc			
13 Ina Hysa	Msc			
14 Armando Demas	Msc			
15 Artemis Hysa	Msc			

(note: Tables will be completed for the academic years in which the program was active)

Summary of Staff Qualification and ratios among them (Table 5)

Table 5

Title/ Degree	Academic staff for the study program					
	academic year 2012 - 2013			academic year 2013 - 2014		
	EAS	ASC	Ratio EAS / ASC	EAS	ASC	Ratio EAS / ASC
Professors						
Associate Professors						
Dr/PhD	2	0	2/0	1	0	1/0
Staff in the process of PhD	1	0	1/0	2	0	2/0
Professor Assistants (Msc)						
Administrative Staff	4	0	4/0	4	0	4/0

Title/ Degree	Academic staff for the study program					
	academic year 2014 - 2015			academic year 2015 - 2016		
	EAS	ASC	Ratio EAS / ASC	EAS	ASC	Ratio EAS / ASC
Professors						
Associate Professors	1	0	1/0	1		1/0
Dr/PhD	3	0	3/0	1	1	1/1
Staff in the process of PhD	3	1	3/1	3	1	3/1
Professor Assistants (Msc)		2	0/2		1	0/1
Administrative Staff	4	0	4/0	4		4/0

Title/ Degree	Academic staff for the study program					
	academic year 2016 -2017			academic year 2017 - 2018		
	EAS	ASC	Ratio EAS / ASC	EAS	ASC	Ratio EAS / ASC
Professors						
Associate Professors	1		1/0	1		1/0
Dr/PhD	2	2	2/2	8	2	8/2
Staff in the process of PhD	3	1	3/1			
Professor Assistants (Mac)		2	0/2	6	7	6/7
Administrative Staff	4	0	4/0	4		4/0

Handwritten signature

(note: Tables will be completed for the academic years in which the program was active)

Data by Age of staff (Tables 6)

Tables 6

For the academic year 2012 - 2013											
Title/ Degree	Number of EAS and ASC with age:										
	(25-35)		(36-45)		(46-55)		(56-65)		(66-68)		
	EAS	ASC	EAS	ASC	EAS	ASC	EAS	ASC	EAS	ASC	
Professors											
Associate Professors											
Dr/PhD	2										
Staff in the process of PhD			1								
Professor Assistants (Mac)											
Administrative Staff	3		1								

For the academic year 2013 - 2014											
Title/ Degree	Number of EAS and ASC with age:										
	(25-35)		(36-45)		(46-55)		(56-65)		(66-68)		
	EAS	ASC	EAS	ASC	EAS	ASC	EAS	ASC	EAS	ASC	
Professors											
Associate Professors	1										
Dr/PhD	2										
Staff in the process of PhD											
Professor Assistants (Mac)											
Administrative Staff	3		1								

For the academic year 2014 - 2015											
Title/ Degree	Number of EAS and ASC with age:										
	(25-35)		(36-45)		(46-55)		(56-65)		(66-68)		
	EAS	ASC	EAS	ASC	EAS	ASC	EAS	ASC	EAS	ASC	
Professors											
Associate Professors	1										
Dr/PhD	3										
Staff in the process of PhD	3	1									
Professor Assistants (Mac)		2									
Administrative Staff	4										

For the academic year 2015 - 2016											
Title/ Degree	Number of EAS and ASC with age:										
	(25-35)		(36-45)		(46-55)		(56-65)		(66-68)		
	EAS	ASC	EAS	ASC	EAS	ASC	EAS	ASC	EAS	ASC	
Professors											
Associate Professors	1										
Dr/PhD	1	1									
Staff in the process of PhD	0	1									
Professor Assistants (Mac)								1			
Administrative Staff	4										

Handwritten signature

For the academic year 2015 - 2017

Number of EAS and ASC with age:

Title/ Degree	(25-35)		(36-45)		(46-55)		(56-65)		(66-68)	
	EAS	ASC	EAS	ASC	EAS	ASC	EAS	ASC	EAS	ASC
	Professors									
Associate Professors			1							
Dr/PhD	2	1		1						
Staff in the process of PhD	3	1							1	
Professor Assistants (Msc)		1								
Administrative Staff	4									

For the academic year 2017 - 2018

Number of EAS and ASC with age:

Title/ Degree	(25-35)		(36-45)		(46-55)		(56-65)		(66-68)	
	EAS	ASC	EAS	ASC	EAS	ASC	EAS	ASC	EAS	ASC
	Professors									
Associate Professors			1							
Dr/PhD	4	1	4	1						
Staff in the process of PhD										
Professor Assistants (Msc)	5	6	1	1						
Administrative Staff	4									

(note: Tables will be completed for the academic years in which the program was active)

Faculty facilities (Table 7)

Facilities for staff:	Number	Square (m ²)
Office for Dean / Vice Dean	5	285
Office for the Administrator	1	36
Office for departments coordinator	2	61
Office for departments/ research centers	12	328
Office for Academic Staff	40	620
Office for finance	2	37
Office for IQAI	1	50
Meeting rooms	2	75
WC for staff	35	212
Premises for service personnel	11	
Total		1694
Classrooms (lectures)	5	752
Classrooms (seminars)	17	1545
Premises for promotion activities	1	128
Classrooms (professional practice)	2	258
Laboratories for courses	3	233
Informatics laboratories	2	175
Internet room	2	152
Library hall	1	322
Student information office	2	71
Office for photocopying, bookshop etc	1	65
Corridors/hall	25	2707
Sports premises	5	463
Premises for third parties	1	66
Recreation premises such as cafeteria /fast food/restaurant	1	337
Premises for the activities of the Student Council	1	30
WC for students	54	327
Total		9335
Normatives m² / per person		23.7

Table 7/1, Number of PC, printers, projectors, videoprojectors, scanners

Number of PC per doctoral students	120
Number of PC furnished labs per students	4
Number of PC for academic staff	87
Number of PC for administration	53
Number of printers for each one	15
Number of photocopying machines for each one	15
Number of head projectors	1
Number of video projectors	27
Number of scanners	10

Agus

Income and various financing of University EPOKA, data over the six years , in ALL (Table 8) Table 8

RESOURCES FROM:	2012-2013	2013-2014	2014-2015	2015-2016	2016-2017	2017-2018
PUBLIC FUNDS:						
Central government/ Local government						
NON-PUBLIC FUNDS:						
Grants on research and contracts				5.825.333	6.329.204	31.808.666
Consultations, services						
Tuition and ther student fees	217.569.330	225.594.600	267.196.734	314.762.455	347.539.756	405.492.395
Sponsorships						
Training services (life-long qualifications)						
Donations, assurance activities, foundations etc.						
Commercial activities (cafeterias, fast-food, residential quarters)				1.237.299	1.330.000	1.330.000
Total	217.569.330	225.594.600	267.196.734	321.823.287	355.258.960	438.634.061

Expenditure of EPOKA University (in the past 6 years), in ALL (Table 8/1)

lu

	2012-2013			2013-2014			2014-2015			2015-2016			2016-2017			2017-2018		
	salaries	expenditure	investment	salaries	expenditure	investment	salaries	expenditure	investment	salaries	expenditure	investment	salaries	expenditure	investment	salaries	expenditure	investment
Grants on research and contracts		30,856,000			36,229,200			38,224,200			27,986,924			34,140,036			53,200,000	
Tuition and ther student fees	93,216,774	79,490,376	72,086,000	100,355,150	80,806,810	72,884,000	105,668	85,194,480	72,884,000	135,797,123	60,309,512	25,930,744	146,687,562	66,433,500	28,523,845	155,610,000	71,221,500	30,590,000
Commercial activities (cafeterias, fast-food, residential quarters)		11,970,000			12,768,000			13,965,000			5,478,004			6,075,831			6,626,867	
Total	93,216,774	122,316,376	72,086,000	100,355,150	128,804,010	72,884,000	105,668	137,383,680	72,884,000	135,797,123	98,855,440	25,930,744	146,687,562	106,599,367	28,523,845	155,610,000	131,048,367	30,590,000

Incoming and various financing of Integrated Second Cycle study program in Architecture, during the last six years (Table 9)

Table 9

RESOURCES FROM:	2012-2013	2013-2014	2014-2015	2015-2016	2016-2017	2017-2018
Tuition and ther student fees	39,740,400	54,583,200	63,311,200	84,747,600	106,293,600	107,730,000
Total	39,740,400	54,583,200	63,311,200	84,747,600	106,293,600	107,730,000

Expenditure of Integrated second cyle study program in architecture (in the past 6 years), in ALL (Table 9/1)

Costs (%)	2012-2013			2013-2014			2014-2015			2015-2016			2016-2017			2017-2018		
	salaries	expenditure	investment	salaries	expenditure	investment	salaries	expenditure	investment	salaries	expenditure	investment	salaries	expenditure	investment	salaries	expenditure	investment
Tuition and ther student fees	15,896,160	7,683,808	6,055,808	21,833,280	9,804,714	7,636,743	33,324,480	16,140,084	11,863,040	33,899,040	8,267,229	3,287,387	42,517,440	10,245,842	4,033,308	43,092,000	11,292,000	4,437,438
Total	15,896,160	7,683,808	6,055,808	21,833,280	9,804,714	7,636,743	33,324,480	16,140,084	11,863,040	33,899,040	8,267,229	3,287,387	42,517,440	10,245,842	4,033,308	43,092,000	11,292,000	4,437,438

Database for members of IQAU (Table 10)

Table 10

Handwritten signature

	Members of IQAU	Position in IQAU	How long has this task
1	Prof. Dr. Teoman Duman	Chair	Dec 2017-current
2	Dr. Timothy Hagen	Member	Dec 2017-current
3	Dr. Julian Hoxha	Member	Dec 2017-current
4	Dr. Alba Kruja	Member	Dec 2017-current
5	Dr. Odeta Manahassa	Member	Dec 2017-current
6	Dr. Reina Shchi	Member	Dec 2017-current
7	Mr. Altin Bora	Member	Dec 2017-current
8	Mr. Loren Senja	Member	Dec 2017-current
9	Mr. Arjan Shahini	External Member	Dec 2017-current
10	Mr. Idaver Sherifi	Member (Alumni)	Dec 2017-current
11	Ms. Qamile Zdrava	Member (vice president on IQAU, student council)	Dec 2017-current
12	Ms. Flogerta Hasanaj	IQAU/coordinator	Dec 2017-current

Handwritten signature

Table 11

The curriculum of the study program for Msc in Architecture (Table 11)

Year I Subject/Modules	semester	ECTS	Teaching Hours of student's work						In auditorium	Independent work	Total	Exams
			Lecture		Seminar		Independent work					
			ECTS	In auditorium	ECTS	In auditorium						
1	1	12	4	64	36	8	128	72	192	300	-	
2	1	4	2	32	18	2	32	18	64	100	2	
3	1	4	4	48	52	-	-	-	48	100	2	
4	1	4	2.7	32	35	1.3	16	17	48	100	2	
5	1	6	6	64	86	-	-	-	64	150	2	
6	2	12	4	64	36	8	128	72	192	300	-	
7	2	4	2	32	18	2	32	18	64	100	2	
8	2	4	4	48	52	-	-	-	48	100	2	
9	2	5	2	36	14	3	36	39	72	125	2	
10	2	5	5	64	61	-	-	-	64	125	2	
Total		60	35.7	484	408	24.3	372	236	856	1500	16	

Year II Subject/Modules	semester	ECTS	Teaching Hours of student's work						In auditorium	Independent work	Total	Exams
			Lecture		Seminar		Independent work					
			ECTS	In auditorium	ECTS	In auditorium						
1	1	12	6	64	86	6	64	86	128	300	-	
2	1	6	1.9	32	16	4.1	32	70	64	180	2	
3	1	4	4	48	52	-	-	-	48	100	2	
Total		22	12.9	144	154	10.1	96	156	240	580	4	

Signature

Signature

4	Building Materials (EAS)	1	4	4	48	52	-	-	48	52	100	2
5	History of Art and Architecture I (EAS)	1	4	4	48	52	-	-	48	52	100	2
6	Architectural Design II I (EAS) (ASC)	2	12	6	64	86	6	64	128	172	300	-
7	History of Art and Architecture II (EAS)	2	4	4	48	52	-	-	48	52	100	2
8	Structure Analysis(ASC)	2	4	4	48	52	-	-	48	52	100	2
9	Landscape Design(ASC)	2	4	4	48	52	-	-	48	52	100	2
10	Environmental Design Studio (EAS)	2	6	1.9	32	15	4.1	32	70	86	150	2
	Total		60	38.3	356	416	14.2	224	280	704	1300	16

Year III Subject/Module	Semester	Teaching Hours of student's work												Independent work	In auditorium	Total	Exams				
		Lecture			Seminar			Lab			Practice										
		ECTS	In auditorium	Independent work	ECTS	In auditorium	Independent work	ECTS	In auditorium	Independent work	ECTS	In auditorium	Independent work								
1	Summer Practise(EAS)	2																50	-		
2	Architectural Construction Project (EAS)	10	64	36	86	64												128	122	250	
3	Urban Design I (ASC)	8	48	77														48	77	125	1
4	History of Art and Architecture III (EAS)	4	48	52														48	52	100	2
5	Structural Design (ASC)	5	48	77														48	77	125	2
6	Historical Environment and Conservation (ASC)	4	48	52														48	52	100	2
7	Architectural Design IV (EAS)	10	64	36	86	64												128	122	250	-
8	Urban Design II (ASC)	5	32	28			3.6	32		58								64	86	150	1
9	Building Construction Management (ASC)	5	48	52	9	16												64	61	125	2
10	Studio of Conservation and Restoration (ASC)	5	32	18	43	32												64	61	125	1
11	Non-Technical elective (ASC)	4	48	52														48	52	100	2
	Total	60	38.4	480	480	16	176	224	3.6	58								738	762	1500	13

Signature

Signature

Architectural design field

Year IV Subject/Modals	Semester	ECTS	Teaching Hours of student's work						In auditorium	Independent work	Total	Exams		
			Lecture		Seminar		Lab							
			ECTS	In auditorium	ECTS	In auditorium	ECTS	In auditorium					ECTS	In auditorium
1	Summer Practice (EAS)													
2	Advanced Design Studio I (EAS) (EAS) (ASC)	1	12	6	64	86	86	6	64	86	128	172	300	
3	Design Methods (EAS) (EAS) (ASC)	1	6	4.5	48	64	64	1.5	16	22	64	86	180	1
4	Elective Course 1	1	6	6	48	102		-			48	102	150	1
5	Elective Course 2	1	6	6	48	102		-			48	102	150	1
6	Advanced Design Studio II (EAS) (EAS) (ASC)	1	12	6	64	86	86	6	64	86	128	172	300	-
7	Case Studies in Architectural Criticism (EAS) (ASC)	2	6	4.5	48	64	64	1.5	16	22	64	86	150	1
8	Elective Course 3	1	6	6	48	102		-			48	102	150	1
9	Elective Course 4	1	6	6	48	102		-			48	102	150	1
	Total		60	48	416	708	708	15	160	216	576	924	1800	

Year V Subject/Modals	Semester	ECTS	Teaching Hours of student's work						In auditorium	Independent work	Total	Exams		
			Lecture		Seminar		Lab							
			ECTS	In auditorium	ECTS	In auditorium	ECTS	In auditorium					ECTS	In auditorium
1	Supervised Independent Study and Research (EAS)	1	12	12	80	220								
2	Special Topics in architectural Design (EAS)	1	6	6	48	102					48	102	180	1
3	Elective Course 5	1	6	6	48	102					48	102	180	1
4	Elective Course 6	1	6	6	48	102					48	102	180	1
5	Master Thesis (EAS)	1	30	30	0	750						750	1500	1
	Total		60	60	224	1276					224	1276	1500	5

Approved

[Signature]

Building Technology field

Year IV Subject/Module	Semester	ECTS	Teaching Hours of student's work						In auditorium	Independent work	Total	Exams			
			Lecture			Seminar							Lab		
			ECTS	In auditorium	Independent work	ECTS	In auditorium	Independent work					ECTS	In auditorium	Independent work
1	1														
2	1	12	6	64	86	6	64	86							
3	1	6	4.5	48	64	1.5	16	22							
4	1	6	6	48	102	-									
5	1	6	6	48	102	-									
6	2	12	6	64	86	6	64	86							
7	2	6	4.5	48	65	1.5	16	22							
8	2	6	6	48	102	-									
9	2	6	6	48	102	-									
Total		60	45	416	708	15	160	216	576	924	1800	8			

Year V Subject/Module	Semester	ECTS	Teaching Hours of student's work						In auditorium	Independent work	Total	Exams			
			Lecture			Seminar							Lab		
			ECTS	In auditorium	Independent work	ECTS	In auditorium	Independent work					ECTS	In auditorium	Independent work
1	1	12	12	80	220										
2	1	6	6	48	102	-									
3	1	6	6	48	102	-									
4	1	6	6	48	102	-									
5	1	30	30	0	750										
Total		60	60	224	1276				224	1276	1500	5			

Signature

Signature

Curriculum distributed according to Formation of Activities (A-F) (Table 12)

Table 12

Curriculum of Msc (integrated) in Architecture			
Type of Activity (A-F)	Subjects/discipline	Credits	Total
Activities in general formation disciplines (A)	Basic Design	12	56
	Graphic Communication	4	
	Introduction to Architecture I	4	
	Introduction to Architecture II	4	
	Graphic Communication II	4	
	History of Art and Architecture I	4	
	History of Art and Architecture II	4	
	Design Methods	6	
	Case Studies in Architectural Criticism	6	
	History of Art and Architecture II	4	
	Basic Mathematics	4	
	Activities in characterizing disciplines (B)	Introduction to Architectural Design	
Building Construction Technology I		5	
Building Construction Technology II		6	
Architectural Design I		12	
Architectural Design II		12	
Landscape Design		4	
Environmental Design Studio		6	
Architectural Construction Project		10	
Urban Design I		5	
Historical Environment and Conservation		4	
Architectural Design IV		10	
Urban Design II		6	
Advanced Design Studio I		12	
Advanced Design Studio II		12	
Studio of Conservation and Restoration		5	
Supervised Independent Study and Research		12	
Special Topics in architectural Design		6	
Activities in similar or / and integrative disciplines , related to characterizing disciplines (C)		Statics and Strength of Materials	4
	Building Materials	4	
	Structure Analysis	4	
	Structural Design	5	
	Building Construction Management	5	
Activities in Elective disciplines (D)	Elective Course 1	6	36
	Elective Course 2	6	
	Elective Course 3	6	
	Elective Course 4	6	
	Elective Course 5	6	
	Elective Course 6	6	
Other formation knowledge such as foreign languages, informatics, presentations, internship or practice etc. (E)	Non-Technical elective	4	17
	Development of Reading and Writing Skills in English I	6	
	Development of Reading and Writing Skills in English II	5	
	Summer Practice	2	
Diploma thesis (F)		30	300

Note: The SER have some incorrect numbers at part "A" and "B" Institution declare: A working group is dealing with the updating of the curricula according to the Decision of the Council of Ministers No. 41 dated 24.01.2018

Changes in the curriculum, compared to licensed/accredited program (Table 13)

Table 13

Year V Subject/Module	Semester	ECTS	Teaching Hours of student's work												Total	Exams	
			Lecture			Seminar			Lab			Practice					Independent work
			ECTS	In auditorium	Independent work	ECTS	In auditorium	Independent work	ECTS	In auditorium	Independent work	ECTS	In auditorium	Independent work			
1	Basic Design	10	4	64											72	264	1
	Basic Design (changed)	12	4	64	36	8	128	72							108	300	
	Calculus 1 (was)	5	5	80	56										80	136	1
2	Basic Mathematics (changed)	4	2.7	32	35	1.3	16	17							48	100	1
	Development of Reading and Writing Skills in English I (Was)	5	5	64	68										64	132	1
3	Development of Reading and Writing Skills in English I (Changed)	6	6	64	86										64	150	1
	Introduction to Architectural Design	10		64	102										128	264	1
4	Introduction to Architectural Design	12	4	64	36	8	128	72							192	300	
	Building Construction Technology 1	4		32	32		32	22							64	108	
5	Building Construction Technology 1	5	2	36	14	3	36	39							72	125	
	Development of Reading and Writing Skills in English II (Was)	5	5	64	68										64	132	1
6	Development of Reading and Writing Skills in English II (Changed)	6	6	64	86										64	150	1
	Architectural Design I (Was)	8		64	40		54	40							128	208	
7	Architectural Design I (Changed)	12	6	64	86	6	64	86							172	300	
8	Architectural Design II	8		64	40		64	40							128	208	

Approved

[Signature]

W. P. ...

☑ Curriculum related to respective academic staff (Table 14)

Table 14

Subject/Module	Responsible lecturer/lecturers	Title/degree qualification	Department	Status EAS or ASC
1 Basic Design	Odeta Manahasa Desanilla Hysa; Ina Dervishi	Dr Msc Msc	Architecture	EAS EAS EAS
2 Graphic Communication I	Anna Yunitsyna; Artan Hysa	Dr Msc	Architecture	EAS EAS
3 Introduction to Architecture I	Odeta Manahasa	Dr	Architecture	EAS
4 Basic Mathematics	Erind Bedalli	Dr.	Computer Engineering	ASC
5 Development of Reading and Writing Skills in English I	Enriketa Soguthu	Dr.	Computer Engineering	ASC
6 Introduction to Architectural Design	Odeta Manahasa; Desanilla Hysa; Ina Dervishi	Dr Msc Msc	Architecture	EAS EAS EAS
7 Graphic Communication II	Anna Yunitsyna; Artan Hysa	Dr Msc	Architecture	EAS EAS
8 Introduction to Architecture II	Odeta Manahasa;	Dr	Architecture	EAS
9 Building Construction Technology I	Sokol Dervishi; Artemis Hasa	Assoc. Prof. Dr. Msc	Architecture	EAS
10 Development of Reading and Writing Skills in English II	Enriketa Soguthu	Dr.	Computer Engineering	ASC
11 Architectural Design I	Artan Hysa Piro Vaso Dorian Tytymce	PhD cand. MSc MSc	Architecture	EAS ASC ASC
12 Building Construction Technology II	Sokol Dervishi; Artemis Hasa	Assoc. Prof. Dr. MSc.	Architecture	EAS EAS
13 Statics and Strength of Materials	Arnando Desmaj	PhD cand.	Civil Engineering	ASC
14 Building Materials	Erion Iuga	Assoc. Prof. Dr.	Civil Engineering	ASC
15 History of Art and Architecture I	Edmond Manahasa	Dr	Architecture	EAS
16 Architectural Design II	Artan Hysa Piro Vaso Dorian Tytymce	PhD cand. MSc MSc	Architecture	EAS ASC ASC
17 History of Art and Architecture II	Edmond Manahasa	Dr	Architecture	EAS
18 Structure Analysis	Enea Mustafaraj	Dr.	Civil Engineering	ASC
19 Landscape Design	Dorian Tytymce	MSc	Architecture	ASC
20 Environmental Design Studio	Sokol Dervishi; Artemis Hasa	Assoc. Prof. Dr. Msc	Architecture	EAS EAS
21 Summer Practice at Architectural Studios	Anna Yunitsyna	Assis. Prof. Dr.	Architecture	EAS
22 Architectural Construction Project	Anna Yunitsyna Edmond Manahasa Artemis Hasa	Assoc. Prof. Dr. Dr. PhD cand	Architecture	EAS EAS EAS
23 Urban Design I	Egin Zeka Enkeis Ahmadhi	PhD cand. PhD cand	Architecture	ASC ASC
24 History of Art and Architecture III	Edmond Manahasa	Dr	Architecture	EAS
25 Structural Design	Enea Mustafaraj	Dr.	Civil Engineering	ASC
26 Historical Environment and Conservation	Frida Pashoko	Dr	Architecture	ASC
27 Architectural Design IV	Anna Yunitsyna Edmond Manahasa Artemis Hasa	Assoc. Prof. Dr PhD cand PhD cand.	Architecture	EAS EAS EAS
28 Urban Design II	Egin Zeka	PhD cand.	Architecture	ASC
29 Building Construction	Julinda Koci	Dr.	Civil	ASC

[Signature]

Zigahmich

Subject/Module	Responsible lecturer/lecturers	Title/degree qualification	Department	Status EAS or ASC
Management			Engineering	
30 Studio of Conservation and Restoration	Frida Pashako	Dr	Architecture	ASC
31 Non-Technical Elective				ASC
Module 1: Architectural Design field				
1 Summer Practice at Construction Site	Artemis Hasa	Msc	Architecture	EAS
2 Advanced Design Studio I	Sokol Dervishi Egin Zeka Jurtin Hajro	Assoc. Prof. Dr. PhD cand. MSc	Architecture	EAS EAS ASC
3 Design Methods	Odetta Manahasa Desanattila Hysa Enkela Alimadhi	Dr. PhD cand. PhD cand.	Architecture	EAS EAS ASC
4 Advanced Design Studio II	Sokol Dervishi Egin Zeka Jurtin Hajro	Assoc. Prof. Dr. PhD cand. MSc	Architecture	EAS EAS ASC
5 Case Studies in Architectural Criticism	Edmond Manahasa Ernest Shiepani	Dr. PhD cand	Architecture	EAS ASC
6 Supervised Independent Study and Research	All Staff		Architecture	EAS
7 Special Topics in Architectural Design	Anna Yunisyra Edmond Manahasa Odetta Manahasa Desanattila Hysa Ina Dervishi Artan Hysa	Assist. Prof. Dr. Dr. PhD cand. PhD cand. PhD cand	Architecture	EAS EAS
8 Master Thesis	All Staff		Architecture	EAS
Module 2: Building Technology field				
1 Summer Practice at Construction Site	Artemis Hasa	MSc.	Architecture	EAS
2 Advanced Design Studio I	Sokol Dervishi Egin Zeka Jurtin Hajro	Assoc. Prof. PhD cand. MSc	Architecture	EAS EAS ASC
3 Advanced Structural Systems	Huseyin Bilgin	Assoc. Prof.	Civil Engineering	ASC
4 Advanced Design Studio II	Sokol Dervishi Egin Zeka Jurtin Hajro	Assoc. Prof. PhD cand. MSc	Architecture	EAS EAS ASC
5 Sunlight in Architecture	Sokol Dervishi;	Assoc. Prof.	Architecture	EAS
6 Special Topics in Building Technology	Sokol Dervishi; Artemis Hasa	Assoc. Prof. Dr. Msc	Architecture	EAS EAS
7 Supervised Independent Study and Research	All Staff		Architecture	EAS
8 Master Thesis	All Staff		Architecture	EAS
Module 3: Urban Planning and Design field				
1 Summer Practice at Construction Site				
2 Advanced Design Studio I	Sokol Dervishi Egin Zeka Jurtin Hajro	Assoc. Prof. PhD cand. MSc	Architecture	EAS EAS ASC
3 Urban Planning	Egin Zeka Enkela Alimadhi	PhD cand. PhD cand	Architecture	EAS ASC
4 Advanced Design Studio II	Sokol Dervishi Egin Zeka Jurtin Hajro	Assoc. Prof. PhD cand. MSc	Architecture	EAS EAS ASC
5 Housing Systems	Anna Yunisyra Egin Zeka	Assist. Prof. PhD cand.	Architecture	EAS EAS
6 Special Topics in Urban Planning and Design	Anna Yunisyra Egin Zeka Ina Dervishi Artan Hysa	Assist. Prof. PhD cand. PhD cand. PhD cand	Architecture	EAS EAS

[Handwritten signature]

Approved

Subject/Module	Responsible lecturer/lecturers	Title/degree qualification	Department	Status EAS or ANC
7 Supervised Independent Study and Research	All Staff		Architecture	EAS
8 Master Thesis	All Staff		Architecture	EAS

Load in hours for forms of teaching (Table 15)

Table 15

Study program: Msc in Architecture		
Forms of teaching	Total Hours in the auditorium	
a. Lectures	1960	
b. Seminars	932	
c. Labs	32	
d. Professional Practice	50	
e. Exams	57	
In total	3031	

Forms of control of Knowledge (Table 16)

Table 16

Means of Assessment	Percentage in the overall assessment of the student
Course attendance and active participation	10%
Fulfilment of obligation (lab, course assignments)	30-50%
Tests throughout the semester	0-20%
Final exam	30-60%
In total	100%

Grade awarding system (Table 17)

Table 17

Grade awarding system				
Letter Grade	GPA Value	Points	Albanian Grade System	Description
AA	4.00	90-100	10	EXCELLENT
BA	3.50	85-89	9	EXCELLENT
BB	3.00	80-84	8	SUCCESS
CB	2.50	75-79	8	SUCCESS
CC	2.00	70-74	7	SUCCESS
DC	1.50	65-69	6	ON PROBATION
DD	1.00	60-64	5	ON PROBATION
FD	0.50	50-59	4	FAIL
FF	0.00	00-49	0	FAIL
NA	0.00	00-00	0	FAIL

Engagement of students in the components of the activity of the unit (Table 18)

Table 18

[Signature]

Signature

Scientific activity of the HEI	Number of engaged students
In individual scientific papers of lecturers	15
In scientific projects at the Department-level	45
In scientific projects at the Faculty-level	50
In scientific projects in collaboration with others	47

☑ Quality of enrolled and graduated students (Table 19)

Table 19

Study Program Msc in Architecture	Students enrolled in the first year (for the first time) (a)	Entrance CGPA	Transferred Students during years					Transferred (b)	Total
			Year I	Year II	Year III	Year IV	Year V		
								36	
2011-2012	36	3.51			3		4	47	
2012-2013	43	3.08	1				3	31	
2013-2014	28	3.75	3					60	
2014-2015	60	3.66					1	29	
2015-2016	38	3.60	1		1		2	48	
2016-2017	43	3.60		1		1	4	50	
2017-2018	46	3.75	2	1		1			

☑ Data of the employment of graduate students (Table 20)

Table 20

Study Program Msc in	Total number of graduate students	Total number of employed students (in accordance with their degree qualification)	Total number of employed students (not in accordance with their degree qualification)	Total number of non-employed students
Academic year 2015	1	11	0	
Academic year 2016	25	14	0	

☑ Data on scientific research (Table 21)

Table 21

Planned activities at the individual and institution-level for the last five years		
1.	Number of publications by full-time academic personnel of the HEI	436
2.	Number of acquired research projects	10
	• Internal Research Projects	5
	• Research Projects of PHD STUDENTS	13
3.	Number of implemented projects	27
	Number of scientific activities organized by the HEI	26
4.	Number of participants in scientific activities within the HEI	966
5.	Number of activities connecting scientific research with the teaching process	..
6.	Number of students involved in scientific research	219
7.	Number of National Awards	3
8.		

☑ Data on national and international cooperation (Table 22)

Table 22

Signature

Agg...

Scientific activities at the individual and institution level in the framework of international cooperation during the last five years		
1	Number of participants as partners in national or international projects	27
2	Number of lectures and seminars with foreign lecturers	36
3	Number of participants in trainings abroad in the area of scientific research	0
4	Mobility of students towards and from the HEI	Toward HEI: 2 From HEI: 22
5	Infrastructure in service to scientific research	<ol style="list-style-type: none"> The available literature in the Epoka Library is contemporary, enriched and provided access to all researchers. Online library, Epoka was granted full membership at JSTOR. There are sufficient labs, classrooms, offices, studios and other facilities with electronic equipment and information technology (CE LAB, CEN LAB, ECE LAB) Computers located in the laboratories contain all the necessary software, programs and packages needed in specific social sciences researches such as: Windows, MS Office, Adobe Reader, SPSS, E-Views 9, STATA etc. Qualified environment. Financial Support on travel and other accommodations for participation in person in scientific activities. Publication based type financial support
6	Number of participants in scientific activities and presentations outside the HEI/abroad	14
7	Number of International Awards in the area of scientific research.	4

Communication and cooperation with other state institutions, professional organizations, business community, labor market and other social actors important for higher education (Table 23)

Table 23

Cooperating Institutions and Organizations		Liqit i bashkëpunimit
1	"Lazër Qarakaçi" University of Shkodra	MoU
2	"Aleksander Moisiu" University of Durrës	MoU
3	California University in Pennsylvania	MoU
4	Nicolaus Copernicus University	MoU
5	"Hëna e Fiste" (Beder) University	MoU
6	Zaman/Kamboshia University	MoU
7	University of Salerno	MoU
8	Cassino and Southern Lazio University	MoU
9	American University in the Emirates	MoU
10	Sapienza University of Rome	MoU
11	State University of Baku - Azerbaijan	MoU
12	International Black Sea University	Cooperation Protocol
13	KU Bolashak University	MoU
14	Qafqaz University	MoU
15	Rivnessi College	MoU
16	Palis University	MoU
17	Marin Barleti University, SHILAJ	MoU
18	University of Benedituce	MoU
19	University of Applied Sciences - Fachhochschule Mainz/Germany	Agreement for academic exchange
20	Illinois Institute of Technology - USA	MoU
21	International University of Ataturk Alamo- Bishkek/ Kyrgyzstan	MoU

[Signature]

Zeffense

22	International Balkan University Skopje/Macedonia	Cooperation agreement and MoU
23	Burch International University - Sarajevo / Bosnia/Herzegovina	Partnership
24	Leeds Metropolitan University - UK	MoU
25	Sam Houston State University - Texas/ USA	MoU
26	Lumina University of South East Europe - Bucharest / Romania	Cooperation agreement
27	Texas Pavement Preservation Center (University of Texas in Austin/Archibong faculty Austin) - Texas/USA	MoU
28	Polytechnic University of Bari /Fac. of Architecture & Engineering- Bari/ Italy	MoU
29	University of Pristina/ Fac. of Architecture & Engineering - Pristina/ Kosovo	Study abroad Agreement
30	American University in Bulgaria- Bulgaria	MoU
31	Tallinn University of Technology	MoU
32	Tirana University	Partnership
33	Business School EADA	MoU
34	TED University, Turkey	MoU
35	Istanbul Technical University, Turkey	MoU
36	Yildiz Technical University, Turkey	MoU
37	Gedik University, Turkey	MoU
38	Istanbul University, Turkey	Erasmus+
39	The International University of Logistics and Transport, Wroclaw, Poland	Erasmus+
40	Polytechnic University of Bari, Italy	Erasmus+
41	Universitatea Tehnica "Gheorghe Asachi" din Iasi, Romania	Erasmus+
42	Gdansk University of Technology, Poland	Erasmus+
43	University of Piresti, Romania	Erasmus+
44	Hochschule Mainz - University of Applied Sciences, Germany	Erasmus+
45	Middle East Technical University, Turkey	Erasmus+
46	Regional Educational Directorate of Korca	MoU
47	Institute of Public Administration for Turkey and the Middle East	Cooperation
48	British Council Albania	MoU
49	Ministry of Social Welfare and Youth	MoU
50	Ministry of Education and Sports	MoU
51	Ministry of Innovation and Public Administration	MoU
52	Ministry of Urban Development and Tourism	MoU
53	Conference of Rectors	MoU
54	National Territorial Planning Agency (AKPI)	MoU
55	Municipality of Tirana	Cooperation
Professional organizations		
1	CHWB Cultural Heritage without Borders	MoU
2	Chamber of Commerce and Industry	Project
3	CISCO Network Academy	MoU
4	Albanian Chamber of International Trade and Development (ACTAD)	MoU
5	Akademia Diplomatike Shqiptare	MoU
6	Albanian Confindustry (KISIT)	MoU
7	Albanian Investment Development Agency (AIDA)	MoU
8	INSTAT	
Business community, labor market		
1	Abcom	
2	Agna Group	
3	AK Design Construction	Summer Practice
4	Albania Business Partner Summer Practice 5 Albania Institute for International Studies	Summer Practice
5	Albania Business Partner Summer Practice 5 Albania Institute for International Studies	Summer Practice
6	ARstar	Summer Practice
7	Alitelcom & Eagle Mobile	Summer Practice
8	Atlantic Council of Albania	Summer Practice
9	Banka Kombetare Tregtare	Summer Practice
10	Banka Qendrore e Shqipërisë	Summer Practice
11	Basoljia Shkodër	Summer Practice
12	Coca-Cola	Summer Practice
13	Communication Progress	Summer Practice
14	Credins Bank	Summer Practice
15	Deloitte Albania & Kosova	Summer Practice
16	Dominusoft	Summer Practice
17	Drejtoria e Tregimeve Shkodër	Summer Practice
18	Ernst & Young	Summer Practice
19	Gener 2	Summer Practice
20	Gjergji Kompiuter	Summer Practice
21	Intesa Sanpaolo Bank	Summer Practice
22	Kontakt Shpk	Summer Practice

[Signature]

Handwritten signature

23	Marketing & Distribution	Summer Practice
24	NBO Bank	Summer Practice
25	KQA	Summer Practice
26	ProCredit Bank	Summer Practice MoU
27	Raiffeisen Bank	Summer Practice
28	Signi	Summer Practice
29	Signa	Summer Practice
30	Sistech Albania	Summer Practice
31	Société General Albania Bank	Summer Practice
32	TSI Consulting	Summer Practice
33	Telekoma Albania	Summer Practice
34	Tirana Business Park	Summer Practice
35	Univox Reklama	Summer Practice
36	Vodafone Albania	Summer Practice
37	Balkatek	MoU
38	UNIVERS-ALB	MoU
39	ProCredit Bank	MoU
40	TED Bank	MoU
41	Communication Progress	MoU
42	DM Consulting Services	MoU
43	Everest IE	MoU

Handwritten signature