

EXTERNAL EVALUATION REPORT
OF PERIODIC ACCREDITATION
FOR MSC IN "ARCHITECTURE" STUDY PROGRAM,
OF "EPOKA" UNIVERSITY

External Evaluation Team:

1. Dr. Gjergji Islami
2. PhD. Manuela Almeida

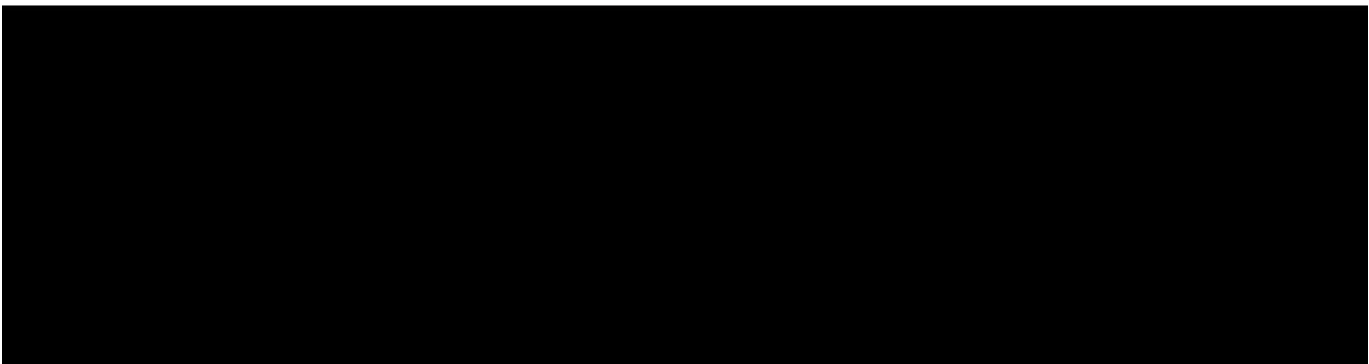


September/2018


Table of contents for the study program	
1	Applicant HEI: "EPOKA" University
2	The faculty offering the study program Faculty of Architecture and Engineering
3	License Order / DCM Decision of Council of Ministers No. 908, dated 26.08.2009
4	Decision of Accreditation Council / First Accreditation Order Decision of the Accreditation Council no. 339, on 08.06.2012 / Order N. 286, dated 06.07.2012
6	Title of study program: Master of Science in "Architecture"
7	Cycle of study: Second cycle
8	Duration of the study program: 2 years
9	Total credits (ECTS): 120 ECTS
10	Form of study (full time / part time / distance education): Full time
11	Language (Albanian / Other): English
12	The program is provided by the institution "EPOKA" University
13	The program is offered in cooperation with other institutions No
14	Joint / double degree No
15	Level in the National Qualifications Framework 7
	Number of students: 1 student (2016-2017) 4 students (2017-2018)

Handwritten signature

Handwritten signature



EXTERNAL EVALUATION REPORT
for study program MSc in "Architecture"



Introduction

Epoka University began its activity during 2007-2008 Academic year with the initial status of "Higher Education School" which was changed in 2012 in the status of "University".

The University is composed of three Faculties:

- Faculty of Architecture and Engineering
- Faculty of Economics and Administrative Science
- Faculty of Law and Social Sciences

The Faculty of Architecture and Engineering is composed of three departments:

- Department of Architecture
- Department of Civil Engineering
- Department of Computer Engineering

In 2017 the University has passed the institutional accreditation from the Albanian Agency for Quality Assurance in Higher Education with the validity until 19/10/2021.

The Master of Science study program in "Architecture" was licensed with DCM No. 908, dated 26.08.2009, as a Master of Science in "Architecture", with the duration of 2 academic years and with 120 ECTS. The study program was accredited with the Order of the Minister of Education and Science No. 286, dated 06.07.2012, based on the Decision of the Accreditation Council No. 339, dated 08.06.2012.

The programs in Architecture were firstly offered in Epoka University in 2008 when a 4 years Bachelor degree (240 ECTS) was approved and then opened. In 2011, in order to become compatible with the Bologna process, the program was reorganized in a 300 ECTS program with 5 years of integrated studies (PICD), concluding with a Master of Science degree.

In 2009, was approved a 2 year Master of Science program for the students that would graduate from the 4 years Bachelor. After the reorganization of the 4 years Bachelor into a 5 years integrated master (In Albanian Language *Program i Integruar i Ciklit të Dytë* PICD) the 2 years Master of Science program became available only to students that started to study architecture in Epoka in the period 2008-2010. Considering this fact, the overall number of students following this program has decreased progressively. In order to continue its activity, the program should become attractive for students that have completed a 3 years Bachelor in Europe and that want to continue their Master education in Albania.

In the last 10 years, the university in general and the Department of Architecture in particular have shown an overall progress by increasing the number of students and academic staff, establishing a campus with a qualitative infrastructure, and consolidating the academic reputation.

External Evaluation Team (EET)

Members of EET:

1. Dr. Gjergji Islami
2. Ph.D. Manuela Almeida



During the course of the procedure, EET was assisted by the ASCAL Technical Coordinators, Renata Qatipi and Ersi Dako.

On 28.08.2018, through the AMS system and with the official letter No. 91/37 Prot., dated 28.08.2018 with the subject "Notification of Submission of Draft External Evaluation Reports", EPOKA University, has been acquainted with the Draft Report on External Evaluation. On 04.09.2018, HEI transmitted through ASCAL AMS system comments regarding the Draft Report on External Evaluation, while they were officially sent by letter No. 261/28 Prot., dated 06.09.2018, "Submission of the comments on the Draft External Evaluation Reports".

The EEG after carefully reading the HEI's comments decided to take into consideration comment 1 and comment 3 and the final evaluation related to comment 3 was changed from "Partially" to "Substantially", while comments 2, 4 and 5 were not taken into consideration and the final evaluation does not change.

ANALYSIS OF FULFILLING THE RECOMMENDATIONS GIVEN BY THE ACCREDITATION COUNCIL IN THE DECISION OF THE FIRST ACCREDITATION

I. Recommendations of the Accreditation Council:

- a) To continue through professional work in the research fields of architecture and urban development.
- b) To continue through devotion the selection of high level students aiming to further professional and academic perfection of students.
- c) To continue through professional perfectionism of student preparation aiming thrice of market competition providing the raising of professionals in the field of architecture.
- d) To ensure that the students of this study program make at the end the test of English language, on the basis of internationally recognized tests.

II. Analysis of fulfilling the recommendations:

- a) Recommendation is fulfilled. The Department of Architecture shows a serious effort in producing qualitative research related to architecture.
- b) Recommendation is not fulfilled/not relevant. This recommendation is not relevant, because the program is serving mainly to students of the former 4 years program that graduated before the reorganization of the studies in 5 years.
- c) Recommendation is fulfilled. The university is showing serious effort to improve the quality of education and to educate architects that are professionally competitive. Nevertheless, this remains a constant objective to fulfil and to improve.
- d) Recommendation is fulfilled. This recommendation in fact has been regulated by the law on higher education. The students provide an English exam certificate in accordance with the legislation.

1. Mission/Goals of study program

Terms of reference: Goals and objectives of the study program, teaching and scientific research, short, mid- and long-term strategies, follow-up and adaptation of objectives and goals over the time, general data on the study program (history, status, number of employees over the years, number of students over the years, study programs for all cycles of study, position of the study program in the national and international context).

Description

Architectural education includes a complex and multidisciplinary formation where research and professional ability are inseparable. The Department of Architecture is offering a formation respecting the basic principles of architectural training in full compatibility with its mission and its development strategy.

See also introduction page for more info on the programs in architecture.

Evaluation according to Standards

Standards/Criterions	Evaluation according to standards
Standard I. 1 - Institution offers study programs in accordance with its mission and purpose.	
<p>Criterion 3 Study programs are designed in accordance with Institution purposes and mission;</p> <p>Criterion 4 Study programs are designed in accordance with labor market needs;</p> <p>Criterion 5 Study programs are designed in accordance with economic development of the country.</p> <p>Criterion 6 Study programs reflect the will of Institution to maintain nation values.</p>	<p>Architectural education is strongly related to the labour market needs as the construction industry and urban development are sectors that are in rapid development in Albania. The education of qualified professionals both in the theoretical and professional formation is an important contribution to the society and matching the mission of higher education institutions in general and "Epoka" University in particular.</p> <p>The program is designed to give a complex formation both relying on theoretical and professional aspects, integrating research to the applied architectural science.</p> <p>The 2 year MSc program is mainly serving to the students of "Epoka" University that have previously graduated from the former 4 years program which has been reorganized. As such, its impact is limited to a small number of individuals but it is still fully compatible with the labour market and the overall development of the country.</p> <p>Architectural education in general is strongly related to the understanding, preserving and promoting the cultural context. Cities, urban and cultural environments, buildings, landscapes and all the forms of tangible or intangible heritage are subject of the education of architects who are culturally trained to identify and to preserve them.</p>
Standard I.2 - Study programs are consistent with institution's development strategy.	
<p>Criterion 1 Study programs are geared to institution's development strategy;</p>	<p>The institutional and department development strategies both promote the development of the quality of teaching and research in the architectural field and</p>

	the related programs.
Standard I.3 - Study programs are offered in accordance with laws and bylaws in force.	
<p>Criterion 1 The content of study programs is in accordance with criteria defined by laws and regulations in force;</p> <p>Criterion 2 Study program naming is consistent with qualifications level achieved and determined by Albanian Qualification Framework.</p>	<p>The program respects in its formal content the legal framework in force. Naming of the program is conform the qualification level referring to the Albanian Qualification Framework.</p> <p>New adaptations of the program are necessary referring to the latest legislative acts introduced during the last year.</p>
Standard I.11 - Institution drafts a development plan for study programs, teaching and learning results.	
<p>Criterion 1 Institution prepares a strategic plan in Institution level for the development and improvement of study programs;</p> <p>Criterion 2 Institution prepares a strategic plan in Institution level to improve teaching and learning results.</p>	<p>The university has drafted a strategic development plan for the period 2018-2020 following the approved plan for the period 2013-2017. The strategic plan is concerned both in improving the overall teaching and learning results and at the same time to strengthen and further develop the programs offered.</p> <p>The strategic plan of the Department of Architecture (2017-2022) is a specific document focusing on the development of architectural education and the Department itself as the base unit that offers the program.</p>
Conclusions of the evaluation:	
<p>The program is well-structured and in accordance with the mission and the development strategy of the institution and contributes to provide highly qualified professionals meeting the labour market demand and the overall national economic development.</p> <p>The standards: are fully met.</p>	

Signature

2. Academic structure of the Faculty / Department (responsible for the study program)

Description

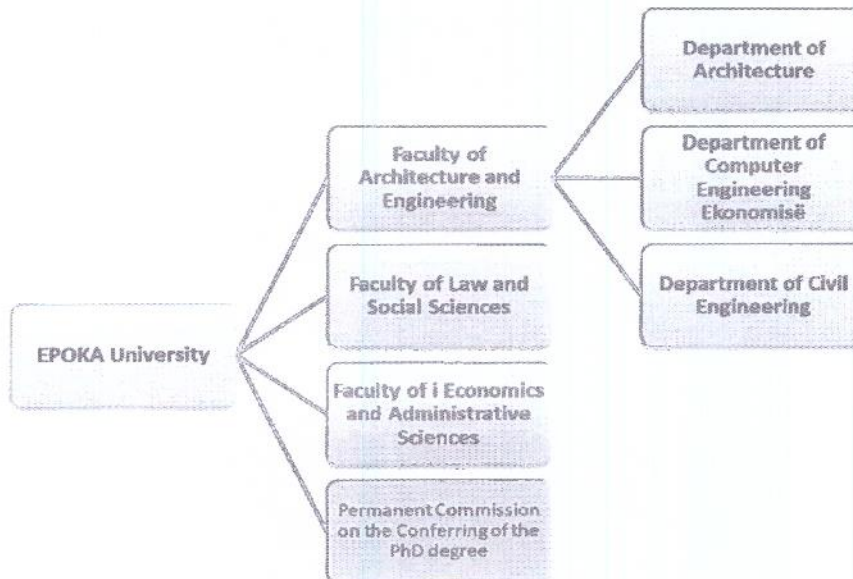
Terms of Reference: The Faculty's academic structure, division into departments, data for academic staff allocation in these core units, its division into Effective Academic Staff (EAS) (full time), Academic Staff with Contracts (ASC) (part time), Administrative Staff (AS), Coordinating teaching with other units.

The Faculty of Architecture and Engineering is divided into three departments: Department of Architecture, Department of Civil Engineering, and Department of Computer Engineering. The total academic staff of the faculty is 23 full time personnel and 22 part time contributors (see detailed data below). There is also administrative staff composed by 4 members.

Measurable indicators:

- Academic structure of the Faculty (organogram)

Signature



The structure of the Faculty is organized in accordance to the Law 80/2015.

The academic staff for each base unit: EAS, ASC, AS, Titles/degree qualifications (Table 1)

The Faculty is composed of 23 full time members of the academic staff. 16/23 members have a PhD or belong to the category Professor. In the Faculty of Architecture and Engineering there are also 22 part time contributors in the academic processes of which 12 have an academic Title or Scientific Degree.

List of Effective Academic Staff (EAS) and Academic Staff with Contracts (ASC) in the Departments (Tables 2)

The Department of Architecture has 9 full time members of which 4 have an academic Title or Scientific Degree.

The Dean of the Faculty belongs to the category Professor (Associated Professor).

The Head of the Department of Architecture has a Doctoral degree.

Two other full time staff members have a doctoral degree and belong to the category Lecturer.

All other members hold the position of Assistant Lecturer and they have a MSc degree.

The part time staff of the Department of Architecture is composed out of 8 members, 2 having a Doctoral degree.

Scientific Council for Study Program / Coordinators of study program (Table 3)

The scientific committee of the program is headed by the Dean of the faculty and composed from 3 department members (one of them is automatically the head of the Department of Architecture). All members of the scientific committee have minimum a PhD.

[Handwritten signature]

Evaluation according to Standards:

Standards/Criterions	Evaluation according to standards
Standard II.2 - Institution is organized in accordance with laws and bylaws in force, to accomplish its mission.	
<p>Criterion 1 Institution is organized in order to fulfill its mission;</p> <p>Criterion 2 Institution has at least two Faculties;</p> <p>Criterion 3 Faculty is organized in basic units. Each college has at least three basic units, from which two are departments;</p> <p>Criterion 4 Faculty or Institute of Research and Development consists of 3 basic units at least with well-defined objectives and mission;</p> <p>Criterion 5 Department should be composed of 7 effective members at least as academic staff, 3 of whom at least should have the scientific degree "Doctor."</p>	<p>Epoka University is organized in three Faculties composed of nine Departments (basic units) which cover the study programs and research activity in accordance with its mission.</p> <p>The Departments have a well-defined field of competence and offer study programs in accordance with their mission.</p> <p>The Faculty of Architecture and Engineering has three departments with respectively 9, 7 and 7 members of academic staff each (23 in total).</p> <p>In each department there are respectively 4, 5, 7 members of the academic staff that possess at least a PhD (16 in total).</p> <p>Referring to the information provided for the academic staff during the last 6 years, the Department of Architecture results to have a stable staff which has increased in qualification during the last years. From the actual full time staff, 5/9 are employed in the last six years with a full time contract and 2/9 have contributed for five years during the same period.</p> <p>The part time staff is more flexible but it still has a good stability and continuity.</p> <p>There is an effort to increase the number of qualified academic staff having an Academic Title or Degree. Still more efforts are needed to increase the presence of highly qualified staff.</p>
Standard II.3 - Institution units are engaged directly and devotedly for study programs implementation.	
<p>Criterion 1 Basic and main units are aware of responsibilities they have to realize the study programs;</p> <p>Criterion 2 Basic and main units are involved in necessary academic staff recruitment and evaluation process.</p>	<p>The programs offered by the Faculty of Architecture and Engineering are managed by the specific Departments and they are fully aware of the responsibilities they have.</p> <p>The staff recruitment starts from the Department which specifies the need for vacancies and then continues with an evaluation committee in the level of Faculty. After the evaluation, the procedure passes to the Rector office and to the Administrative Board.</p>
<p>Conclusions of the evaluation:</p> <p>The hierarchic structure of the university is in accordance with Law 80/2015. The structure of the Faculty of Architecture and Engineering has the needed number of academic staff with appropriate qualifications to operate and to manage the offered study programs.</p> <p>The standards: are fully met.</p>	

J. P. ...

[Signature]

3. Academic staff and support staff, for the study program

Left hand

Description

Terms of reference: Data for the qualification of academic staff, ratio of EAS / ASC; ratio of academic staff / administrative staff / student; needs for academic / administrative staff, distribution of workload for academic staff; relationships with other structures outside the time of employment; recruitment criteria of academic staff, etc.

The MSc in "Architecture" program is composed of 12 full time academic staff and 8 members of part time staff. The administrative personnel serving in the program is composed by 4 members. The total number of students is 5, and the ratio between full time academic staff and students is 1 student /2.4 academic staff.

The above data shown are not relevant, considering that the 5 students of the program are part of the same courses within the 5 years architecture program.

The recruitment policy aims in attracting highly qualified academicians with the objective of improving the overall quality of the staff. The teaching workload is considered as high with an average 14-17 hours/week.

Referring to the information provided for the academic staff of the program during the last 6 years, it results that the full time staff shows stability and an increase in qualification during the last years. The part time staff is more flexible but it still has a good stability and continuity.

There is an effort to increase the number of qualified academic staff having an Academic Title or Degree. Still more efforts are needed to increase the presence of highly qualified staff.

Measurable indicators:

- Data for the qualification of academic staff for the study program (Tables 4)

From Table 4 results:

Academic year 2012 -2013 the rate EAS/ASC 3/0 (2 PhD/1 Msc) 100

Academic year 2013 -2014 the rate EAS/ASC 3/0 (1 Prof.As/2 PhD) 100

Academic year 2014 -2015 the rate EAS/ASC 7/3 (1 Prof.As/3 PhD/3 Msc)/(3 Msc) 40

Academic year 2015 -2016 the rate EAS/ASC 5/3 (1 Prof.As/1 PhD/3 Msc)/(1 PhD/2 Msc) 38

Academic year 2016 -2017 the rate EAS/ASC 6/5 (1 Prof.As/2 PhD/3 Msc)/(2 PhD/3 Msc) 45

Academic year 2017 -2018 the rate EAS/ASC 12/8 (2 Prof.As/5 PhD/5 Msc)/(1 PhD/7 Msc) 40

Considering the fact that the students of the 2 years Master follow the same courses and classes with the 5 year program there is an increase of the academic staff during the last 6 years that goes parallel with the increase of the number of students in the 5 years program. On the other hand, the number of qualified academic staff holding an academic Degree or Title results to be constant during the recent years (38-45%). Considering that this is a second cycle program, the ratio of the qualified staff is recommended to be higher.

The academic staff related to the program, at the moment of evaluation consists of 12 full time members and 8 part time. 7/12 members of the full time academic staff have a PhD or a Professorship. 1/8 members of the part time academic staff has a PhD.

- Summary of Staff Qualification and ratios among them (Table 5)



From Table 5 results that the qualified staff is:

Academic year 2012 -2013: Total 3	Category Professor	0	PhD	2 (66%)
Academic year 2013 -2014: Total 3	Category Professor	1	PhD	2 (66%)
Academic year 2014 -2015: Total 10	Category Professor	1	PhD	3 (33%)
Academic year 2015 -2016: Total 8	Category Professor	1	PhD	2 (25%)
Academic year 2016 -2017: Total 11	Category Professor	1	PhD	4 (36%)
Academic year 2017 -2018: Total 20	Category Professor	2	PhD	6 (30%)

Hyderali

As shown from the data above, the number of PhD has been increasing parallel to the number of the staff, while the number of professor remains constant.

More efforts must be made to increase the number of Professors within the program and the overall ratio of the qualified academic staff.

5/12 members of the full time academic staff and 3/8 of the part time staff are in the process of completing their PhD. There are two members of the full time academic staff that belongs to the category professor (S. Dervishi – Assoc. Professor and H. Bilgin – Assoc. Professor). The ratios present a consolidated staff with a perspective of further qualifications. The institution should improve the qualification of the staff in this program, in order that all members have a higher qualification than the offered program (third cycle / PhD).

Data by age (Table 6)

The full time staff consists of young academics under the age of 45 which guarantees a positive trend in the coming years according to expected qualifications.

Contracts of work, duties and rights

The full time contract duration is one year, while the part time one is one semester. Longer contracts for full time staff members would be recommended in order to guarantee a consolidated staff which is devoted to the institutional development.

The duties and rights of the academic staff are specified in the contract and are in accordance with the legislative framework.

Evaluation according to Standards:

Standards/Criteria	Evaluation according to standards
Standard II.1 - Academic, assisting teaching-scientific and administrative staff are engaged to fulfil study programs objectives.	
<p>Criterion 1 The academic, assisting teaching-scientific and administrative staff are engaged to fulfil objectives of study programs and to achieve them;</p> <p>Criterion 2 Academic, assisting teaching-scientific and administrative staff of Institution are engaged in accordance with institution development strategy.</p>	<p>From the site visit, through contacts with staff and students can be noticed that the members of the academic and administrative staff are engaged in accordance with the needs of the program. They have well defined duties and make good efforts in contributing to the program.</p> <p>The university development strategy refers to staff engagement as one of the key elements for the future development of the institution.</p>
Standard II.4 - Academic staff is engaged in designing and implementing institution development policies.	

[Signature]

<p>Criterion 1 Academic staff plays a key role in curriculum drafting and institutional decisions that belong to organization of study programs;</p> <p>Criterion 2 Recruitment of new staff and allocation of teaching load is made in accordance with laws and bylaws in force.</p>	<p>Curricula are drafted in Department base where the full time academic staff is proposing the structure and content of the program.</p> <p>The recruitment of staff follows a step by step procedure that starts from the department. The recruitment and load allocation is considering the legal framework. The class activity load of the full time staff is considered to be relatively high ranging from 14 to 17 hours per week. A lower teaching load would assure more qualitative teaching and research product.</p>
<p>Standard III.1 - Institution follows legal and transparent procedures for personnel recruitment and evaluation.</p>	
<p>Criterion 1 Institution follows legal and transparent proceedings for personnel recruitment in accordance with the statute and regulation;</p> <p>Criterion 2 Academic staff employed with fulltime in second cycle study programs and second cycle integrated study programs comprises at least 70% of academic staff engaged in implementation of respective study programs;</p> <p>Criterion 3 Institution follows legal and transparent procedures for personnel assessment;</p> <p>Criterion 4 Institution maintains a database of personnel recruitment reports, of announcements for jobs, etc..</p>	<p>The recruitment procedure is followed by the Human Resources office. The process starts in the Department, and the selection is made by a commission of three academic members mandated from the Dean. Candidates are evaluated for the documentation presented, interviewed by the commission and they are also required to make a demo lecture if needed. The Rector and then the Administrative Board give the final approval.</p> <p>The full time academic staff apparently covers more than 70% of the total load of the program. It is not easy to determine the exact ratio covered by full time staff, considering that in many subjects, there are two or more instructors dealing with the course activity, and there is no detailed information about the load covered by each of them.</p> <p>The institution keeps records in the Faculty and in the human resources office about the procedures taken from the publication of the vacancies till the final recruitment of staff.</p> <p>The staff after recruitment is then evaluated in the Department and Faculty base and also through the student questionnaire.</p>
<p>Standard III.2 - Academic staff (with scientific degrees and academic titles) covers the Institution needs and have clearly defined responsibilities.</p>	
<p>Criterion 1 Program Manager has at least the title "Associate Professor" or the scientific degree "Doctor" ("PHD") awarded in western universities and academic experience in these universities;</p> <p>Criterion 2 The head of course / module in study programs "Master of Science" has at least the scientific degree "Doctor";</p> <p>Criterion 3 The head and teachers of subject / module in study programs "Professional Master" have at least the scientific degree</p>	<p>The Head of the Department of Architecture holds a PhD and fulfils the needed requirements for the position held.</p> <p>The Head of the Courses in the program belong all minimally to the category Lecturer and hold a PhD.</p> <p>The leading authorities in the university including the Faculty of Architecture and Engineering and the Department of Architecture result to be employed full time in "Epoka"</p>

[Handwritten signature]

[Handwritten signature]

<p>"Doctor" or, diploma "Professional Master" or "Master Science" and a professional experience of at least 5 years in the profession in which this study program is offered;</p> <p>Criterion 4 Rector, Deputy Rector, director and deputy director of interuniversity center, Dean, Vice Dean, Director, Head of department, service supervisor, program supervisor are employed with full time in the institution offering the study program;</p> <p>Criterion 5 Institution provides sufficient personnel for guidance and supervision of professional practices.</p>	<p>University.</p> <p>The professional practice (Summer Practice at Construction Site) is monitored by the Department of Architecture that has the sufficient capacities for the supervision. Although it is an independent work with 0 ECTS, it is a compulsory activity and the students prepare a working Diary which is then evaluated by the Department.</p>
<p>Standard III.5 - Students who attend study programs of the second cycle "Master of Science" or integrated study programs of second cycle have a supervisor for the thesis.</p>	
<p>Criterion 1 Students who attend these study programs have a supervisor for the research work and thesis they prepare for diploma issue at the completion of this cycle of studies;</p> <p>Criterion 2 Supervisor has at least the scientific degree "Doctor";</p> <p>Criterion 3 Supervisor supervises no more than 5 (five) students simultaneously for themes of applied research character (such as those offered in study programs in the fields of natural sciences, medical science, etc..) and no more than 10 (ten) students simultaneously for themes offered in study programs in fields of social and human sciences.</p>	<p>All students that graduate have a thesis supervisor for their graduation project / research. Supervisors assigned for the thesis work as minimum have a PhD.</p> <p>From the data collected in the Department results that staff members supervise a maximum of 5 students for the thesis work.</p>
<p>Standard III.6 - Study-research field in which the supervisor is specialized is consistent with the study field in which the study program is provided and thesis is foreseen to be prepared.</p>	
<p>Criterion 1 Study-research field in which the supervisor is specialized is consistent with the study field in which the study program is provided.</p> <p>Criterion 2 Supervisor has advanced theoretical knowledge and specific research skills in the area in which the study program is provided and in which thesis is anticipated to be drafted.</p>	<p>Considering that supervisors are department members, their specialisation matches the objectives of the program.</p> <p>All supervisors cover fields related to architectural studies deriving from their PhD studies or from their current research work.</p>
<p>Standard III.7 - Institution engages supporting teaching-scientific and administration staff to fulfil its mission.</p>	
<p>Criterion 1 Institution demonstrates an optimal commitment of supporting teaching-research staff for the realization of laboratory classes and maintenance of laboratories and school facilities;</p> <p>Criterion 2 Institution demonstrates an optimal use of human resources for meeting objectives of study programs of second cycle.</p>	<p>There is a balance between teaching and research which is evident in the documentation presented. The facilities and laboratories are well maintained and efficient for the program. The academic staff members are fully engaged to fulfil the objectives of the program.</p>
<p>Standard III.8 - Academic staff carries out the teaching load defined in laws and bylaws</p>	

Refined



in force.	
<p>Criterion 1 Academic staff realizes teaching load as defined in laws and regulations in force;</p> <p>Criterion 2 Teaching load carried out by academic staff in study programs of second cycle and integrated study programs of second cycle and their organization and management are evaluated in teaching classes.</p>	<p>The actual load is calculated in accordance to the Directive on the Teaching Load of the University dated 07.10.2016. According to this document, the weekly load allowed is maximally 16-20 hours. The real teaching load for department members varies in a range from 440 to 550 hours/year. This numbers include only the class activity such as lectures, seminars etc.</p> <p>A decrease in the total teaching load would be considered a positive contribution for the overall performance of academic staff both in teaching and especially in research.</p>
Standard III.9 - Institution has a database for its personnel.	
<p>Criterion 1 Institution has a detailed database for its academic staff members involved in the program and the person responsible for organizing the study program;</p> <p>Criterion 2 Institution possesses a complete list of teaching- scientific support staff, academic and administrative staff for each semester;</p> <p>Criterion 3 Institution defines and publishes criteria and procedures for staff recruitment.</p>	<p>The human resources office holds a detailed database of the staff member contributing for each program, those being academic or administrative, full time or part time. The HR office holds a separate folder for each of the above.</p> <p>The vacancies and the specific criteria are published in the university web page: http://www.epoka.edu.al/news-and-announcements.html</p>
Conclusions of the evaluation:	
<p>The academic staff of the program is well composed and qualified for the specific program in Architecture. There is need for further improvement of the staff qualification in order to assure more candidates from the category Lecturer and Professor. The recruitment procedures aim to select well qualified staff. The young age of the academic staff is promising for further consolidation and qualification.</p> <p>The standards: are substantially met</p> <p>Recommendations:</p> <p>More efforts must be made to increase the number of Professors within the program.</p> <p>A lower teaching load would assure more qualitative teaching and research product.</p>	

4. Facilities for the study program, logistics and other services to the community

Description

Terms of reference: logistics resources and other services delivered on behalf of community Facilities, infrastructure, information technology, libraries, other services for students, residence halls.

"Epoka" University has a campus based infrastructure which is very well structured and equipped. The campus is planned for further extension of the university and it is well organized. The university infrastructure and services offered satisfy all the needs of a program

in architecture and create facilities for the students. For the moment there are no in-campus residences.

2024/2025

Measurable indicators:

Faculty facilities (Table 7)

Referring to the data in Table 7, the Faculty of Architecture and Engineering has 40.2 m2 area per student and 23.7 m2 area per member of the staff. This is a very good overall indicator of the available physical infrastructure for the study programs within the Faculty. At the same time, the infrastructure includes all the necessary spaces for the normal activity of the study program.

Evaluation according to Standards:

Standards/Criteria	Evaluation according to standards
Standard II.5 - Institution provides the necessary infrastructure for implementation of second cycle study programs and integrated study programs of second cycle that it offers.	
<p>Criterion 1 Institution has a permanent location, which means central administrative premises and facilities where teaching activity is conducted;</p> <p>Criterion 2 These facilities are available to Institution for no less than 6 years;</p> <p>Criterion 3 If the study program is offered in more than one building, institution provides efficient management and continuous control for achievement of standards and implementation of educational policies designed for realization of study programs that it offers;</p> <p>Criterion 4 Institution provides sufficient capacities and facilities for implementation of professional practices foreseen for realization of study programs in the fields of health, veterinary, agriculture, technical sciences etc.</p>	<p>“Epoka” University has its own campus, near Mother Teresa Airport in Tirana. The campus is composed by several buildings offering the infrastructure needed for the normal operation of the program.</p> <p>The university is the owner of the buildings and terrain. The masterplan for the future development of the campus includes several new buildings to be built in order to support the enlargement of the university and to provide more services within the campus.</p> <p>Even though the students use different buildings for different courses and activities, this doesn't affect the activity. The campus is well structured to allow a functional layout and efficient management of the activities.</p> <p>The laboratories, studios and the actual infrastructure allow the normal proceeding of the curricular activity by allowing students to achieve practical skills. Other laboratories could be created to further improve the infrastructure related to the formation in architecture such as drawing lab, model making lab, 3d printers, survey lab, environmental physics lab etc. Some of this infrastructure could have a dual impact both in the curricula and research.</p>
Standard V. 1 - Institution makes its library available to students.	
<p>Criterion 1 Institution provides quality textbooks and sufficient auxiliary and modern literature;</p> <p>Criterion 2 The library has sufficient literature that helps the student to conduct successfully the study program, the scientific research project and thesis;</p> <p>Criterion 3 The library has periodicals</p>	<p>The library is well equipped with textbooks and literature related to the program. Such literature is available in hard copy or electronic form, which facilitates the use of the material from the students.</p> <p>A record of the thesis of the students and the list of the research work of the department members are available online and easily accessible.</p>

[Signature]

<p>and electronic library, which contain necessary books or journals to conduct successfully the study program, the scientific research project and thesis;</p> <p>Criterion 4 Program managers have drawn up a detailed plan to increase library items in support of study program, scientific research project and thesis preparation by students, including the budget planned for this purpose;</p> <p>Criterion 5 Library has service hours in accordance with timetable of study programs and needs of students.</p>	<p>The library offers good sources for research and provides also access in online libraries that could help students for their thesis but also the academic staff for their research.</p> <p>The library fund is updated periodically with new entries ordered from the departments to serve the specific programs they offer. Although a detailed plan to increase library items is missing, the basic literature and sources to access it are present and get updated on a regular base.</p> <p>The Library offers daily service from Monday to Friday from 8.00 to 17.30 and on Saturday 9.00-13.00. Considering the Library also as a studying environment, longer operation hours would be helpful to students, especially during the examination period.</p>
--	---

Handwritten signature

Standard V. 2 - Institution makes available to students sufficient labs and appropriate learning facilities.

<p>Criterion 1 Institution indicates that it has adequate number of: labs, classrooms, offices, studios and other facilities with electronic equipment and information technology to carry out the study programs;</p> <p>Criterion 2 Equipment of teaching facilities is suitable for teaching in accordance with program objectives;</p> <p>Criterion 3 Laboratories contain necessary equipment and tools to meet requirements of study programs and to conduct practices provided for by study program in accordance with program goals, and are maintained and improved continuously;</p> <p>Criterion 4 depending on offered study programs, institution has at least a laboratory for each group of lectures which foresee laboratory practices.</p>	<p>The university offers sufficient number of classes, studios, offices, exhibition spaces which are of a very good quality and well equipped for the activities they cover. Electronic equipment such as computers, projectors, smart boards etc. are available and fully functional and accessible both from staff and students. Laboratories cover the basics needs of the program.</p> <p>The computer labs, design studios and the civil engineering lab offer a good base for supporting the program. Considering the particular nature of the program in architecture, further practical knowledge is obtained in construction site visits and in internships.</p> <p>Other laboratories could be created to further improve the infrastructure related to the formation in architecture such as drawing lab, model making lab, 3d printers, survey lab, environmental physics lab etc. Some of this infrastructure could have a dual impact both in the curricula and research.</p>
---	---

Conclusions of the evaluation:

The infrastructure is one of the strongest assets of "Epoka" University, offering a well-organized campus, with a qualitative environment for the academic activity. The infrastructure serving the formation in architecture is well organized, with several design studios that offer very good conditions. Exhibition spaces are also available. The Library is well equipped with the literature needed and with a comfortable studying environment. The Laboratories offer the basics needed for the program but could be enriched to offer some more facilities to the students of architecture.

The standards: are fully met.

Handwritten signature

5. Financing and managing financial resources

Handwritten signature

Description

Terms of reference: funding sources, costs, student cost, financial control, management capacities.

"Epoka" University is part of "Turgut Ozal" sh.a. Its main funding sources derive from the tuition fees that cover almost all the costs. Students cost are considered as relatively high for the average Albanian family income. "Turgut Ozal" sh.a has a management and audit system that controls the financial situation.

Measurable indicators:

- Financial resources, data over the five years (Table 8)

The total income of the University has almost doubled according to 5 years ago. The main income source is the tuition fees paid by the students. During the last three years there is also funding related to research, contracts and commercial activity that in the last year account 8% of the total income.

Other forms of financing such as continuous education and consulting services are still to be considered as a future possible income for the university.

The programs of the Department of Architecture generate about 24% of the total income referring to the last year, and have a progressive increase during the past 5 years.

- Costs (in the past 5 years), according to financing resources, in percentage (Table 9)

The most significant amount spent in the university goes for salaries (about 50%) and the rest refer to expenditures (about 40%) and investments (less than 10%). The profit of the university in the last year results to be around 121 000 000 ALL or about 27% of the total income.

- Cost/per student (for 1 academic year)

In the data given there is no exact calculated cost presented. According to the income and number of students, an approximate yearly cost for 1 student results to be around 380 000 ALL per year.

- Transparency, internal financial audit Report and its results

There is an annual external audit for "Turgut Ozal" sh.a.

- Financial management capacity

Epoka University is part of Turgut Ozal sha and has a financial management in university level and also in the General Directorate of the Turgut Ozal sha.

Evaluation according to Standards:

Standards/Criteria	Evaluation according to standards
Standard II.9 - Institution makes an annual (external and/or internal) audit about the financial situation.	

Handwritten signature

<p>Criterion 1 Audit report presents the entire financial situation for the use of budget made available to implement second cycle study programs and second cycle integrated study programs;</p> <p>Criterion 2 Audit report contains a clear picture of received foreign grants, and related services contracts for implementation of second cycle study programs and second cycle integrated study programs;</p> <p>Criterion 3 Audit report analyzes the use efficiency of revenues from students' fees in order to increase the quality of studies in this cycle of studies.</p>	<p>The annual external audit of "Turgut Ozal" sh.a is dealing with the general financial data of the institution.</p> <p>The audit presents the overall picture that should be further analysed in detail to get data on second cycle programs and on the particular program in architecture.</p>
<p>Standard VI.1 - Institution drafts a financial report on costs of study programs.</p>	
<p>Criterion 1 Institution drafts a report that contains detailed financial data on costs for implementation of study programs, as operational costs, fixed costs of facilities and equipment, etc.;</p> <p>Criterion 2 Institution shows that it has a financial sustainability during conduct of study programs and it has sufficient financial capacities to improve the financial situation and generation of revenues in the future.</p>	<p>A report is prepared from the "Turgut Ozal" sh.a, containing detailed data regarding finances. There is need for a further analysis of these data in the university in order to be able to figure out specific cost related issues for every single program.</p> <p>Judging on the data provided, "Epoka" University has a positive rapid growth in income and a stable financial base.</p>
<p>Conclusions of the evaluation:</p> <p>The university presents a stable financial situation with positive growth over the last years. There is still need to analyse costs and financial data for single study programs in order to be able to control costs and probably to reduce the percentage of the income covered by the tuitions. The university has the possibility to explore also other forms of income by continuous education and consulting services.</p> <p>The standards: are fully met.</p>	

Handwritten signature

6. Internal Quality Assurance System (IQAS)

Description

Terms of reference: Institutionalizing of internal quality assurance system, internal Quality Assurance Unit (QAU), its functioning, self-evaluation and on-going upgrading of quality, outcomes of external evaluation.

"Epoka" University has an established Internal Quality Assurance System. The Permanent Commission of Quality Assurance is responsible about the Quality Assurance Policies and it is supported by the Internal Quality Assurance Office. The Commission is holding periodical meetings and is addressing the quality related issues. Both structures are dealing with the semestral evaluations of the academic staff and with the results of external evaluation.

Measurable indicators:

Handwritten signature

Database for members of IQAU (Table 10)

The Permanent Commission of Quality Assurance (PCQA) is composed of 11 members from whom, 1 external member, 1 Alumni, 1 representative of the student's council and representatives from different faculties. This unit has been reorganized in December 2017 from the former Academic Evaluation and Quality Improvement Board (AEQIB). 5 of the members of the PCQA keep holding their position from the former AEQIB. The composition of PCQA is representing at its best all the main actors related to the academic quality in Epoka University.

Quantitative data for IQAU, as:

- o How many surveys are made with students?
- o How many students were surveyed?
- o How many surveys are processed, and what problems are issued?
- o What have been the next steps?
- o etc.

All the students complete the course instructor evaluation form online. The student cannot access the exam evaluation online prior to completing the questionnaire. Practically some of the students complete the questionnaire after the exam, and the evaluation could derive from, or could influence, the difficulty of the exam.

There are no other periodical surveys with the students being applied at the moment.

All the surveys regarding instructor evaluation are processed electronically and reports and rankings of courses are prepared and are delivered to the Rector's office. There are no evidences of proper measures taken directly related to the result of surveys from the university structures.

Internal quality control

The quality assurance structures are taking care also of the evaluation of the examination results.

Other quality control issues related to teaching and specific programs are part of the daily work of the Faculties and Departments.

Responsibilities in monitoring and quality management, until the department level

Although dealing with quality is a routine work of the Dean and Head of the Department, there is no operational model or methodology for the Quality Assurance within the specific Program or Department.

Self-assessments conducted, and their results

Internal evaluation reports for each program are part of the self-assessment in Department level.

Quality improvement policies, on the basis of periodic self-assessment

The drafting of institutional and department strategies are based on the overall picture created by the self-assessment and the external periodical assessments. Trainings are also used to communicate with the academic staff and to raise the overall quality assurance culture within the university.



It would be also important to make questionnaires to the teaching staff involved in the program. It is important to also have the perspective from the teachers' side and not only from the student's side. It also should be asked to the teaching staff suggestions/measures to improve the quality, based on their experience and point of view. A yearly based discussion should be promoted among the academic staff.

Signature

The results of the audit and external assessment

The results of the external assessment are an important part of the overall quality evaluation and are evaluated by the PCQA. Action plans (apart from strategies) would be an efficient tool to achieve proper results in the quality improvement.

Relevant documentations (Annex)

Evaluation according to Standards:

Standards/Criterions	Evaluation according to standards
Standard I.10 - Institution uses evaluation methodologies, measuring and evaluation instruments for the progress of study programs.	
<p>Criterion 1 Institution uses evaluation methodologies, measuring and evaluation instruments for the progress of study programs;</p> <p>Criterion 2 Institution includes this piece of information in the self assessment it makes in order to achieve the internal quality assurance;</p> <p>Criterion 3 Institution publishes the assessment results and results it aims to achieve;</p> <p>Criterion 4 In order to conduct the assessment, Institution uses indirect or direct methods:</p> <p>Indirect:</p> <ul style="list-style-type: none"> a. Survey: for students who follow study programs, for graduates in these programs in previous academic years or in different cycles of study; b. Surveys assessing didactics, curriculum, learning; c. Conceptual question; d. Interviews; e. etc. <p>Direct:</p> <ul style="list-style-type: none"> a. Outcomes achieved by students in standardized national/international tests (e.g. State exam for regulated professions); b. Hearings in auditorium; c. Outcomes achieved by students in exams assessed with grades / points; d. Outcomes achieved by students in preliminary and final tests, examinations for modules, professional practices; e. Outcomes achieved by students in assessment of tasks performed during the study program conduct (course assignments for analyzing conceptual understanding, presentations, exams, etc.); f. Observations in performance of exercises / 	<p>The annual analysis of the academic activity aims to control and evaluate the progress of the program.</p> <p>Statistical data provided from the student results are also prepared periodically.</p> <p>The info derived from the annual analysis and the exam results serves to prepare the Institutional self-evaluation report prior to each institutional reaccreditation.</p> <p>The internal evaluation reports prepared by the university are published online in: http://acqi.epoka.edu.al/home-internal-evaluation-reports-1479-1480.html</p> <p>Assessments are done through:</p> <p>Indirect methods such as surveys for course and instructor evaluation.</p> <p>Direct methods such as evaluation of the semestral results in a qualitative and quantitative analysis.</p>

Signature

<p>practice;</p> <p>g. Outcomes achieved and quality of research result - thesis;</p> <p>h. Etc..</p>	
<p>Standard I.13 - Institution publishes regularly unbiased, objective, qualitative and quantitative information for internal evaluation.</p>	
<p>Criterion 1 Institution publishes regularly brochures, newsletters, etc., designed and published by Institution for internal evaluation;</p> <p>Criterion 2 Institution posts regularly video audio presentations, etc., on the website for internal evaluation.</p>	<p>The internal evaluation reports are available at the web site of the university.</p> <p>http://aeqi.epoka.edu.al/home-internal-evaluation-reports-1479-1480.html</p> <p>Other activities related to quality assurance are available at the Internal Quality Assurance Office web page.</p> <p>http://aeqi.epoka.edu.al/home.html</p>
<p>Standard II.7 - Institution conducts an annual analysis to assess second cycle study programs and second cycle integrated programs.</p>	
<p>Criterion 1 Institution makes an annual analysis to assess the progress of second cycle study programs and second cycle integrated study programs;</p> <p>Criterion 2 Institution develops policies aimed at improving second cycle study programs and second cycle integrated study programs;</p>	<p>The annual analysis of the academic activity aims to control and evaluate the progress of the program. This is a department based document that includes the annual overview of the programs offered from the specific department, including the second cycle programs.</p> <p>The policies aimed at improving second cycle programs are part of the Department development strategy 2017-2022.</p> <p>http://arch.epoka.edu.al/cat-strategic-plan-2017-2022-1888.html</p>
<p>VIII - INSTITUTION GUARANTEES QUALITY ASSURANCE</p>	
<p>Standard VIII.1 - Institution guarantees quality assurance in realization of study programs.</p>	
<p>Criterion 1 Institution has met institutional standards and is accredited in institutional level before applying for accreditation of study programs;</p> <p>Criterion 2 Institution uses appropriate instruments for quality assurance;</p> <p>Criterion 3 Institution establishes a policy and follows certain procedures for quality assurance and standards of their programs;</p> <p>Criterion 4 Institution uses formal mechanisms for periodic reviewing, approving and supervision of study programs;</p> <p>Criterion 5 Institution aims at raising awareness of its staff and students, who pursue offered study programs, for quality importance and quality assurance in them;</p> <p>Criterion 6 Institution designs and implements a strategy for constant quality improving. Strategy, policy and procedures are published.</p>	<p>Epoka University has been reaccredited in 2017 and has fulfilled the institutional standards required.</p> <p>The university has created a quality assurance system that is efficient in university scale and dealing with the overall policies. The efficiency of such system could be improved by creating a department based quality control that would create a specific methodology related to the specific programs and disciplines.</p> <p>The approving and supervision of the program passes in several steps starting from the department and ending with the university senate.</p> <p>Several trainings and activities organized by the PCQA have been subject of spreading the quality culture in the university.</p>

The overall Institutional Development Strategy covers also the need for continuous quality improvement. Nevertheless, a specific document addressed to quality assurance could be more effective and detailed.

Agj. Përmirësimit

Conclusions of the evaluation:

The University has an active and efficient quality system. The improvement of this system could take into consideration the creation of a department based quality unit, action plans related to quality indicators, and a specific strategic document dedicated to quality assurance.

The standards: are fully met.

STUDENT EDUCATION POLICIES

7. Mission and objectives of Study Program, its organisation

Description

Terms of reference: Mission, goals and objectives of teaching process and scientific research, the short-term, medium-term and long-term strategies, following up and aligning the objectives and aims with timelines, overall data on HE, general information about the HEI (history, status, number of employees over the years, the number of students over the years, programs of study for all study cycles, HEI place in the national and international).

The 2 years MSc. program presents an incompatible format with the Albanian educational system and has been created to resolve the problem of the former 4 years program in Architecture which has been reorganized into a 5 years program. Considering that students completing the 4 years program would carry a Bachelor degree, this program would offer the possibility to obtain a master in 2 more years (practically 1 more year, because 60 ECTS get recognised by the university from the previous program). In this context, this program is designed to last for a few years and then to close or to be transformed due to the lack of demand from students.

Measurable indicators:

- Beginning year, goals and objectives of the study program

The Master of Science study program in "Architecture" was licensed with DCM No. 908, dated 26.08.2009, as a Master of Science in "Architecture", with the duration of 2 academic years and with 120 ECTS. The study program was accredited with the Order of the Minister of Education and Science No. 286, dated 06.07.2012, based on the Decision of the Accreditation Council No. 339, dated 08.06.2012.

This program was meant for the students that would graduate from the 4 years Bachelor. After the reorganization of the 4 years Bachelor into a 5 years integrated master (In Albanian Language *Program i Integruar i Ciklit të Dytë* PICD) the 2 years Master of Science program became available only to students that started to study architecture in Epoka in the period

[Signature]

2008-2010. Considering this fact, the overall number of students following this program has decreased progressively.

Organization of the study program (years, semesters, weeks, etc.)

- > 1 academic year has 30 teaching weeks in auditorium + 2 week of exams
- > 1 Semester has 15 teaching weeks in auditorium + 1 week of exams
- > 1 ECTS has 25 hours of overall student's work
- > 1 teaching hour has 60 minutes

Title of Diploma

Master of Science (MSc) in Architecture

The curriculum of the study program (according to the model of table 11)

The curriculum is organized in 2 years (4 semesters) with 60 ECTS each. The content of the curriculum is organized according to the experience of many architectural schools in Europe and USA, where the main subject is the architectural design studio, a workshop where students learn and practice by confronting complex design problems.

The method of determining of credits (ECTS) for forms of study:

The table below is filled from an analysis of the data offered in Table 11. The university does not have standard conversion rates for determining the meaning of 1 ECTS for each type of activity.

For example, 1 ECTS of lectures = 10.7 hours in auditorium for some courses 8 and some others 6.7. Seminars are counted 10.7 hours per 1 ECTS. A constant factor would help in having a more standardised understanding of the curricula.

- **Lectures** 6.7-10.7 hours in the auditorium and 18.3-14.3 hours of independent student's work
- **Seminars** 10.7 hours in the auditorium and 14.3 hours of independent student's work
- **Professional Practice** 0 hours in the auditorium and 25 hours of independent student work
- **Master Thesis** 0 hours in the auditorium and 25 hours of independent student work

According to Professional Practice and Master Thesis, the ratio of class hours to the independent work has to be reconsidered. The master students, as discussed in the site visit, have a review process and a supervision work which is not appearing in the hours indicated in Table 11. At the same time, the presentation of Professional Practice and the academic control of the process require a minimum amount of hours that should be reflected in the plan of studies.

The division of credits in class hours and individual study hours is recommended to be arranged in accordance with annex No.5 of the Directive of the Minister of Education and Science No. 15, dated 04.04.2008 "On the organization of studies in public higher education institutions", as long as no recent legislative act is defining another form. A standardised conversion system would be recommended.

Curriculum distributed according to Formation of Activities (A-F) (Table 12)

The formation activities are divided as follows:

A - 12/120 = 10%, B- 42/120 = 35%, D- 36/120 = 30%, F- 30/120 = 25%. It can be noticed that the elective disciplines are more than allowed in the Directive of the Minister of Education and Science No. 15, dated 04.04.2008 "On the organization of studies in public higher education institutions" (7-8%), which is in power until now.

In the given Table 12, the courses Design Methods, Advanced Structural Systems, Housing Systems, Case Studies in Architecture and Criticism, Sunlight in Architecture, Urban Planning, Special Topics in Architectural Design, Special Topics in Building Technology, Special Topics in Urban Planning and Design are referred as nonelective courses, while the student can follow only 4/12 courses shown in the curricula. If counted in this way, the number of elective subjects would increase significantly in 51/120 or the equivalent of 42.5%. Discipline C and E are missing.

HEI has declared on the SER that: A working group is dealing with the updating of the curricula according to the Decision of the Council of Ministers No. 41, dated 24.01.2018.

Changes in the curriculum, compared to licensed/accredited program (Table 13)

According to Table 13, the changes in the program are less than 20% and are not of major importance in content.

Curriculum related to respective academic staff (Table 14)

The academic staff has the proper qualification to lecture in the respective subjects as shown in Table 14. It can be noticed that some lecturers in the department result to cover numerous subjects, which could affect the teaching quality. It is recommended that the department looks forward to increase the number of full time qualified academic staff in order to decrease the weekly load and number of subjects they cover.

Syllabus per each subject, where the following elements should be included:

- Name of the subject / module
- Year / semester when the course is taught
- Name of lecturer who will teach the course
- The place that subject occupies in terms of the overall formation of the student
- Prerequisites (preliminary knowledge) that the student should possess in order to continue the study in the subject
- What knowledge and skills does this subject provide to the students
- Topics to be covered by the course concerning theoretical and practical formation
- Load according to hours in the auditorium and outside the auditorium as well as in ECTS
- The forms and methods of teaching of the subject and the relations between them
- Student assessment forms
- Obligations of the student concerning the subject
- Mandatory and auxiliary literature

Syllabuses are well formatted and completed with the respective info.

All the required information, in accordance with the Bologna requirements, is clearly presented allowing the students to fully understand what is expected from the course and the skills they should acquire.



Analysis of the quality of syllabi

The quality of the syllabuses is high. The program offers a high quality theoretical and practical knowledge, professional skills and scientific competences allowing the students to become excellent professionals as well as giving good background for those who want to proceed for a 3rd cycle in Architecture.

Evaluation according to Standards:

Standards/Criteria	Evaluation according to standards
Standard I. 1 - Institution offers study programs in accordance with its mission and purpose.	
<p>Criterion 1 Institution offers accredited study programs, organized in modules and evaluated by credits under European Credits Collection and Transfer System (ECTS);</p> <p>Criterion 2 Average amount of credits accrued during the year by a student who attends a full-time study program is 60 credits;</p>	<p>Epoka University is offering accredited programs that are organized in modules expressed in ECTS.</p> <p>The 2 year MSc. program in architecture is composed of 2 years x 60 ECTS = 120 ECTS.</p> <p>The meaning of 1 ECTS for each activity is not standardised and has different values when referring to class hours.</p> <p>The program is in general well organized, and fits the mission of the university, market needs & national economic needs.</p> <p>The formation in architecture is a direct contribution related to the understanding, preserving and developing the built heritage as part of the national culture, tradition and values.</p>
Standard I.2 - Study programs are consistent with institution's development strategy.	
<p>Criterion 2 Second cycle study programs "Master of Science", "Master of Fine Arts" or "Professional Master" provide students who possess the university degree "Bachelor" with in-depth theoretical and practical knowledge, and training for scientific research or proper professional training;</p> <p>Criterion 3 Study programs: "Master of Science" or "Master of Fine Arts" and "Professional Master" intend to expand the knowledge acquired in the first cycle of studies;</p> <p>Criterion 4 Integrated study programs of second cycle (in medicine, dentistry, pharmacy, veterinary, architecture) provide students with in-depth knowledge, theoretical and practical scientific competencies, and scientific research training according to the field. After their completion and successful completion of State exam for the specific program, students are entitled to exercise a regulated profession under the law in force;</p> <p>Criterion 5 Study programs of this cycle provide students with general and professional competencies intended to be achieved or enlarged during its</p>	<p>The development strategy of the institution is aiming to develop all the current programs held in Epoka University.</p> <p>Upon completion of studies, students are entitled to work as architects after obtaining the professional licence from the ministry of infrastructure.</p> <p>The students completing this program have the right to continue doctoral studies if accepted by the university offering this level of studies.</p> <p>Although students obtain a MSc. degree and are entitled for third cycle studies (PhD), a very limited number are using this right. Most of the students aim the professional field and work in architectural practices or related industries.</p>

<p>conduct;</p> <p>Criterion 6 Study programs: "Master of Science" or "Master of Fine Arts" and "Professional Master" create strong knowledge foundations for the third cycle of studies – doctorate, including qualification for scientific research and meeting of prerequisites (knowledge, skills and competencies) for admission to the third cycle of studies;</p> <p>Criterion 7 "Professional Master" study programs have clear professional, justifiable, achievable objectives, with clear goals for achieving the necessary qualifications and in accordance with labour market requirements.</p>	<p style="text-align: right;"><i>Agj. Kucis</i></p>
<p>Standard I.4 - Study programs are offered in accordance with level of studies.</p>	
<p>Criterion 1 The content and order of objectives of study programs aim at achieving their goals in line with the level of studies in which they are offered;</p> <p>Criterion 2 Methods of students' assessment through continuous knowledge control by means of tests with alternative answers or final exams demonstrate students' progress and achievements for relevant cycle of studies.</p>	<p>The formal structure of the program and its name are complying with the legislative framework.</p> <p>The program is structured to fit the requirements for the respective level of studies.</p> <p>Assessment of students is based on continuous knowledge control where tests, and intermediate juries evaluate the step by step progress of the students in the course activities.</p>
<p>Standard I.5 - Study programs aim to reach international dimensions.</p>	
<p>Criterion 1 Study programs are based on many years experience and practices of European countries;</p> <p>Criterion 2 Study programs are internationally competitive in the elements they contain (general information, key objectives, curriculum, credits, terms of admission, assessment methods, criteria and procedures for transfer of acquired credits and knowledge, diplomas awarded on completion, etc..) affirming university education values in Albania;</p> <p>Criterion 3 Study programs are designed in accordance with objectives defined in the EU legislation and directives on higher education and regulated professions.</p>	<p>The studio based approach and the basic disciplines of the program refer to well consolidated experiences in Europe and in the US.</p> <p>From the formal aspect, the program is well designed and compatible with the Bologna process, which makes it easy to understand, to compare and to recognise in Europe. The contents of the program is qualitative and shows a serious effort in cultivating a high level university education.</p> <p>The program is fitting the directives and objectives of EU legislation and at the same time takes into account architecture as a regulated profession.</p>
<p>Standard I.6 - Study programs include vocational training and scientific research.</p>	
<p>Criterion 1 Second cycle programs and second cycle integrated programs include vocational training and scientific research;</p> <p>Criterion 2 Study programs are designed in accordance with the Higher Education Institution profile and its development strategy;</p> <p>Criterion 3 Academic staff is engaged in scientific research work for realization of study programs;</p> <p>Criterion 4 Research work of academic staff engaged</p>	<p>The summer practice (internship) is the principal activity of vocational training that the student has to get by working in a company that operates in the design or construction sector.</p> <p>Research is part of the studio works and master thesis where a theoretical approach is requested.</p>

Du

<p>in study program implementation corresponds with the aims to meet its objectives.</p>	<p>The program is designed according to the institutional development strategy.</p> <p>Research is an integral part of the work of academic staff which helps improving the quality of the program. The research fields in most cases match the subjects covered by the academic staff so they contribute directly to the curricular quality.</p>
<p>Standard I.7 - Study programs "Professional Master" are offered in accordance with labour market needs.</p>	
<p>Criterion 1 Second cycle study programs "Professional Master" are offered in accordance with labor market needs;</p> <p>Criterion 2 Second cycle study programs "Professional Master" aim at meeting the needs in relevant domestic or foreign economy sectors.</p>	<p>N/A</p>
<p>Standard I.8 - Study programs take into account labour market needs.</p>	
<p>Criterion 1 Study programs take into account labour market needs and are prepared in accordance with strategic goals of national economic development;</p> <p>Criterion 2 In order to assess labour market needs, Institution carries out a market study, which includes:</p> <ul style="list-style-type: none"> a. students' employment opportunities in domestic or regional, national and international market; b. demands of employers; c. a rough estimate of expected number of students that may be enrolled in this program; d. number of enrolments in similar programs of sister institutions. 	<p>Although the number of young architects has increased rapidly during the last years, there is no employment problems faced till now. The figure of the architect is directly related to the construction industry, design of interiors and furniture, planning, building materials industry etc. All of these are an important contributor to the national economic development.</p> <p>There is not a market study document, but the institution is assessing the market needs through the continuous relationship with companies and alumni.</p> <p>To be considered is that a considerable number of students continue their career abroad and become part of a larger market.</p>
<p>Standard I.9 - Study programs aim at maintaining national cultural values and national interests.</p>	
<p>Criterion 1 Institution offers study programs that do not conflict with national interests;</p> <p>Criterion 2 Study programs intend to help preserve national cultural values.</p>	<p>Architecture as a discipline is directly related to heritage and cultural values.</p> <p>The programs offered by the department of architecture are focussed into understanding, preserving, and creating values at national or local scale.</p>
<p>Standard I.12 - Duration and number of credits for study programs of this cycle are in accordance with law No. 9741 of 21.5.2007, "On Higher Education in Republic of Albania", amended.</p>	
<p>Criterion 1 Study programs "Master of Science" is realized with 120 European credits, ECTS, including 30-40 European credits, ECTS for the research project and thesis to be prepared at the completion of these study programs. Normal duration is 2</p>	<p>The MSc in Architecture is a 2 year program consisting of 2 years x 60 ECTS = 120 ECTS. The issued diploma for this program is "Master of Science in Architecture". The thesis preparation has 30 ECTS on the last (4th)</p>

<p>academic years;</p> <p>Criterion 2 Study programs "Professional Master" are conducted with 60-90 European credits, ECTS. Their normal duration is 1-1.5 (one to one year and a half) academic years.</p> <p>Criterion 3 Integrated study programs of second cycle are completed with the issue of diploma "Master of Science." They are conducted with no less than 300 European credits, ECTS (360 European credits, ECTS for studies in the medical field). Normal duration of integrated study programs is no less than five academic years (6 years for studies in the medicine field).</p>	<p>semester.</p> <p>There is an institutional development strategy which aims to improve study programs, teaching and learning results and the overall quality.</p>
<p>Standard II.6 - Institution provides effective management of information about study programs.</p>	
<p>Criterion 1 The information provided for study programs, modules and syllabuses is easily consultable for students;</p> <p>Criterion 2 Information on study programs, modules and syllabuses is offered in various written and electronic forms.</p>	<p>Most of the information regarding the program is easily accessible online or through the student portal. Detailed material is available on demand in the Department of Architecture or in the respective university structures.</p> <p>Students get informed mainly online, but at the same time they get hand-outs at the beginning of the specific courses.</p>
<p>Standard II.8 - Second cycle study programs and second cycle integrated study programs provide for a graduation plan.</p>	
<p>Criterion 1 Graduation plan explains graduation manner at the completion of studies within the prescribed period;</p> <p>Criterion 2 30-40 credits are foreseen for the implementation of study programs "Master of Science", for research project and thesis.</p>	<p>The graduation path explains the thesis preparation process where most of the work is done individually by the student who is supervised by academic staff members. The thesis should be prepared during the last semester of studies and consists of 750 hours of independent work (30 ECTS). Considering that most of the thesis are also project oriented, it is advisable to preserve the studio character also during the thesis preparation where discussion and interaction can contribute in the quality of the outcome.</p> <p>In any case, a certain number of class hours should be assigned for the supervisor and thesis reviews and/or juries, reducing the hours of independent work for the student.</p>
<p>Conclusions of the evaluation:</p>	
<p>The program is structured referring to the Albanian legislation and aims at a second cycle degree which lead to doctoral studies. The content of the program is referring to the tradition of architectural education based on studio work.</p> <p>The organisation of the study plan is unclear referring to the ECTS distribution and didactic activities. At the same time the weight of elective courses is considered high. It would be recommended to review the plan with references to the Directive of the Minister of Education and Science No. 15, dated 04.04.2008 "On the organization of studies in public higher education institutions". At the same time the program has to be adjusted to DCM No. 41, dated 24.01.2018</p>	

regarding the formative disciplines.

The standards: Substantially met

Recommendations:

It is recommended that the department looks forward to increase the number of full time qualified academic staff in order to provide qualitative teaching, decrease the weekly teaching load of the staff and reduce the number of subjects they cover.

According to Professional Practice and Master Thesis, the ratio of class hours to the independent work has to be reconsidered. The presentation of Professional Practice and the academic control of the process require a minimum amount of hours that should be reflected in the plan of studies.

The division of credits in class hours and individual study hours is recommended to be arranged in accordance with annex No.5 of the Directive of the Minister of Education and Science No. 15, dated 04.04.2008 "On the organization of studies in public higher education institutions", as long as no recent legislative act is defining another form. A standardised conversion system would be recommended.

A reduction of the number of elective subjects is recommended.

8. Teaching

Description

Terms of reference: organization of teaching, forms of teaching, load and quality of implementation, control of student knowledge, teaching methods, teaching technologies, internal evaluation of teaching, engagement of students in the components of the activity of the unit, etc.

The organisation of teaching activities is somehow unclear as a result of adapting the 4 year program based on the American system to a 5 year system in ECTS base. The two years program being part of the 5 years program faces the same issues. The difference between lecture and seminar is not well defined, allowing the flexibility to the lecturer to interpret the hours in auditorium as classical lectures, interactive discussions, exercises, studio hours etc. There is not a constant definition of how many hours in auditorium 1 ECTS is covering for each activity. For example, 1 ECTS of lectures = 10.7 hours in auditorium for some courses and 6.7 for others. A constant factor would help in having a more standardised understanding of the curricula and of the teaching activity associated to that.

The teaching methodology follows the traditional studio based process, well known in most of the architectural schools worldwide. The usage of infrastructure and equipment to assist the class hours is appropriate for architectural education. A quality system is established in university base, where one of the most visible parts is the teacher evaluation form filled by the students every semester. Although a quality system is present, measurable results of its impact are hard to evidence. Based on the specificity of architectural curricula, the role of the department in controlling, evaluating and improving the quality should be more active, and the system could have a discipline related to methodology for quality control.

Measurable indicators:

Load in hours for forms of teaching (Table 15)



The class hours cover a total of 800 hours while the ratio between Lectures and Seminars is 4/1. If referring to the concept of classical lectures, this ratio is too high. Considering that the system applied in the university consists of lectures that include different activities (discussions, workshops, studio work, etc.) it is advisable to express these activities in separate indicators.

Refined

Forms of control of Knowledge (Table 16)

The control of knowledge is done through components that assess the continuous performance through the year. According to the discipline, the final exam weights 30-60% of the final evaluation. Such approach to the final grade is considered to be efficient and to help students to have an equally distributed load throughout the semester.

Grade awarding system (Table 17)

The grading system is based on both the Albanian (1-10) system and the American one (0-4). The minimal passing grade is 5/10 which corresponds to a total of point of minimum 60/100. This is considered a relatively strict policy that stimulates students to give more effort to collect this score.

A minimum CGPA of 1.8 is requested to graduate, which is equivalent of the grade 6.5/10. Students that have lower results, have to repeat courses where they got low evaluation in order to be able to complete their studies. Also this policy is considered to be a good practice in assuring good quality students after graduation.

Engagement of students in the components of the activity of the unit (Table 18)

The data presented by the Department in Table 18 show a high level of engagement of the students in its activity.

9. Students

Description

Terms of reference: student admission procedures, quality of enrolled students, number of enrolled and graduated students over the years, average duration of studies, passing rate of students and problems related to this, statistics, employment of graduates, communication with graduated students (alumni), informing of students.

The student admission office is responsible about the preliminary information on the offered programs and about following all enrolment procedures. The 2 year Master program in fact is based on students coming from the former 4 years program which would like to complete a MSc degree. The number of students in this program is relatively low and varying from 1 to 6 in the last three years. Considering that the number of students remaining from the former 4 year program is relatively low, the university has to consider if this program will continue or if it is destined to be closed in the coming years.

Almost 100% of graduates have immediate employment which is a good indicator of the demand for architects in the market and the formation that the students receive. Although the salaries for young architects have decreased during the last years (due to the large number available) the employment rate is still good and the competitiveness of the market is getting higher.

lu

The university is trying to keep a detailed database of the alumni and to follow their career through the Career and Alumni office which collects detailed data.

Measurable Indicators:

- Procedures of student admission (Specific criteria for the admission of students)

The procedures and criteria for admission are in accordance to the legislation on higher education in Albania.

- Quality of enrolled and graduated students (Table 19)

Considering the small number of students entering and graduating from this program, it is hard to deduce an overall evaluation based on the average grade. At the same time, conclusions are hard to draw because most of the students complete only 1 year of studies (the second year) because they derive from the former 4 years program. Considering that the 2 year program is part of the 5 years program, to evaluate the quality of students, specific statistics should refer to the 2 last years of the 5 years program in architecture.

- Data of the employment of graduate students (Table 20)

The students of this program are almost 100% employed after graduation. Part of them are already employed when they start the MSc in architecture (for the students of the former 4 years program, the full time attendance of the program is required during 1 semester)

Evaluation according to Standards:

Standards/Criteria	Evaluation according to standards
Standard IV.1 - Students have the right to pursue study programs of second cycle and integrated study programs of second cycle.	
<p>Criterion 1 Students who attend study programs "Master of Science" or "Professional Master" have at least a university degree "Bachelor" and have accumulated 180 ECTS credits;</p> <p>Criterion 2 Admission to integrated study programs is made in accordance with Law No. 9741 of 21.5.2007, "On Higher Education in Republic of Albania", amended, and bylaws in force;</p> <p>Criterion 3 Students meet eligibility criteria set by the institution;</p> <p>Criterion 4 Students of these study programs give English exam based on internationally recognized tests until graduation. For study programs "Professional Master", English level is B2, and for study programs "Master of Sciences and integrated study programs of second cycle level of English is C1, under the European Framework for Languages;</p>	<p>The students attending the 2 year program are mostly accepted from the former 4 year bachelor degree or from bachelor programs of other universities. The students of the former 4 year program are considered as transfer students and they get recognised the first year of studies. In fact this is a technical solution to offer the possibility to 4 year Bachelors to obtain a MSc degree within a 5 year time as regular architecture students do. Although this is an acceptable solution for the few students remaining from the former 4 year program, the existence of such program has to be reconsidered in few years and the recognition of credits from the 4 year program should be justified in accordance to the legislation.</p> <p>The education in "Epoka" University is in English language, and the students are requested to have proper knowledge of the language on admission. The students present the needed documentation regarding foreign</p>

<p>Criterion 5 Institution evaluates admission policies and their impact on further progress of students in the study program, and designs possible plans to change admission criteria.</p>	<p>languages in accordance with the legislation.</p>
<p>Standard IV. 2 - Institution informs students about: the institution status, study programs it offers and employment policies.</p>	
<p>Criterion 1 Students are given information about opportunities for employment after graduation at the completion of these study programs;</p> <p>Criterion 2 Students are given information about institution's accreditation and study programs offered as well as recognition and validity, at home and abroad, of diploma, issued by the institution;</p> <p>Criterion 3 Students are offered career counseling service.</p>	<p>The career and alumni office and the academic advisors provide students with information and support on their possibilities of employment during their education.</p> <p>Prospective students are informed by the Admission Office about the basics on the program.</p> <p>The information about the program, its validity, accreditation etc. is provided mainly through the web site of the university.</p> <p>On demand, additional information can be accessed at the faculty or department level.</p>
<p>Standard IV. 3 - When institution applies for evaluation and accreditation for the second time, it has statistics about the number of students attending study programs of second cycle and integrated programs of second cycle.</p>	
<p>Criterion 1 Institution has annual statistics on number of graduates in study programs they have completed;</p> <p>Criterion 2 Institution possesses annual statistics on number of students enrolled in study programs of second cycle and integrated study programs second cycle, withdrawals from program, dropouts before program completion, and unsuccessful completion of academic year;</p> <p>Criterion 3 Institution has data on academic performance of students from admission to graduation.</p>	<p>The university has detailed data on the number of graduates, and at the same time follows their career through the alumni office.</p> <p>The registration office has detailed data on the number of students enrolled, those who have been transferred, those who interrupted their studies etc.</p> <p>The registrar office keeps also the detailed results of each student and the whole documentation related to exams and graduation.</p> <p>The data are kept both in hard copy and also in electronic form, which allows easy access and generation of statistics.</p>
<p>Standard IV. 4 - Institution has a database about employment statistics of graduate students after completion of study programs of second cycle and integrated study programs of second cycle.</p>	
<p>Criterion 1 Institution maintains a database of students employed after completion of study programs of second cycle or integrated study programs of second cycle and their employment places;</p> <p>Criterion 2 Institution maintains a database for students who continue further studies in other study cycles, etc..</p>	<p>The career and alumni office had detailed information on the graduated students and is keeping records of their employment status or further career advancement.</p> <p>Considering that the number of students graduated in Epoka is not very high, it has been possible to create an accurate database and to keep the information updated.</p>
<p>Standard IV. 5 - Institution informs students consistently in details about study</p>	

Epoka

[Signature]

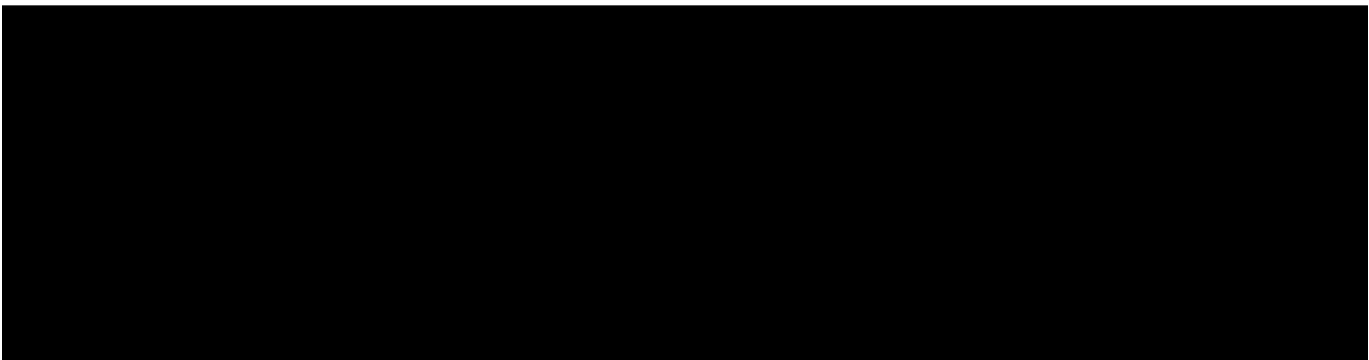
programs.	
<p>Criterion 1 Students are informed in details about study programs, time of completion and organization of program, program accreditation status;</p> <p>Criterion 2 Students are informed about evaluation results during the program and at its completion;</p> <p>Criterion 3 The module head discusses the results of these evaluations with students openly.</p>	<p>The information for students is easily accessible in the web page of the university and also through the web portal of the students. Detailed information is available on demand in the department and faculty.</p> <p>It seems that the communication between students and academic staff is quite opened and direct and the students have good level of knowledge about the program.</p>
Standard IV. 6 - Institution engages its staff to care for students.	
<p>Criterion 1 Institution provides counseling for students, it follows their progress and helps to address and resolve issues and problems that relate to the teaching process;</p> <p>Criterion 2 Institution (through the office for career counseling) helps students to select the institution in which they will carry out the professional practice, when this is foreseen.</p>	<p>The academic staff helps the students during their studies by orienting them and addressing their problems. The academic staff is receiving students during the office hours. Considering that the Department of architecture has a limited number of students, the advisory system results to be efficient and the contacts with professors and the authorities are easy and frequent.</p> <p>The career and alumni office orients students during their studies and keeps contacts after graduation.</p> <p>The career office is providing students with information and contacts for their internships and is organising activities where students get in touch with companies in order to benefit of possible opportunities of employment. Such activity is the career fair organised yearly in the university.</p>
Conclusions of the evaluation:	
<p>The 2 years Master of Science in Architecture is serving for students coming from the former (closed) 4 years program and allows them to complete a 5 year degree in architecture and obtain a MSc level. The program is seen as a technical solution for a limited number of students which does not justify the existence of a program or its prospective development.</p> <p>The student information system is easily accessible and students result to be well informed about their program and all other issues concerning their education. Information is available online, in the department, in the career office, and in the registration office.</p> <p>The standards: substantially met.</p>	

20/10/2014

SCIENTIFIC RESEARCH POLICY

10. Scientific research

Description

Terms of reference: scientific research policies, publications over the years, projects acquired and implemented, participation in activities within and outside the country, activities organized by the unit, connection of research with teaching, official evaluation of individual research activities or of the research activities of the unit

byggs

The Department of Architecture is having continuous research work mostly on individual contributions of the staff members. There is a list of publications for each academic year which can be accessed online while at present there is no ongoing research program at the Department of Architecture. There is a support from the University for the participation in conferences and there is also bonuses for publications in impact factor periodicals. Although the University has organised in the past successful conferences such as ICAUD (International Conference on Architecture and Urban Design 2012, 2014), there is no recent research focused activities concerning architectural science.

The Department is currently participating as partner in two research projects, respectively:

1. ERASMUS+ Project 2016 "Knowledge for a Resilient Society (K - FORCE, Project number: 573942-EPP-1-2016-1-RS-EPPKA2-CBHE-JP).
2. Renewable Energy and Landscape Quality - (COST Action TU 1401).

The individual research conducted by the academic staff generally corresponds to their teaching activity or to their field of interest. The department is trying to structure such activity by creating research areas, but still the contribution is on individual basis and there is no financed research at the moment relevant to these areas.

The University states that the main objective of the CORDA Research Center is to facilitate the engagement of architectural students in professional practice. This should not be the main purpose of a Research Centre.

Measurable indicators:

Data on scientific research (Table 21)

Data on research show an active research environment in the University within the last five years.

There are on average 95 publications/year from the academic staff which demonstrates an active engagement in research activity.

Evaluation according to Standards:

Standards/Criterions	Evaluation according to standards
Standard III.3 - Academic staff is engaged in scientific activities organized in the study program framework.	
<p>Criterion 1 Academic staff publishes regularly articles, scientific materials in relevant discipline;</p> <p>Criterion 2 through engagement in these activities, academic staffs give their contribution to development of science or development of production or service sectors.</p>	<p>Most of the academic staff is engaged in research mostly on individual bases. Although the department has tried to create structures (research areas) that plan and orient the research, there is no research projects that run and get financed regularly.</p> <p>The research conducted is mostly related to theoretical issues / fields and less to the application and direct contribution to production</p>

[Handwritten signature]

	or services.
Standard III.4 - Institution offers also teaching programs in foreign language, with a qualified academic staff.	
<p>Criterion 1 Academic staff that is engaged in teaching in foreign language has conducted university studies in that language or possesses a certificate for its advanced mastery;</p> <p>Criterion 2 Academic staff that engages in teaching in foreign language has teaching experience in that language for one semester at least.</p>	<p>The academic staff is fully proficient in English and most of them have studied abroad.</p> <p>The whole program is taught in English language. This is considered also as one of the strongest points of this program.</p>
Standard III.10 - Institution is committed to continuous and further training of its staff.	
<p>Criterion 1 Institution organizes specific programs for further professional qualification of academic and teaching-scientific staff;</p> <p>Criterion 2 Institution provides academic and teaching-scientific staff with the possibility of further qualifications in the country and abroad.</p>	<p>There are evidences of activities undertaken for the training of academic staff especially on the teaching methodology and other issues related to the academic agenda. Nevertheless there is no regular agenda about these activities.</p> <p>The institution tries to promote qualification of the staff especially through mobility to other partner institutions, mostly financed by EU programs such as Erasmus+ or by enabling the participation to scientific conferences.</p> <p>Staff members have been teaching and exchanging experience in the last years with Politecnico di Bari and University of Gdansk.</p>
Standard III.11 - Institution has a database about scientific-research activities of its academic staff.	
<p>Criterion 1 Institution has a database of scientific studies of academic staff engaged in this study program;</p> <p>Criterion 2 Institution has a database of publications (texts, monographs, books, articles or presentations in conferences) inside and outside the country by academic staff engaged in this study program;</p> <p>Criterion 3 Institution has a database for national and international scientific research projects in which academic staff engaged in this study took part or takes part.</p>	<p>The Faculty of Architecture and Engineering has an online list of the articles or other research work published in</p> <p>http://fae.epoka.edu.pl/home-publications-647-1854.html</p> <p>All the research work is also documented in the Research and Projects Office of the University.</p> <p>This office is also responsible for keeping records of all the research activity and involvement of academic staff.</p>
Conclusions of the evaluation:	
<p>The individual research of staff members is the base of the research activity ongoing in Epoka University. Such research is mostly focused on theoretical issues / aspects of architectural science. The university seems concerned in the continuous training of staff and in the promotion of qualitative research work. In any case, more support is needed for organising regular research focused activities and in having financially supported research projects.</p> <p>The usage of English language within the institution is considered to be one of the strongest points both for students and academics.</p> <p>Although there is a constant effort, the program should focus on a regular structured research</p>	

Jeff

[Signature]

activity, financed by the university or outer sources. Research activities such as conferences, seminars or other forms of sharing and promoting the results of research work should be present on a regular basis.

The standards: are substantially met.

Definitive

11. National and international cooperation, relations with the public

Description

Terms of reference: cooperation with other institutions at the local, national or international level, the mobility of academic personnel in each of the abovementioned levels, participation in national and international programs, links with the business community and the labour market.

Epoka University demonstrates to be in active relationship with partners from the academic field and also non-academic institutions in Albania or abroad. The mobility towards academic institutions is present in the recent years mostly through staff exchange benefiting from Erasmus + agreements. The relationships with the business community and labour market are mostly focussed on the development of practical activity such as practices and internships. Although the environment seems active in offering dynamic relations with partners, the business and industry related research is not yet present in the university.

Measurable indicators:

- Data on national and international cooperation (Table 22)

According to the data of Table 22, Epoka University shows to have active collaborations with local and international partners. This includes mobility of students and staff, and at the same time participation in common projects.

- Communication and cooperation with other state institutions, professional organizations, business community, labour market and other social actors important for higher education (Table 23)

There is a list of 109 partners with the university belonging to state institutions, HEI, professional and business community etc. 37 cooperation are related to the summer practice activity for students, 7 include Erasmus + agreement, and the rest are agreements on bilateral cooperation (65).

Evaluation according to Standards:

Standards/Criteria	Evaluation according to standards
Standard V. 3 - Institution has cooperative relations with domestic or foreign business actors to carry out practices his students.	
Criterion 1 for carrying out various practices provided for the realization of study program "Master Professional", Institution demonstrates that has cooperative relations with the enterprise or venture out areas of trade, industry or manufacturing services;	The University has a list of 37 partners which are collaborating in fulfilling the practice/internship hours planned in the curricula. These partners are professional organizations and/or companies related to the labour market.

[Signature]

<p>Criterion 2 To perform the different practices in the study program "Master of Science" or in programs of integrated studies second cycle, Institution demonstrates that there is cooperation relationship with various actors from the public sphere and that private enable the benefit of the best professional knowledge by student.</p>	<p>The summer practice is one of the main curricular activities which is held in the partner companies and where the student is involved in practical activity.</p>
--	---

Approved

Standard VII.1 - Institution guarantees fruitful cooperation relations among its staff.

<p>Criterion 1 For drafting and overseeing the program, institution promotes cooperation among staff within the institution through information exchange;</p>	<p>The program is reviewed periodically in the Department of Architecture which guaranties the involvement of all the academic staff in the process. However a less hierarchic approach, stimulating active participation and debate would be recommended.</p>
<p>Criterion 2 With division of duties between personnel within the institution, by taking respective responsibilities and continued analysis of their work, institution guarantees fruitful cooperation relations.</p>	<p>In university scale, the collaboration between the staff members results efficient and well-structured. The hierarchic structure of the university is defined in the Statute and the respective Regulations.</p>

Standard VII.2 - Institution guarantees collaborative relationship with counterpart institutions abroad and domestic or foreign business actors.

<p>Criterion 1 Institution has established cooperation relations with counterpart institutions abroad and domestic or foreign business actors in order to achieve objectives of study programs.</p>	<p>The university has provided a large number of partners related to the academic, public and professional sector, both in Albania and abroad. This network is assisting directly and indirectly the quality of the program, by offering direct contact with the students, through exchange programs or internships, but at the same time by offering the possibility for the academic staff to be in touch with other academic environments or the professional domain.</p>
<p>Criterion 2 Institution establishes cooperative relations with employers for the conduct and supervision of practice, depending on study programs it provides;</p>	<p>While the summer practice results to be a successful activity conducted in partnership with companies operating in the Albanian market, the vocational trainings are lacking.</p>
<p>Criterion 3 Institution organizes further vocational training in coordination with the employer;</p>	<p>There is no proper analysis of the benefits of the specific program from the agreements and relations established. This report would help in improving and consolidating a relationship that goes further than exchange or internships.</p>
<p>Criterion 4 Institution makes an analytical report of benefits from contractual agreements for the realization of study programs.</p>	

Conclusions of the evaluation:

Epoka university has established a large number of partners that offer the possibility for students to benefit from internships and to be in touch with professional activities. The further consolidation of these relationships would bring not only the support to the curricular activity, but at the same time the continuous relation of the academic environment with the market, and the involvement of academics in industry related research.

The standards: are fully met.

[Signature]

ANALYSIS OF FULFILLING THE RECOMMENDATIONS GIVEN BY THE ACCREDITATION COUNCIL IN THE DECISION OF THE FIRST ACCREDITATION

Left Revised

Analysis of fulfilling the recommendations:

- a) Recommendation is fulfilled.
- b) Recommendation is *not fulfilled/not relevant*. This recommendation is not relevant, because the program is serving mainly to students of the former 4 years program that graduated before the reorganization of the studies in 5 years.
- c) Recommendation is fulfilled.
- d) Recommendation is fulfilled.

SWOT ANALYSES

Summary analysis by SWOT method (Strengths, Weaknesses, Opportunities, Threats).

a. STRENGTHS:

- 1) The education in Epoka University is offered in English language.
- 2) The infrastructure and the facilities within the university offer a qualitative environment for the academic activity. The Design Studios offer very good conditions for the student to work, considering the specific needs of architecture students.
- 3) Epoka University offers merit based scholarships that enable qualitative students to choose its programs.
- 4) Almost full employment of the students after finishing the course.

b. WEAKNESSES:

- 1) The 2 year MSc. program is designed for students coming from the former 4 year Bachelor program, and it is destined to close in few years considering the small number of possible students still not enrolled. At the same time there is no evident interest of students that have completed elsewhere a bachelor in architecture.
- 2) The students coming from the 4 years program are considered transfer students even though they have completed a previous degree. At the same time, part of the credits are recognized from a first cycle degree to a second cycle degree.
- 3) Although the curricula are aiming a scientific formation, the percentile of the students following the doctoral studies is very low, while most of them choose the professional activity.
- 4) The study plan is unclear regarding the way ECTS are related to the didactic activities. It is necessary to have a clear definition about the type of activities and the respective hours for each credit.
- 5) The percentage of elective courses is considered high for the specific program.
- 6) Lack of professors holding a PhD degree (only 4 have it).
- 7) Professors are overloaded with teaching activity. The remaining available time is not enough to improve the research activity.

[Signature]

- 8) Research activity needs to improve and intensify.
- 9) Few contacts with local industry or local authorities with no impact in funds affecting both academic and research activities.
- 10) The Quality control System is not yet fully developed.

Agjshunt

c. OPPORTUNITIES:

- 1) The improvement of the Quality Assurance System through the creation of a Department / Faculty based quality system related to the specifics of the program could impact more the overall quality. Such system should be an active approach that can be based on the principle Plan - Do - Check - Act where the Department would have a crucial role.
- 2) The improvement of the quality of the program is strongly related to the number of qualified academic staff belonging to the categories Lecturer and Professor.
- 3) The academic activity of the program would be assisted if more laboratories and/or facilities related to practical work and formation were available for the students and curricular activity.
- 4) Student and staff mobility are considered to give a very good contribution in the overall academic activity. The intensification of such exchange is considered as an opportunity for continuous improvement of the quality.
- 5) The Department can make more efforts to obtain research funding (from university, industry, state agencies or European funds) in order to create a well-structured and more impacting research environment.
- 6) The University could explore additional income sources in order to be able to increase its support for research and to reduce the studying cost for students.
- 7) Considering the specifics of the program and of the Department, a specific Action Plan (based on the strategic development plan) would help the overall development of the program and an autonomous and program-specific track within the overall development of the university.

d. THREATS:

- 1) The quickly increasing number of architects and the crisis of the construction sector could present a threat in the future for the employment of the students following this program.
- 2) The limited number of students coming from the former 4 years program in architecture which is supposed to feed the MSc. program in architecture.

External Evaluation Team

[Signature]

Dr. Gjergji Islami

PhD. Manuela Almeida

[Signature]

Annexes

Organization scheme of Epoka University

Left

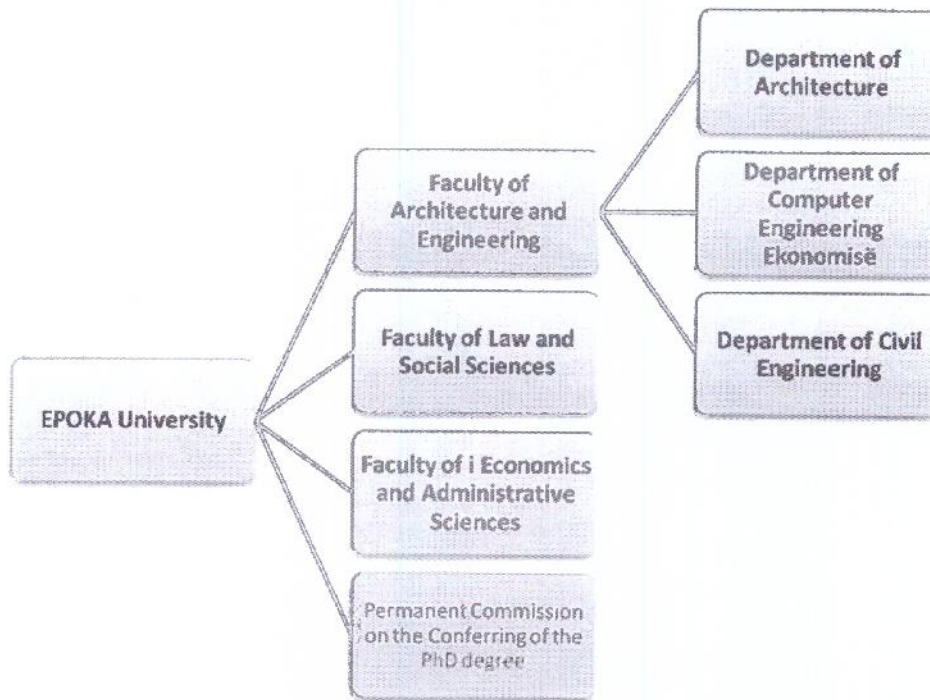


Table 1

HEI	Faculty of Architecture and Engineering (2017-2018)						
	Number of EAS		Number of ASC		Total		Number of AS
	Total	Titles/degree qualifications	Total	Titles/degree qualifications	Total	Titles/degree qualifications	
Department of Architecture	9	4	8	2	17	6	4
Department of Civil Engineering	7	5	13	9	20	14	5
Department of Computer Engineering	7	7	1	1	8	8	5
in total	23	16	22	12	45	28	14

List of Effective Academic Staf (EAS) and Academic Staf with Contracts (ASC) in the Departments 2017-2018 (Tables 2)

Tables 2

[Handwritten signature]

Faculty of Architecture and Engineering, Department of Architecture					
EAS (Name Surname)	Title/ Degree	ASC (Name Surname)	Title/ Degree	Institution where they work full time	
1	Edmond Manahasa	Dr Head of dep	1	Dorian Tytymce	Msc Eurocol sh.p.k
2	Sokol Dervishi	Prof.As	2	Ernest Shtepani	Msc Ministria e zhvillimit Urban
3	Anna Yunitsyna	Dr	3	Frida Pashako	Dr Bashkia Tiranë
4	Odeta Manahasa	Dr	4	Pirro Vaso	Msc Not employed
5	Artan Hysa	Msc	5	Erida Sulaj	ZRPP
6	Egin Zeka	Msc	6	Jurtin Hajro	Msc Commonsense studio
7	Desantila Hysa	Msc	7	Albana Halili	Dr Universiteti "A. Moisiu", Durrës
8	Artemis Hasa	Msc	8	Teuta Kodra	Akademja sh.p.k
9	Ina Omanani	Msc			
Faculty of Architecture and Engineering, Department of Civil Engineering					
EAS (Name Surname)	Title/ Degree	ASC (Name Surname)	Title/ Degree	Institution where they work full time	
1	Miriam Ndini	Prof.As, Head of Department	1	Ervin Paci	Dr Polytechnic University of Tirana
2	Huseyin Bilgin	Prof As	2	Erion Bulkaçi	Dr Polytechnic University of Tirana
3	Erion Luga	Dr	3	Endrit Hoxha	Dr -
4	Enea Mustafaraj	Dr	4	Ferdinand Berberi	Dr TAP
5	Julinda Keçi	Dr	5	Ylber Mucaku	Prof.As Polytechnic University of Tirana
6	Armando Demaj	Msc (PhD in Proces)	6	Albana Halili*	Dr University A. Moisiu, Durrës
7	Marsedi Leti	Msc	7	Erind Bedalli*	Dr University A. Xhuvani, Elbasan
			8	Klaudio Peqini*	Msc
			9	Enriketa Sogatli*	Dr
			10	Julian Hoxha*	Dr
			11	Mustafa Ustuner*	Msc
			12	Hakan Yozgatli*	Msc
			13	Artemis Hasa*	Msc
Faculty of Architecture and Engineering, Department of Computer Engineering					
EAS (Name Surname)	Title/ Degree	ASC (Name Surname)	Title/ Degree	Institution where they work full time	
1	Arban Uka	Dr, Head of department	1	Endrit Encsi	Prof.As University Polytechnico of Tirana
2	Betim Çiço	Prof.Dr			
3	Elton Domnori	Dr			
4	Endri Stoja	Dr			
5	Julian Hoxha	Dr			
6	Ali Osman Topal	Dr			
7	Ito Wasito	Prof.As			

*1) Guest Lectures

Faculty of Architecture and Engineering, Department of Architecture (2012-2013)					
EAS (Name Surname)	Title/ Degree	ASC (Name Surname)	Title/ Degree	Institution where they work full time	
1	Sokol Dervishi	Dr Head of Dep	1	Adelina Greca	Msc Not employed
2	Mehmet Ardicioglu	Dr	2	Kamela Guza	Msc Not employed
3	Ilir Nase	Dr	3	Dorian Tytymce	Msc Eurocol sh.p.k
4	Anna Yunitsyna	Msc	4	Klodjan Xhexhi	Msc Erjoni sh.p.k
5	Edmond Manahasa	Msc	5	Eldira Çoku	Msc Palma construction sh.p.k
6	Artan Hysa	Msc			
7	Desantila Hysa	Msc			
8	Odeta Manahasa	Msc			
9	Valbona Koçi	Msc			
10	Jurtin Hajro	Msc			
11	Egin Zeka	Msc			

Faculty of Architecture and Engineering, Department of Architecture (2013-2014)						
EAS (Name Surname)		Title/Degree	ASC (Name Surname)		Title/Degree	Institution where they work full time
1	Sokol Dervishi	Prof.As Head of Dep	1	Adelina Greca	Msc	Not employed
2	Ilir Nase	Dr	2	Gjergj Vinjau	Msc	Agjencia e shërbimit arkeologjik
3	Anna Yunitsyna	Dr	3	Dorian Tytymçe	Msc	Eurocol sh.p.k
4	Edmond Manahasa	Msc	4	Ledia Tota	Msc	Agjencia e zhvillimit te territorit
5	Artan Hysa	Msc	5	Marenglen Zyko	Msc	Not employed
6	Desantila Hysa	Msc				
7	Odeta Manahasa	Msc				
8	Valbona Koçi	Msc				
9	Jurtin Hajro	Msc				
10	Egin Zeka	Msc				
11	Frida Pashako	Dr				
12	Artemis Hasa	Bsc				
13	Ina Osmani	Bsc				

Faculty of Architecture and Engineering, Department of Architecture (2014-2015)						
EAS (Name Surname)		Title/Degree	ASC (Name Surname)		Title/Degree	Institution where they work full time
1	Sokol Dervishi	Prof.As	1	Etjana Shkreli	Msc	Go Albania 2
2	Frida Pashako	Dr	2	Ernest Shtepani	Msc	Ministria e zhvillimit Urban
3	Anna Yunitsyna	Dr				
4	Edmond Manahasa	Msc				
5	Artan Hysa	Msc				
6	Desantila Hysa	Msc				
7	Odeta Manahasa	Msc				
8	Valbona Koçi	Msc				
9	Jurtin Hajro	Msc				
10	Egin Zeka	Msc				
11	Artemis Hasa	Bsc				
12	Ina Osmani	Bsc				
13	Regina Vathi	Bsc				
14	Filim Miftari	Bsc				

Faculty of Architecture and Engineering, Department of Architecture (2015-2016)						
EAS (Name Surname)		Title/Degree	ASC (Name Surname)		Title/Degree	Institution where they work full time
1	Sokol Dervishi	Prof.As	1	Dorian Tytymçe	Msc	Eurocol sh.p.k
2	Erion Luga	Dr	2	Ernest Shtepani	Msc	Ministria e zhvillimit Urban
3	Anna Yunitsyna	Dr	3	Frida Pashako	Dr	Bashkia Tiranë
4	Edmond Manahasa	Msc	4	Pirro Vaso	Msc	Not employed
5	Desantila Hysa	Msc	5	Enkela Alimadhi	Msc	Not employed
6	Odeta Manahasa	Msc				
7	Jurtin Hajro	Msc				
8	Egin Zeka	Msc				
9	Ina Osmani	Bsc				

Faculty of Architecture and Engineering, Department of Architecture (2016-2017)						
EAS (Name Surname)		Title/Degree	ASC (Name Surname)		Title/Degree	Institution where they work full time
1	Sokol Dervishi	Prof.As	1	Dorian Tytymçe	Msc	Eurocol sh.p.k
2	Erion Luga	Dr	2	Ernest Shtepani	Msc	Ministria e zhvillimit Urban
3	Anna Yunitsyna	Dr	3	Frida Pashako	Dr	Bashkia Tiranë

4	Edmond Manahasa	Dr	4	Pirro Vaso	Msc	Not employed
5	Odeta Manahasa	Dr	5	Klevis Zaimaj		Not employed
6	Desantila Hysa	Msc	6	Jurtin Hajro	Msc	Commonsense studio
7	Enkela Ahmadhi	Msc				
8	Ina Osmani	Msc				

Edmond Manahasa

Faculty of Architecture and Engineering, Department of Architecture (2017-2018)						
EAS (Name Surname)	Title/Degree	ASC (Name Surname)	Title/Degree	Institution where they work full time		
1	Edmond Manahasa	Dr Head of dep	1	Dorian Tytmca	Msc	Eurocol sh.p.k
2	Sokol Dervishi	Prof.As	2	Ernest Shtepani	Msc	Ministria e zhvillimit Urban
3	Anna Yunitsyna	Dr	3	Frida Pashako	Dr	Bashkia Tiranë
4	Odeta Manahasa	Dr	4	Pirro Vaso	Msc	Not employed
5	Artun Hysa	Msc	5	Enida Sulaj		ZRPP
6	Egin Zeka	Msc	6	Jurtin Hajro	Msc	Commonsense studio
7	Desantila Hysa	Msc	7	Albana Halili	Dr	Universiteti "A. Moisiu", Durres
8	Artemis Hasa	Msc	8	Teuta Kodra		Akademia sh.p.k
9	Ina Osmani	Msc				

Scientific Council for Study Program / Coordinators of study program (Table 3)

Table 3

Name Surname	Title/Degree	Duty at the Scientific Council
Sokol Dervishi	Prof. As	Head of Dep
Anna Yunitsyna	Dr	Member
Odeta Manahasa	PhD	Member
Edmond Manahasa	PhD	Member

Data for the qualification of academic staff for the study program (Tables 4)

Tables 4

Academic staff for the study program Msc in Architecture for the academic year 2012 - 2013					
EAS (Name Surname)	Title/Degree	ASC (Name Surname)	Title/Degree	Institution where they work full time	
1	Sokol Dervishi	Dr			
2	Ilir Nase	Dr			
3	Ahmed Fatih Ersoy	Msc			

Academic staff for the study program Msc in Architecture for the academic year 2013 - 2014					
EAS (Name Surname)	Title/Degree	ASC (Name Surname)	Title/Degree	Institution where they work full time	
1	Sokol Dervishi	Prof.As			
2	Frida Pashako	Dr			
3	Albana Halili	Dr			

Academic staff for the study program Msc in Architecture for the academic year 2014 - 2015						
EAS (Name Surname)	Title/Degree	ASC (Name Surname)	Title/Degree	Institution where they work full time		
1	Sokol Dervishi	Prof.As	1	Etjana Shkreli	Msc	Go Albania 2
2	Frida Pashako	Dr	2	Ernest Shtepani	Msc	Ministria e zhvillimit Urban
3	Anna Yunitsyna	Dr	3	Ledia Tota	Msc	Agjencia e zhvillimit te territorit
4	Albana Halili	Dr				
5	Edmond Manahasa	Msc				
6	Egin Zeka	Msc				
7	Jurtin Hajro	Msc				

[Signature]

**Academic staff for the study program Msc in Architecture
for the academic year 2015 - 2016**

EAS (Name Surname)	Title/ Degree	ASC (Name Surname)	Title/ Degree	Institution where they work full time
1 Sokol Dervishi	Prof.As	1 Frida Pashako	Dr	Bashkia Tiranë
2 Anna Yunitsyna	Dr	2 Ernest Shtepani	Msc	Ministria e zhvillimit Urban
3 Artan Hysa	Msc	3 Pirro Vaso	Msc	Not employed
4 Desantila Hysa	Msc			
5 Jurtin Hajro	Msc			

Handwritten signature

**Academic staff for the study program Msc in Architecture
for the academic year 2016 - 2017**

EAS (Name Surname)	Title/ Degree	ASC (Name Surname)	Title/ Degree	Institution where they work full time
1 Sokol Dervishi	Prof.As	1 Frida Pashako	Dr	Bashkia Tiranë
2 Anna Yunitsyna	Dr	2 Ernest Shtepani	Msc	Ministria e zhvillimit Urban
3 Egin Zeka	Msc	3 Pirro Vaso	Msc	Not employed
4 Desantila Hysa	Msc	4 Albana Halili	Dr	Universiteti "A. Moisiu", Dures
5 Odeta Manahasa	Dr	5 Jurtin Hajro	Msc	Commonsense studio
6 Ina Osmani	Msc			

**Academic staff for the study program Msc in Architecture
for the academic year 2017 - 2018**

EAS (Name Surname)	Title/ Degree	ASC (Name Surname)	Title/ Degree	Institution where they work full time
1 Edmood Manahasa	Dr	1 Albana Halili	Dr	Universiteti "A. Moisiu", Dures
2 Sokol Dervishi	Prof.As	2 Dorian Tytymçe	Msc	Eurocol sh.p.k
3 Anna Yunitsyna	Dr	3 Ernest Shtepani	Msc (PhD cand)	Ministry of Energy and Infrastructure
4 Odeta Manahasa	Dr	4 Jurtin Hajro	Msc (PhD cand)	Commonsense studio
5 Niuton Mulleti	Dr	5 Piro Vaso	Msc	N/A
6 Erion Luga	Dr	6 Enkela Afimadhi	Msc (PhD cand)	N/A
7 Artan Hysa	Msc (PhD cand)	7 Teuta Kodra	Msc	Akademia sh.p.k
8 Egin Zeka	Msc (PhD cand)	8 Erilda Sulaj	Msc	ZRPP
9 Desantila Hysa	Msc (PhD cand)			
10 Ina Osmani	Msc (PhD cand)			
11 Artemis Hasa	Msc (PhD cand)			
12 Huseyin Bilgin	Prof.As			

Summary of Staff Qualification and and ratios among them (Table 5)

Table 5

Title/ Degree	Academic staff for the study program					
	academic year 2012 -2013			academic year 2013 - 2014		
	EAS	ASC	Ratio EAS / ASC	EAS	ASC	Ratio EAS / ASC
Professors						
Associate Professors				1	0	1/0
Dr/PhD	2	0	2/0	2	0	2/0
Professor Assistants (Msc)	1	0	1/0			
Administrative Staff	4	0	4/0	4	0	4/0

Title/ Degree	Academic staff for the study program					
	academic year 2014 -2015			academic year 2015 - 2016		
	EAS	ASC	Ratio EAS / ASC	EAS	ASC	Ratio EAS / ASC
Professors						
Associate Professors	1	0	1/0	1		1/0
Dr/PhD	3	0	3/0	1	1	1/1
Professor Assistants (Msc)	3	3	3/3	3	2	3/2
Administrative Staff	4	0	4/0	4		4/0

Handwritten signature

Title/ Degree	Academic staff for the study program					
	academic year 2016 -2017			academic year 2017 - 2018		
	EAS	ASC	Ratio EAS / ASC	EAS	ASC	Ratio EAS / ASC
Professors						
Associate Professors	1	0	1/0	2		1/0
Dr/PhD	2	2	2/2	5	1	5/1
Professor Assistants (Msc)	3	3	3/3	5	7	5/7
Administrative Staff	4	0	4/0	4		4/0

Handwritten signature

Data by Age of staff (Table 6)

Table 6

Title/ Degree	For the academic year 2017 - 2018											
	Number of EAS and ASC with age:											
	(25-35)		(36-45)		(46-55)		(56-65)		(66-68)		Over 68	
	EAS	ASC	EAS	ASC	EAS	ASC	EAS	ASC	EAS	ASC	EAS	ASC
Professors												
Associate Professors			2									
Dr/PhD	2		3	1								
PhD in process	5	3										
Professor Assistants (Msc)		2		1								1
Administrative Staff	4											

Faculty facilities (Table 7)

Facilities for staff:	Number	Square (m ²)
Office for Dean / Vice Dean	5	285
Office for the Administrator	1	26
Office for departments coordinator	2	61
Office for departments/ research centers	12	328
Office for Academic Staff	40	620
Office for finance	2	37
Office for IQAU	1	50
Meeting rooms	2	75
WC for staff	35	212
Premises for servise personel	11	
Total		1694
Classrooms (lectures)	5	752
Classrooms (seminars)	17	1545
Premises for promocion activities	1	128
Classrooms (profesional practice)	2	258
Laboratories for courses	3	233
informatics laboratories	2	175
Internet room	2	152
Library hall	1	322
Student information office	2	71
Office for photocopying, bookshop etc	1	85
Corridors/hall	25	2707
Sports premises	5	463
Premises for thierd parties	1	56
Recreation premises such as cafeteria /fast fond/restaurant	1	337
Premises for the activities of the Student Council	1	30
WC for students	54	327
Total		9335
Normatives m² / per person		23.7

Handwritten signature

Table 7/1, Number of PC, printers, projectors, videoprojectors, scanners

Number of PC per doctoral students	120
Number of PC furnished labs per students	4
Number of PC for academic staff	87
Number of PC for administration	53
Number of printers for each one	15
Number of photocopying machines for each one	15
Number of head projectors	1
Number of video projectors	27
Number of scanners	10

Angela

Income and various financing of University EPOKA, data over the six years , in ALL (Table 8)

Table 8

RESOURCES FROM:	2012-2013	2013-2014	2014-2015	2015-2016	2016-2017	2017-2018
PUBLIC FUNDS:						
Central government/ Local government						
NON-PUBLIC FUNDS:						
Grants on research and contracts				5.825.533	6.329.204	31.808.666
Consultations, services						
Tuition and ther student fees	217.589.330	225.594.600	267.196.734	314.762.455	347.599.756	405.492.395
Sponsorships						
Training services (life-long qualifications)						
Donations, assurance activities, foundations etc.						
Commercial activities (cafeterias, fast-food, residential quarters)				1.237.299	1.330.000	1.330.000
Total	217.589.330	225.594.600	267.196.734	321.825.287	355.258.960	438.624.061

Expenditure of EPOKA University (in the past 6 years), in ALL (Table 8/1)

[Signature]

	2012-2013			2013-2014			2014-2015			2015-2016			2016-2017			2017-2018		
	salaries	expenditure	investment	salaries	expenditure	investment	salaries	expenditure	investment	salaries	expenditure	investment	salaries	expenditure	investment	salaries	expenditure	investment
Grants on research and contracts		30.856.000			36.229.200			38.224.200		27.986.924			34.140.036				53.200.000	
Tuition and other student fees	93.216.774	79.490.376	72.086.000	100.355.150	80.806.810	72.884.000	105.668	85.194.480	72.884.000	135.797.123	60.309.512	25.930.744	146.687.562	66.433.500	28.523.845	155.610.000	71.221.500	30.590.000
Commercial activities (cafeterias, fast-food, residential quarters)		11.970.000			12.768.000			13.965.000		5.478.004			6.025.831				6.626.867	
Total	93.216.774	122.316.376	72.086.000	100.355.150	129.804.010	72.884.000	105.668	137.383.680	72.884.000	135.797.123	93.855.440	25.930.744	146.687.562	106.599.367	28.523.845	155.610.000	131.048.367	30.590.000

Incoming and various financing of Second Cycle study program in Architecture, during the last six years (Table 9)

Table 9

RESOURCES FROM:	2012-2013	2013-2014	2014-2015	2015-2016	2016-2017	2017-2018
Tuition and other student fees	2.872.800	7.182.000	11.491.200	10.054.800	3.351.600	2.394.000
Total	2.872.800	7.182.000	11.491.200	10.054.800	3.351.600	2.394.000

Expenditure of Second Cycle study program in Architecture (in the past 6 years), in ALL (Table 9/1)

Costs	2012-2013			2013-2014			2014-2015			2015-2016			2016-2017			2017-2018		
	salaries	expenditure	investment	salaries	expenditure	investment	salaries	expenditure	investment	salaries	expenditure	investment	salaries	expenditure	investment	salaries	expenditure	investment
Tuition and other student fees	718.200	555.427	437.769	1.795.500	1.290.094	1.004.835	2.872.800	2.226.218	1.636.311	2.513.700	980.858	388.961	837.900	323.067	127.176	598.500	240.273	94.414
Total	718.200	555.427	437.769	1.795.500	1.290.094	1.004.835	2.872.800	2.226.218	1.636.311	2.513.700	980.858	388.961	837.900	323.067	127.176	598.500	240.273	94.414

Database for members of IQAU (Table 10)

Table 10

Handwritten signature

	Members of IQAU	Position in IQAU	How long has this task
1	Prof. Dr. Teoman Duman	Chair	Dec 2017-current
2	Dr. Timothy Hagen	Member	Dec 2017-current
3	Dr. Julian Hoxha	Member	Dec 2017-current
4	Dr. Alba Kruja	Member	Dec 2017-current
5	Dr. Odeta Manahasa	Member	Dec 2017-current
6	Dr. Reina Shehi	Member	Dec 2017-current
7	Mr. Altin Bora	Member	Dec 2017-current
8	Mr. Loren Senja	Member	Dec 2017-current
9	Mr. Arjan Shahini	External Member	Dec 2017-current
10	Mr. Idaver Sherifi	Member (Alumni)	Dec 2017-current
11	Ms. Qamile Zdrava	Member (vice president on IQAU, student council)	Dec 2017-current
12	Ms. Flogerta Hasanaaj	IQAU/coordinator	Dec 2017-current

Handwritten signature

The curriculum of the study program for Msc in Architecture (Table 1.1)

Table 1.1

Year I Courses/Modules	Semester	ECTS	Weekly hours	Teaching Hours of student's work						In auditorium	Independent work	Total	Exams
				Lecture		Seminar		Independent work					
				ECTS	In auditorium	ECTS	In auditorium						
1 Summer Practice at Construction Site	1	0	0	0	0	0	0	0	0	-	-	-	
2 Advanced design Studio I	1	12	8	6	64	6	64	86	6	128	172	300	
3 Design Methods or Advanced Structural Systems or Housing Systems	1	6	4	4.5	48	1.5	16	65	22	64	87	150	
4 Elective Course	1	6	3	6	48			102		48	102	150	
5 Elective Course	1	6	3	6	48			102		48	102	150	
6 Advanced Design Studio II	2	12	8	6	64	6	64	86	6	128	172	300	
7 Case Studies in Architecture and Criticism or Sunlight in Architecture or Housing systems	2	6	4	4.5	48	1.5	16	65	22	64	87	150	
8 Elective Course	2	6	3	6	48			102		48	102	150	
9 Elective Course	2	6	3	6	48			102		48	102	150	
Total		60	36	45	416	15	160	710	216	576	924	1500	

[Handwritten signature]

[Handwritten signature]

Year II Courses/Modules (Architectural Design Field)	Semester	ECTS	Weekly hours	Teaching Hours of student's work						Total	Exams		
				Lecture		Seminar		Independent work	In auditorium				
				ECTS	In auditorium	Independent work	ECTS					In auditorium	
1	Supervised Independent Study and Research	1	5	12	80	220				80	220	300	1
2	Special Topics in Architectural Design or Special Topics in Building Technology or Special Topics in Urban Planning and Design	1	4	6	48	102				48	102	150	1
3	Elective Course	1	3	6	48	102				48	102	150	1
4	Elective Course	1	3	6	48	102				48	102	150	1
5	Master Thesis	2	-	-	-	-				-	750	750	
	Total		15	60	224	526				224	1276	1500	4

[Handwritten signature]

[Handwritten signature]

Elective Courses	Semester	ECTS	Weekly hours	Teaching Hours of student's work						In auditorium	Independent work	Total	Exams
				Lecture		Seminar		ECTS	Independent work				
				In auditorium	Independent work	In auditorium	Independent work						
1 Theories of Architectural Design	1	6	3	48	102				48	102	150	2	
2 Thresholds of 20 th Century	1	6	3	48	102				48	102	150	2	
3 Forecasting in Design	1	6	3	48	252				48	252	300	2	
4 Architecture in Context	1	6	3	48	102				48	102	150	2	
5 Design Methods	1	6	3	48	102				48	102	150	1	
6 Evaluation in Architecture	1	6	3	48	102				48	102	150	2	
7 Housing for Low Income Groups	1	6	3	48	102				48	102	150	2	
8 Environmental Aesthetics	1	6	3	48	102				48	102	150	2	
9 Architecture and Technology	1	6	3	48	102				48	102	150	2	
10 Computer Applications in Architecture	1	6	3	48	102				48	102	150	2	
11 Home and Culture Studies	2	6	3	48	102				48	102	150	2	
12 Design with Prefabricated Building Elements	2	6	3	48	102				48	102	150	1	
13 Architecture and Utopia	2	6	3	48	102				48	102	150	1	
14 Methods and Techniques in Housing Research	2	6	3	48	102				48	102	150	1	
15 Housing and Change	2	6	3	48	102				48	102	150	1	
16 Geometry in Architecture	2	6	3	48	102				48	102	150	1	
17 Architecture and Identity	1	6	3	48	102				48	102	150	2	

[Handwritten signature]

[Handwritten signature]

Curriculum distributed according to Formation Activities (A-F) (Table 12)

Table 12

Curriculum of Msc program in Architecture			
Type of Activity (A-F)	Course/Module	Credits	Total
Activities in general formation disciplines (A)	Design Methods	6	12
	Case Studies in Architectural Criticism	6	
Activities in characterizing disciplines (B)	Advanced Design Studio I	12	42
	Advanced Design Studio II	12	
	Special Topics in Architectural Design	6	
	Supervised Independent Study and Research	12	
Activities in Elective disciplines (D)	Elective Course 1	6	36
	Elective Course 2	6	
	Elective Course 3	6	
	Elective Course 4	6	
	Elective Course 5	6	
	Elective Course 6	6	
Diploma thesis (F)	Master Thesis	30	30

Handwritten signature

Institution declare: A working grup is dealing with the updating of the curricula according to the Decision of the Council of Ministers No. 41, date 24.01.2018.

Handwritten signature

Changes in the curriculum, compared to licensed programs (Table 13)

Table 13

Year I (Year II) Course/Modules	semester	ECTS	Weekly hours	Teaching Hours of student's work												In auditorium	Independent work	Total	Exams
				Lecture			Seminar			Lab									
				ECTS	In auditorium	Independent work	ECTS	In auditorium	Independent work	ECTS	In auditorium	Independent work							
1	Architectural Design (was) Advanced Design Studio (changed)	1	10	8	4	32	68	6	32	118					64	186	250	0	
2	Innovation in Building Technologies (was) Elective (changed)	1	6	3	6	48	102							48	102	150	1		
3	Qualitative and quantitative research methods in Architecture (Was) Elective (Changed)	1	6	3	6	48	102							48	102	150	1		
4	Architectural Design M 1 Elective	1	6	6	6	48	102							48	102	150	1		
	Changes in Total		2	3	2	32	93	3	60					64	14	50			

[Handwritten signature]

[Handwritten signature]

☑ Curriculum related to respective academic staff (Table 14)

Table 14

Course/Modules	Responsible lecturer/lecturers	Title/degree qualification	Department	Status EAS or ASC	
1 Summer Practice at Construction Site	Artemis Hasa	PhD cand.	Architecture	EAS	
2 Advanced design Studio I	Sokol Dervishi	Assos.Prof.Dr	Architecture	EAS	
	Egin Zeka	PhD cand.		EAS	
	Jurtin Hajro	Msc.		ASC	
3 Design Methods or Advanced Structural Systems or Urban Planning	Odeta Manahasa	Dr	Architecture	EAS	
	Desantila Hysa	PhD cand.	Architecture	EAS	
	Enkeia Alimadhi	PhD cand.	Architecture	ASC	
	Or Huseyin Bilgin	Assos. Prof. Dr	Civil Engineering	EAS	
	Or Anna Yunitsyna	Assit. Prof. Dr	Architecture	EAS	
	Egis Zeka	Msc (PhD cand)	Architecture	EAS	
4 Advanced design Studio II	Sokol Dervishi	Assoc.Prof.Dr	Architecture	EAS	
	Egin Zeka	PhD cand.	Architecture	EAS	
	Jurtin Hajro	Msc.	Architecture	ASC	
5 Case Studies in Architecture and Criticism or Sunlight in Architecture or Housing systems	Edmond Manahasa	Dr.	Architecture	EAS	
	Ernest Shtepani	PhD cand.	Architecture	ASC	
	Or Sokol Dervishi	Or Assoc. Prof. Dr	Architecture	EAS	
	Or Anna Yunitsyna	Assist. Prof.Dr	Architecture	EAS	
	Egin Zeka	Msc (PhD cand)	Architecture	EAS	
6 Supervised Indipended Study and Research	Sokol Dervishi	Assoc. Prof. Dr	Architecture	EAS	
	Anna Yunitsyna	Assist. Prof. Dr	Architecture	EAS	
	Edmond Manahasa	Dr.	Architecture	EAS	
	Odeta Manahasa	Dr.	Architecture	EAS	
7 Special Topics in Architectural Design or Special Topics in Building Technology or Special Topics in Urban Planning and Design	Sokol Dervishi	Assoc. Prof. Dr	Architecture	EAS	
	Anna Yunitsyna	Assist. Prof. Dr	Architecture	EAS	
	Edmond Manahasa	Dr.	Architecture	EAS	
	Odeta Manahasa	Dr.	Architecture	EAS	
	Desantila Hysa	PhD cand.	Architecture	EAS	
	Ina Dervishi	PhD cand.	Architecture	EAS	
	Artan Hysa	PhD cand.	Architecture	EAS	
8 Master Thesis	Sokol Dervishi	Assoc. Prof. Dr	Architecture	EAS	
	Anna Yunitsyna	Assist. Prof. Dr	Architecture	EAS	
	Edmond Manahasa	Dr.	Architecture	EAS	
	Odeta Manahasa	Dr.	Architecture	EAS	
Elective Courses		Responsible lecturer/lecturers	Title/degree qualification	Department	Status EAS or ASC
1 Electives	Sokol Dervishi	Assoc. Prof. Dr	Architecture	EAS	
	Anna Yunitsyna	Assist. Prof. Dr	Architecture	EAS	
	Edmond Manahasa	Dr	Architecture	EAS	
	Niuton Mulleti	Dr	Department of Political	EAS	

Course/Modules	Responsible lecturer/lecturers	Title/degree qualification	Department	Status EAS or ASC
			Science and International Relations	
	Albana Hafili	Dr	Computer Engineering	ASC
	Odeta Marahasa	Dr	Architecture	EAS
	Erion Luga	Dr	Civil Engineering	EAS
	Ina Osmani (Dervishj)	PhD cand	Architecture	EAS
	Teuta Kodra	Msc	Architecture	ASC
	Ernest Shtepani	PhD cand	Architecture	ASC
	Erilda Sulaj	Msc	Architecture	ASC
	Piro Vaso	Msc	Architecture	ASC
	Dcsantila Hyasa	PhD cand	Architecture	EAS

Handwritten signature

- Load in hours for forms of teaching (Table 15)

Table 15

Study program: Msc in Architecture		
Forms of teaching		Total Hours in the auditorium
a.	Lectures	640
b.	Seminars	160
c.	Professional Practice	-
d.	Exams	12
In total		812

- Forms of control of Knowledge (Table 16)

Table 16

Forms of control	Percentage in the overall assessment of the student
a. Attendance and active participation	10%
b. Fulfilment of obligation (lab, course assignments)	30-50%
c. Tests throughout the semester	0-20%
d. Final exam	30-60%
In total	100%

- Grade awarding system (Table 17)

Table 17

Grade awarding system				
Letter Grade	GPA Value	Points	Albanian Grade System	Description
AA	4.00	90-100	10	EXCELLENT
BA	3.50	85-89	9	EXCELLENT
BB	3.00	80-84	8	SUCCESS
CB	2.50	75-79	8	SUCCESS
CC	2.00	70-74	7	SUCCESS
DC	1.50	65-69	6	ON PROBATION
DD	1.00	60-64	5	ON PROBATION
FD	0.50	50-59	4	FAIL
FF	0.00	00-49	0	FAIL
NA	0.00	00-00	0	FAIL

Handwritten signature

- Engagement of students in the components of the activity of the unit (Table 18)

Table 18

Scientific activity of the HEI	Number of engaged students
In individual scientific papers of lecturers	3
In scientific projects at the Department-level	5
In scientific projects at the Faculty-level	50
In scientific projects in collaboration with others	5

- Quality of enrolled and graduated students (Table 19)

Table 19

Study Program Msc in Architecture	Students enrolled in the first year (for the first time) (a)	Entrance CGPA	Transferred Students during years		Transferred (b)	Total
			Year I	Year II		
2011-2012	0	-				0
2012-2013	4	3.52/4		2	2	6
2013-2014	8	2.93/4		1	1	9
2014-2015	14	2.52/4		1	1	15
2015-2016	5	2.71/4		1	1	6
2016-2017	1	2.0/4				1
2017-2018	4	3.22/4				4

- Data of the employment of graduate students (Table 20)

Table 20

Study Program Msc in Architecture	Total number of graduate students	Total number of employed students (in accordance with their degree qualification)	Total number of employed students (not in accordance with their degree qualification)
Academic year 12-13	4	4	0
Academic year 13-14	3	3	0
Academic year 14-15	1	1	0
Academic year 15-16	11	10	0
Academic year 16-17	8	7	0

- Data on scientific research (Table 21)

Table 21

Planned activities at the individual and institution-level for the last five years		
1.	Number of publications by full-time academic personnel of the HEI	436
2.	Number of acquired research projects	
	• Internal Research Projects	10
	• Research Projects of PHD STUDENTS	5
	• External Projects	12
3.	Number of implemented projects	27
4.	Number of scientific activities organized by the HEI	26
5.	Number of participants in scientific activities within the HEI	968
6.	Number of activities connecting scientific research with the teaching process	-
7.	Number of students involved in scientific research	219
8.	Number of National Awards	3

- Data on national and international cooperation (Table 22)

Table 22

Scientific activities at the individual and institution-level in the framework of international cooperation during the last five years		
1	Number of participants as partners in national or international projects	27

2	Number of lectures and seminars with foreign lecturers	36
3	Number of participants in trainings abroad in the area of scientific research	0
4	Mobility of students towards and from the HEI	Toward HEI: 2 From HEI: 22
5	Infrastructure in service to scientific research	<ol style="list-style-type: none"> 1. The available literature in the Epoka Library is contemporary, enriched and provided access to all researchers. 2. Online library, Epoka was granted full membership at JSTOR. 3. There are sufficient labs, classrooms, offices, studios and other facilities with electronic equipment and information technology (CE LAB, CEN LAB, ECE LAB) 4. Computers located in the laboratories contain all the necessary software, programs and packages needed in specific social sciences researches such as: Windows, MS Office, Adobe Reader, SPSS, E-Views 9, STATA etc. 5. Qualified environment. 6. Financial Support on travel and other accommodations for participation in person in scientific activities. 7. Publication based type financial support
6	Number of participants in scientific activities and presentations outside the HEI/abroad	14
7	Number of International Awards in the area of scientific research.	4

Signature

- Communication and cooperation with other state institutions, professional organizations, business community, labor market and other social actors important for higher education (Table 23)

Table 23

Cooperating Institutions and Organizations		
State Institutions		Lloji i bashkëpunimit
1	"Luigj Gurakuqi" University of Shkodra	MoU
2	"Aleksandër Moisiu" University of Durres	MoU
3	California University in Pennsylvania	MoU
4	Nicolaus Copernicus University	MoU
5	"Hëna e Plotë" (Bedër) University	MoU
6	Zaman/Kambohia University	MoU
7	University of Salerno	MoU
8	Cassino and Southern Lazio University	MoU
9	American University in the Emirates	MoU
10	Sapienza University of Rome	MoU
11	State University of Baku -Azerbaijan	MoU
12	International Black Sea University	Cooperation Protocol
13	Ku Bolashak University	MoU
14	Qafqaz University	MoU
15	Rinvest College	MoU
16	Polis University	MoU
17	Marin Barleti University, SHLÛJ	MoU
18	University of Benedictine	MoU
19	University of Applied Sciences - Fachhochschule MainzGermany	MoU
20	Illinois Institute of Technology - USA	Agreement for academic exchange
21	International University of Atatürk Alatau- Bishkek/ Kyrgyzstan	MoU
22	International Balkan University Skopje/Macedonia	Cooperation agreement and MoU
23	Burch International University - Sarajevo / BosniaHerzegovina	MoU
24	Leeds Metropolitan University - UK	Partnership
25	Sam Houston State University -Texas/ USA	MoU
26	Lumina University of South East Europe - Bucharest/ Romania	MoU
27	Texas Pavement Preservation Center (University of Texas in Austin/ Arch&Eng faculty Austin) - Texas/USA	Cooperation agreement
28	Polytechnic University of Bari /Fac. of Architecture & Engineering-	MoU

Signature

Bari/ Italy		
29	University of Pristina/ Fac. of Architecture & Engineering - Pristina/ Kosovo	MoU
30	American University in Bulgaria- Bulgaria	Study abroad Agreement
31	Tallinn University of Technology	MoU
32	Tirana University	MoU
33	Business School EADA	Partnership
34	TED University, Turkey	MoU
35	Istanbul Technical University, Turkey	MoU
36	Yildiz Technical University, Turkey	MoU
37	Gediz University, Turkey	MoU
38	Istanbul University, Turkey	MoU
39	The International University of Logistics and Transport, Wroclaw, Poland	Erasmus+
40	Polytechnic University of Bari, Italy	Erasmus+
41	Universitatea Tehnica "Gheorghe Asachi" din Iasi, Romania	Erasmus+
42	Gdansk University of Technology, Poland	Erasmus+
43	University of Pitesti, Romania	Erasmus+
44	Hochschule Mainz - University of Applied Sciences, Germany	Erasmus+
45	Middle East Technical University, Turkey	Erasmus+
46	Regional Educational Directorate of Korça	Erasmus+
47	Institute of Public Administration for Turkey and the Middle East	MoU
48	British Council Albania	Cooperation
49	Ministry of Social Welfare and Youth	MoU
50	Ministry of Education and Sports	MoU
51	Ministry of Innovation and Public Administration	MoU
52	Ministry of Urban Development and Tourism	MoU
53	Conference of Rectors	MoU
54	National Territorial Planning Agency (AKPT)	MoU
55	Municipality of Tirana	MoU
Professional organizations		
1	CHwB Cultural Heritage without Borders	Cooperation
2	Chamber of Commerce and Industry	MoU
3	CISCO Network Academy	Project
4	Albanian Chamber of International Trade and Development (ACITAD)	MoU
5	Akademia Diplomatike Shqiptare	MoU
6	Albanian Confindustry (KISH)	MoU
7	Albanian Investment Development Agency (AIDA)	MoU
8	INSTAT	MoU
Business community, labor market		
1	Abcom	Summer Practice
2	Agna Group	Summer Practice
3	AK Design Construction	Summer Practice
4	Albania Business Partner	Summer Practice
5	Albania Institute for International Studies	Summer Practice
6	Albstar	Summer Practice
7	Albtelecom & Eagle Mobile	Summer Practice
8	Atlantic Council of Albania	Summer Practice
9	Banka Kombetare Tregtare	Summer Practice
10	Banka Qendrore e Shqipërisë	Summer Practice
11	Bashkia Shkodër	Summer Practice
12	Coca-Cola	Summer Practice
13	Communication Progress	Summer Practice
14	Credins Bank	Summer Practice
15	Deloitte Albania & Kosova	Summer Practice
16	Dominusoft	Summer Practice
17	Drejtoria e Tatimeve Shkodër	Summer Practice
18	Ernst & Young	Summer Practice
19	Gener 2	Summer Practice
20	Gjergji Kompjuter	Summer Practice
21	Intesa Sanpaolo Bank	Summer Practice
22	Kontakt Shpk	Summer Practice
23	Marketing & Distribution	Summer Practice
24	NBG Bank	Summer Practice
25	NOA	Summer Practice
26	Procredit Bank	Summer Practice
27	Raiffeisen Bank	Summer Practice
28	Sigal	Summer Practice
29	Sigma	Summer Practice
30	Sistech Albania	Summer Practice
31	Société General Albania Bank	Summer Practice
32	TBI Consulting	Summer Practice
33	Teikom Albania	Summer Practice
34	Tirana Business Park	Summer Practice

Agush

[Signature]

35	Univers Reklama	Summer Practice
36	Vodafone Albania	Summer Practice
37	Balkatek	Summer Practice
38	UNIVERS-ALB	Summer Practice
39	ProCredit Bank	MoU
40	Raiffeisen Bank	MoU
41	TEB Bank	MoU
42	Plus Communication Sh.a	MoU
43	Communication Progress	MoU
44	DM Consulting Services	MoU
45	Everest IE	MoU

Agjendë

[Signature]